



Yours, for life.®



**THE  
ADVENTURE  
AWAITS**

SUMMER 2021





# FAMILY FORGED, PEOPLE POWERED

This statement represents both a commitment to our future but also a strong sense of who we are as a brand. In 1987, my father, Les de Asis, started Benchmade in a small garage and never looked back. He knew that it was his calling and mine. Together he taught me the trade, the craft and as I grew, the business did as well.

Now after nearly 40 years we can proudly say Benchmade has always focused our product on exceptional quality, never cutting corners and always innovating. We push the limit where others say it can't be done and we stay true to who we were, are, and always will be - Made in the USA.

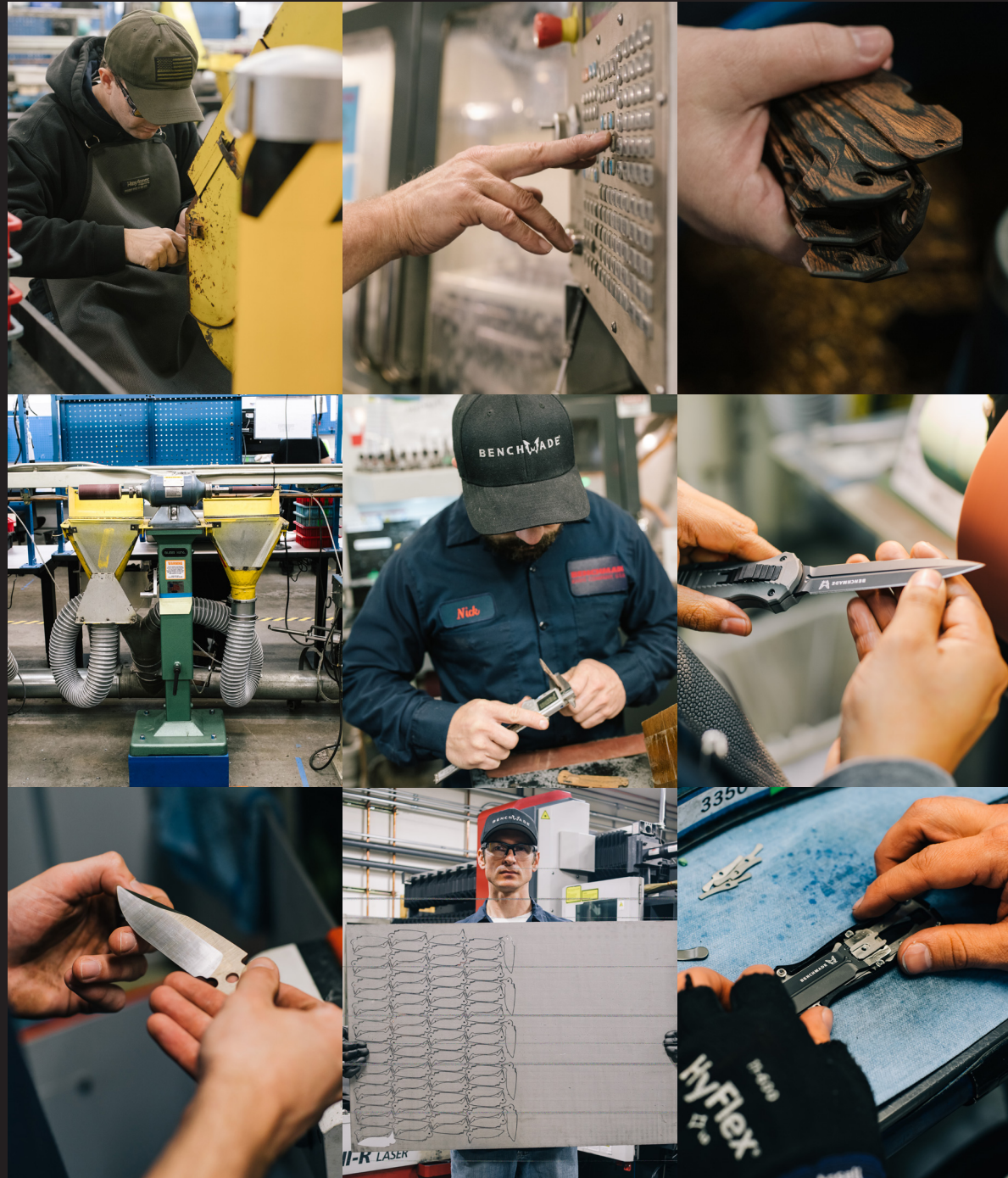
These commitments don't come easy. We are challenged every day to maintain the level of quality and service that makes a Benchmade, a Benchmade. From our LifeSharp guarantee to our revolutionary SelectEdge<sup>®</sup> technology, we never settle for the status quo because we know that it is you, our customer, that proves everyday that when you need it done right, you put your trust in Benchmade.

Today, we proudly stand by the same values that drove us from the beginning. Make it solid. Make it happen.

Sincerely,  
**Jon de Asis** - President & CEO







## COURAGEOUS INNOVATION

We pair technology with time-tested craftsmanship to create artifacts worthy of being passed down to the next generation. That's part of our American heritage - the value in making objects worth holding onto.



# GUARANTEED FOR LIFE



When we say a Benchmade is yours, for life we mean it. We will re-sharpen your Benchmade back to a factory edge, anytime you need. Learn more at [benchmade.com/lifesharp-service](https://www.benchmade.com/lifesharp-service).



OREGON BUILT

# BENCHMADE'S HISTORY

Forged from a rich history dating back 40 years, Benchmade is the craftsmanship of many dedicated employees, an unyielding demand for excellence, and the de Asis family's visionary commitment to culture, service and innovation. This is the story of Benchmade.

## BALI-SONG® INC IS BORN

Like many American dreams, Benchmade grew from humble beginnings... Thus, from a small shop rented in a second story mezzanine in California, founder, Les de Asis, incorporated his company as Bali-Song®, Inc. Les actually purchased the original equipment from the owner of a manufacturing operation who was looking to retire. Utilizing the rudimentary technology available to him at the time, he began building handmade custom Bali-Songs (a popular type of butterfly knife originating in the Philippines) with partner, Jody Samson, who ground all of the blades. The massive success of these custom Balis spurred the creation of the first production Bali-Song®: The model 68.

Over the next eight years, the company expanded its notoriously superior product offerings into fixed blades and conventional folding knives, evolving its name from Bali-Song®, Inc. to Pacific Cutlery Corp.

## BENCHMADE SETS ROOTS IN OREGON

Making the move from California to a facility in Clackamas, Oregon, Benchmade finally began producing knives there under the name Benchmade, Inc. This was a major turning point, as the company was now located in the American epicenter of knife manufacturing. With a plethora of technological advancements now possible, Benchmade became the first company to own and employ a high-power laser cutter. A laser cutter, for example, allowed for work with steels previously too hard to stamp. Benchmade also became the world leader in automatic knife manufacturing (and still is, to this day) and also began to supply military units.

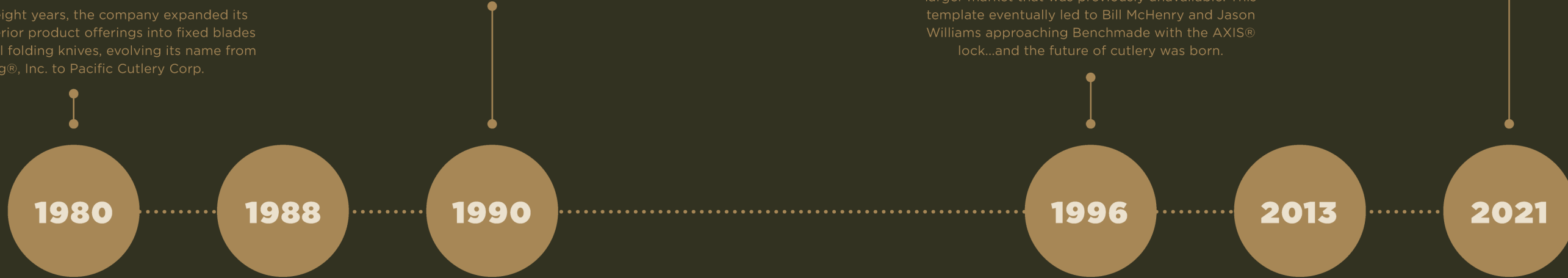
## BENCHMADE MOVES TO OREGON CITY

Responding to an enthusiastic, growing customer demand, Benchmade moved from the 15,000 sq. ft. shop in Clackamas to its current location in Oregon City, Oregon which sprawls approximately 144,000 sq. ft. today.

With its first ten years of manufacturing experience behind them, and by working with world-class custom knife makers like Mel Pardue and Warren Osborne, Benchmade perfected a business model that involved lending manufacturing processes to custom knife designs; affording a level of innovation and quality to the larger market that was previously unavailable. This template eventually led to Bill McHenry and Jason Williams approaching Benchmade with the AXIS® lock...and the future of cutlery was born.

## FAMILY FORGED PEOPLE POWERED

Now more than ever, we continue our momentum with great passion and enthusiasm. We're at a critical point in our business as the industry continues to grow, forcing us to really focus our efforts on the recipe that got us to where we are today. There are inevitable challenges associated with growth, but we are confident in our ability to learn from time's lessons and continually forge ourselves to be better.



## A NEW NAME, BENCHMADE

By 1988, Les reintroduced a new company and new version of the Model 68; this time with a vision to produce in the US, with an even stronger commitment to product availability, quality and customer relationships. He knew the company needed a new name. While phrases like "handmade" and "factory-made" aptly described the knives, it was "Benchmade" that truly expressed the quality of Les' product. He was building an operation that made precision parts, but with legendary American hand-assembly on the finished products. Indeed, it was a "bench" operation and Les wanted the name to reflect this marriage of manufactured—with custom. The sentiment still describes Benchmade's position in the market, to this day.

## FOCUS ON ETHICS & OPERATIONS

To this day, the proudly American-bred Benchmade brand continues to focus on innovation, customer needs, responsible business ethics and operations to bring the highest quality products to the world's elite.



# HOW TO CHOOSE YOUR BENCHMADE KNIFE

THE BENCHMADE DIFFERENCE



SCAN HERE



TO FIND THE BEST KNIFE FOR YOU, TAKE OUR QUIZ.



## TACTICAL

Designed for hard, immediate use, these high-strength knives feature robust mechanisms for situations where performance is a must.



## RESCUE

For critical situations. Gloved hands and the need to cut pliable materials are considerations in the design of these knives.



## HUNT

Knives are a critical component of a successful hunt. These are the most advanced hunting knives ever made.



## EVERYDAY CARRY

Not obtrusive or uncomfortable in slacks or shorts; just convenient and well fitted to your general needs.



## OUTDOOR

From water to woods, backpacking trips to car camping, kayaking to fly-fishing, these versatile cutting tools can be used for many tasks.



## SURVIVAL

Things can happen unexpectedly for any adventurer. These knives have been built for the unexpected.

## MECHANISM

*We offer five primary actions:*

manual-opening, assisted-opening, automatic opening, fixed blade and Bali-Song®. If you're a mountain climber, you may want an assist. If you're a sportsman, a fixed blade may be the right choice. Whatever the case, consider which mechanism type is optimal for your needs. Mechanisms like the AXIS® lock deliver manual opening, assisted opening and automatic opening. Others, like the monolock, deliver only manual opening.



### OPENING MANUAL

"Manuals" must be opened 100%, from the closed position to the open position, by the user.



### ASSISTED OPENING

"Assists" have a spring that encourages the blade into the open position once the user pushes the blade manually beyond a certain point.



### AUTOMATIC OPENING

"Autos" have a button or other actuation switch that mechanically fires the blade open without the user directly manipulating the blade.



### FIXED BLADE

These knives are permanently open and almost always come with a sheath to protect the edge.



### BALI SONG

"Balis" or "butterfly knives" open and close by way of two handles that rotate around the front and back of the blade.

## BLADE STYLES



DROP-POINT

Drops off the spine to the top. Tip height is typically below the center line on the blade.



CLIP-POINT

Blade contains a sharp beak, typically forward of the midpoint, as if the tip has been "clipped off."



TANTO

This shape is easily identified by the angular lines. The knife edge is flat and transitions with a hard break in the angle from the tip to the primary edge.



REVERSE TANTO

Defined by the bevel creating an upside-down tanto profile, adding weight forward on the blade.



OPPOSING BEVEL

Non-uniform blade geometry that creates an offset pry-tip, while maintaining a consistent chisel grind on the cutting edge.



SPEAR-POINT

Must be symmetrical considering the blade profile. \*Traditionally, spear-points are double-sided.



WEEHAWK

Characterized by a sweeping edge and spine radius that tapers to the tip and handle.



SHEEPSFOOT

The spine of the blade "rolls" into the tip earlier. This blade has a completely straight edge.



TRAILING END

The spine curves upward to create an elevated point that's typically higher than the handle.

SCAN HERE



TO LEARN MORE ABOUT MATERIALS AND MECHANISMS



# EVERYDAY CARRY YOU CAN RELY ON

+  
Blade Steel: CPM-M4  
(62-64 HRC)

+  
Blade Style:  
Tanto

+  
Clip Type: Mini  
Deep-Carry

+  
Clip Position:  
Reversible



6061-T6 ALUMINUM  
HANDLE MATERIAL

0.42INCH  
10.41CM  
HANDLE  
THICKNESS

**537GY-1 | \$260**

For those looking for something a little more robust, the new 537GY-1 Bailout takes lightweight strength one step further. Outfitted with woodland green anodized aluminum handles, and a CPM-M4 blade, this Bailout can hang with the best of them despite its slim profile.

THE ONE AND ONLY

## BAILOUT®

The Bailout is an outdoor classic. This professional class powerhouse delivers a look that is totally Benchmade. The aluminum handle gives a feel that you have to experience while the AXIS lock confirms that signature Benchmade action. Built for any adventure and durable enough to dig into any trouble you might find yourself in, this knife comes ready for action.

Customer Review: ★★★★★

“Wow!!!

The 537GY-1 Bailout is in a different class entirely! The blade material is fantastic and I am sure it is more durable than anything that could be thrown at it. The handles are truly excellent with a grippy texture and have a great color, I love that even though it is slim, it exudes hard use. This is my favorite Benchmade made so far.

— @CAVALRYDAVE



TACTICAL



RESCUE



EDC

3.38INCH  
8.59CM  
BLADE  
LENGTH



GLASS  
BREAKER



# GRIPTILIAN

551BKOD-S30V

**\$150**

When it comes to all-around functionality, you can't beat the Griptilian®. The 551BKOD-S30V Griptilian is a black ceratone drop-point blade with a OD Green Nylon handle. The blade stands at 3.45" in length and is used for everyday, outdoor, or tactical situations. Made in USA.



EDC



OUTDOOR



TACTICAL

## CSTM.

The Griptilian is available to be customized. See page 38 for more detail.



**LifeSharp**  
GUARANTEE



# PRECISION MADE TO HANDLE ANY CONDITIONS.







# OFF ROAD RELIABILITY

Yours, for life.®

# FIXED ADAMAS

The all-new 375-1 is stronger than ever



A new era of Adamas® is here. Re-engineered to be stronger than ever before, this blade brings corrosion resistance and toughness front and center.

CARRY  
WITH  
CONFIDENCE





# VANCE COLLVER

Self-Proclaimed Knife Geek

## A BEHIND THE SCENES LOOK AT PRODUCT MANAGEMENT WITH VANCE COLLVER

When Vance Collver, Senior Product Line Manager at Benchmade Knife Company talks knives, his eyes literally light up. Suddenly, he becomes animated. Totally in his element. See, Vance isn't just a knife enthusiast, he playfully corrects me: he's a knife geek. And perhaps it's precisely that kind of passion that's made him perfect for the Director of Product Line Management role at Benchmade, a truly iconic American-made knife company with a history dating back 40 years.

His path to the position there was unconventional, but Collver certainly earned his stripes. "I joke that I left a lucrative career at Round Table Pizza, took a dollar an hour pay-cut, and started at the ground floor," says Collver.

**“***When Vance Collver, Director of Product Line Management at Benchmade Knife Company talks knives, his eyes literally light up.*

Vance had never even taken a shop class in high school, but always loved knives, particularly butterfly knives. He carried one and used it in the pizza joint to open boxes more efficiently. At Benchmade, he

started in the Finishing Department and grew from there. Eventually, he became a lead in the shop and then supervisor. He got into process development, then manufacturing and by 2004 got promoted to one of the first PLMs that Benchmade had. Another much-anticipated release that Collver's particularly excited about comes from Benchmade's popular Adamas family: the 2750SFE-2 Auto Adamas. "It's just a new feel to a really classic family of knives that appeals to military."



**AUTO ADAMAS | 2750SFE-2 | \$360**


"For example, we had one guy send us back a knife that was pretty destroyed. He was in the military on duty, a gunner in a Humvee and was carrying it on the side of his plate carrier. They went into an ambush and he took an AK round to the side of his plate carrier, which didn't have any plates at the time. What happened? His Benchmade clipped to his side took the round and saved his life. He sent it back and it was all bent up. We replaced it for free, of course. And, that's the kind of stuff that keeps me passionate."



ADAMAS FAMILY

**BUILT STRONG BUILT TOUGH**

  
1218 IN-LBS  
SIDE LOAD BEND  
STRENGTH

  
558 IN-LBS  
TIP BREAK STRENGTH.  
15% STRONGER THAN  
ITS PREDECESSOR



**NEW | FIXED ADAMAS®**  
375FE-1 | \$250

The last thing your loadout needs is another heavy piece of gear to weigh you down, which is why the 375FE-1 Adamas® has been re-engineered to be stronger than ever before. Machined from CPM-CruWear®, this Flat Earth blade brings upgraded corrosion resistance and toughness front and center.



3.82" | 9.70cm  
BLADE LENGTH

8.93" | 22.68cm  
OPEN LENGTH



**NEW | ADAMAS®**  
275FE-2 | \$280

Reliability done right. The new 275FE-2 Adamas® tactical folding knife brings in-hand comfort to the forefront with a tank-like construction you can trust your life with. Carefully redesigned to lighten your load, while continuing to deliver unrivaled performance throughout hard-use applications; the toughest just got tougher.



3.25" | 8.26cm  
BLADE LENGTH

7.62" | 19.35cm  
OPEN LENGTH



**NEW | MINI ADAMAS®**  
273GY-1 | \$250

273 Mini Adamas® is a stout tactical folder that upholds the tradition of rugged reliability set forth by its full-sized predecessors. Despite its trimmed build, the Mini Adamas® is tough as nails with the introduction of CPM-CruWear®, and a refreshing update to color configurations. This Adamas® is as mighty as mini gets.







*Table Knife*

# American Made Cutlery Designed For Adventure.



*Who's Hungry?*

**Yours,  
for life.®**





# Introducing... The Table Knife

STARTING AT: \$500

**BRING THE ADVENTURE HOME. OUR VERSATILE TABLE KNIFE DELIVERS PRECISION FROM YOUR KITCHEN TO YOUR GRILL AND ONTO THE TABLE.**

We're passionate and committed to innovation and performance with only one goal in mind - making knives yours, for life. Since 1987, Benchmade has been a thriving, world-class knife manufacturer setting a standard of excellence. American-made and family owned, we're proud to introduce a new line of American cutlery for the kitchen.

Our Table Knife redefines cutlery with innovative technology combined with hand craftsmanship and American-made quality. Benchmade's proprietary SelectEdge™ technology delivers the finest edge that's smoother and sharper, designed to improve cutting performance with precision at every meal.



Scan here to customize your cutlery set to match your kitchens personality.



CARBON FIBER

BLUE CANYON RICHLITE

IVORY G10

REDSTONE RICHLITE

MAPLE VALLEY RICHLITE

BLUE G10

BLACK G10





DANIELLE PREWETT'S  
**PHEASANT CUTLET WITH  
MORELS AND ASPARAGUS**

**MEATEATER**

Danielle Prewett is the founder of Wild + Whole and a wild foods contributing editor for MeatEater. Texas is home for Danielle, but her love for the outdoors developed while chasing birds across the grasslands of North Dakota. She has been living off the land for the last several years and is fascinated by the richness of wild game. Danielle strives to portray this beauty by teaching others how to cook and enjoy their harvest.

- 4 pheasant breasts
- 1 cup all purpose flour
- 2 eggs, beaten
- 1/2 cup panko breadcrumbs
- 2 tsp. smoked paprika
- 4 tbsp. butter, divided
- 1 handful of morels
- 1 bundle of asparagus
- 2 cloves of garlic, minced
- 2 tbsp. lemon juice
- 2 tbsp. chopped parsley
- Sea salt and black pepper
- Cooking oil
- Shaved parmesan and chives to garnish

**METHOD**

Prep the morels by washing clean, patting dry, and slicing into ¼-inch rings, or in half. Aim to have about a cup's worth. Slice the asparagus into ¼-inch pieces at a 45 degree angle, but leave the tips whole.

Pound the pheasant breasts flat with a meat mallet until you reach an even thickness. Season generously with salt and pepper. Spread flour across one plate, beat eggs in a bowl, and spread panko breadcrumbs across another plate. Dredge the pheasant in the flour and shake off the excess. Dip them in the egg wash, then coat in breadcrumbs.

When ready to cook, heat a large frying pan over medium-high heat. Add enough oil to coat the bottom of the pan in a thin layer. Once the oil is hot, lay each breast down, leaving room in between each. Fry for 2-3 minutes, or until golden brown, then flip and cook for another 2-3 minutes on the other side. Work in batches as needed.

Pour all of the oil out of the pan except for one tablespoon. Add the morels and toss to coat. Leave them alone to brown for a minute on one side, stir, and drop in one tablespoon of butter. Cook for another couple of minutes, then add the garlic and a pinch of salt. Once the garlic is fragrant, add asparagus and toss to mix. Pour in the fresh lemon juice and add the remaining three tablespoons of butter. Stir and cook until the asparagus is tender, but retains a snap. It shouldn't take more than a few minutes. Taste and season with salt and finish with a handful of chopped parsley.

Serve the morels and asparagus with the fried pheasant cutlets. Garnish with chives and shaved parmesan.



@wildandwhole





## CSTM.

Table knives are available to be customized. See page 38 for more detail.



# Nothing Average About It.



## SelectEdge®

Benchmade's proprietary SelectEdge features a precise 14-degree angle, making it our finest and sharpest edge yet.

“

**"Incredible craftsmanship and the sharpest edge I've ever seen."**

- Chef Kyle Mendenhall



Blade Length:  
5.13" | 13.03 cm



Blade Finish:  
Stonewashed Satin



Blade Style:  
Clip Point /  
Forward Serrations



Overall Weight:  
3.19oz | 90.43g



# UNRIVALED PERFORMANCE



SCAN HERE



TO EXPLORE THE REST OF OUR HUNT OFFERING

# HIDDEN CANYON



15017-1 | \$230

Despite its compact profile, this knife provides ample real estate throughout the handle and cutting edge, making it just as effective on big game as it is on smaller species.



15006 | \$130

Designed for the sweet spot of hunter preference; the newly redesigned 15006 Steep Country is a versatile fixed-blade capable of performing throughout any season, on any species.







# MADE IN THE GREAT PACIFIC NORTHWEST

Benchmade continues to be inspired by the area we call home. Built for the outdoors and tested in the toughest conditions, our home helps us continue the tradition of building only the best products, no matter what Mother Nature throws at you.

Crooked River and the Mini Crooked River are two icons of the outdoors that continue to remind us of the power nature as an inspiration.

“

"This is my fourth Benchmade Knife and admittedly my favorite knife ever. I love the look of the wooden handles. I also custom ordered my Crooked River with the 20CV steel blade and couldn't be happier."

- Dennis

★★★★★



## CSTM.

The Crooked River is available to be customized. See page 38 for more detail.



## CROOKED RIVER

A traditional shape combined with modern technology that pushes the preconceived notions of what a hunting knife should be. This modern classic is adventure ready for your hunting or everyday carry needs. Made in USA.

- + Blade Steel: CPM-S30V (58-60 HRC)
- + Blade Style: Clip-point
- + Clip Type: Split Arrow
- + Clip Position: Reversible Tip-Up

**CROOKED RIVER**  
15080-2 | \$260

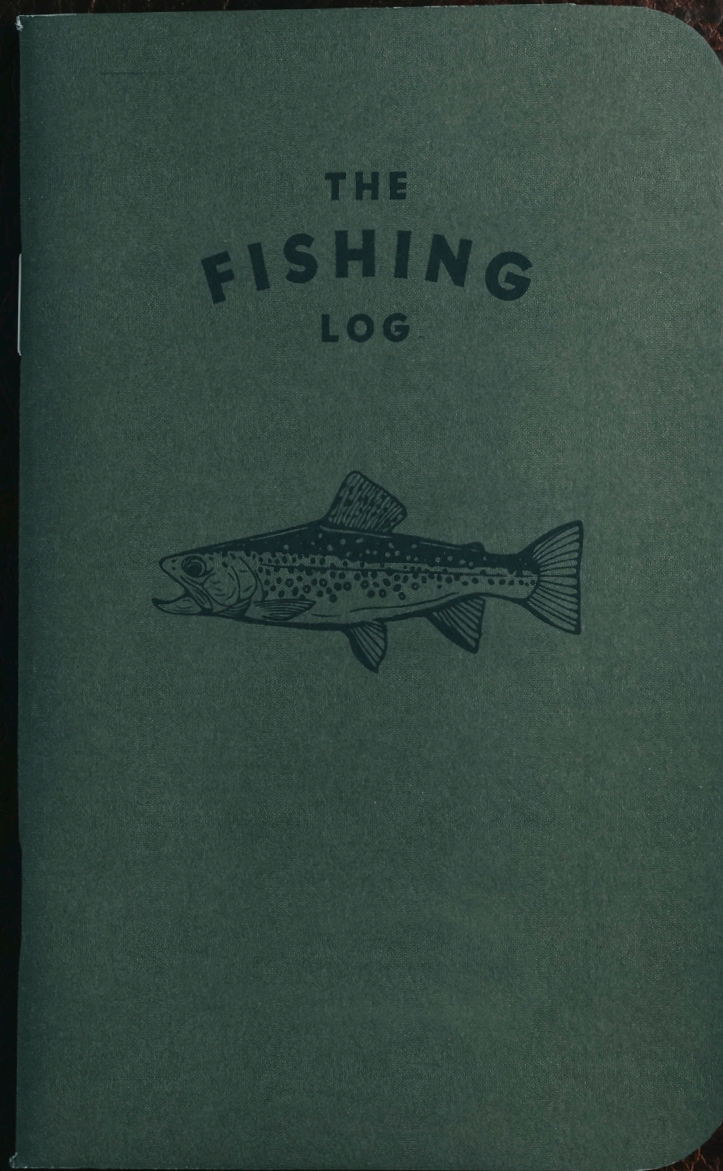
**MINI CROOKED RIVER**  
15085-2 | \$240



**NEW** | INTRODUCING

# THE 945 MINI OSBORNE

**\$205**



EDC



OUTDOOR

## MINI OSBORNE

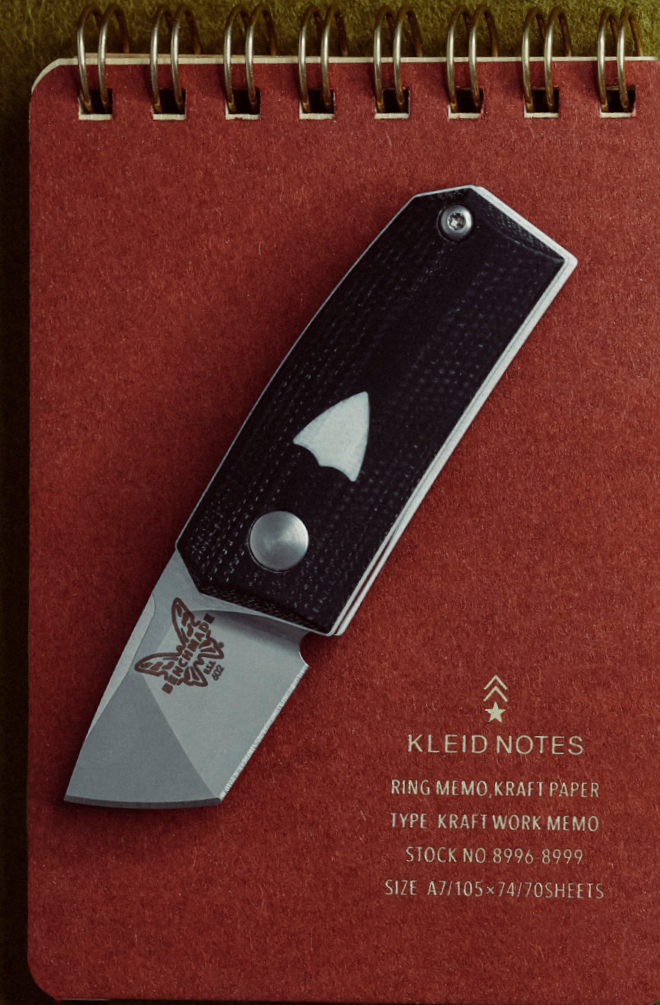
945 | **\$205**

The Osborne family expands to include the long-awaited mini variation. The 945 Mini Osborne upholds the same unique styling of the 940, while scaling down the overall profile. Sporting the classic reverse tanto blade shape in CPM-S30V and green aluminum handles. The perfect accomplice to the full size counterparts.

# A MODERN CLASSIC

**TENGU TOOL**

602 | **\$180**



## TENGU FLIPPER

601 | **\$220**

We're passionate and committed to innovation and performance with only one goal in mind - making knives yours, for life. Since 1987, Benchmade has been a thriving, world-class knife manufacturer setting a standard of excellence.






RAIN OR SHINE

# HIT THE TRAIL WITH YOUR BUGOUT

LOCATION: 49.365040, -123.208191

Designed for the modern outdoor adventurer,  
incorporating the lightest, best performing materials  
in an extremely slim yet ergonomic package.

Yours, for life.® 



BENCHMADE.COM



ONE KNIFE TO RULE THEM ALL

# ELEVATE YOUR



# EVERYDAY CARRY



**GEAR  
JUNKIE**

2020 Gear of the Year, Best Knife



**POPULAR  
MECHANICS**

2021 Gear of the Year, Best Small Pocket Knife & Best Knife in the 2020 Outdoor Awards



**OUTSIDE  
MAGAZINE**

2021 Summer Buyers Guide Pick

## MINI BUGOUT

With a closed length of 3.7", this ultralight folder is small enough for a mint tin, yet big enough for adventure.

The Bugout features Benchmade's AXIS® locking mechanism and classic drop-point blade style.

Customer Review: ★★★★★

“ The 535 Bugout is hands down the best knife anyone can own. It's light, compact, good steel for the blade and just makes for a perfect EDC. I carry the Bugout everywhere I go and basically never leave the house without it.

- BEN



CPM-S30V premium stainless steel (58-60HRC)

Manual AXIS® lock mechanism



EDC



OUTDOOR



Lanyard hole

Textured orange Grivory(R) handle

## FLIP IT — GRIP IT

Versatility and Style - All in one.



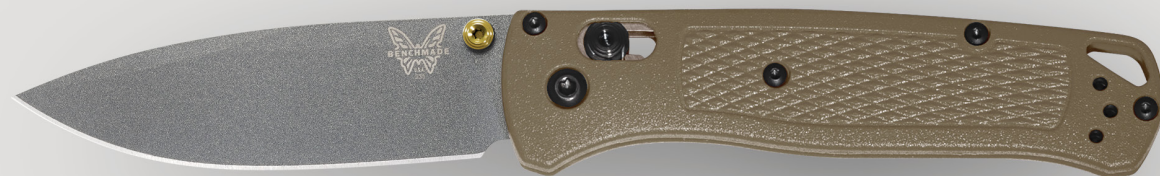
ULTRALIGHT, GO ANYWHERE CARRY

# THE BUGOUT COLLECTION



**535SBK-2 | \$175**

Re-engineered with Benchmade's new CF-Elite™ handle technology, the 535BK-2 weighs in slightly lighter than its predecessors, yet boasts greater rigidity under pressure.



**535GRY-1 | \$175**

Ranger green handles and a smoked gray, chromium nitride coated CPM-S30V premium stainless steel blade blend into nearly any environment.



**535S | \$155**

The original Bugout features a stain CPM-S30V premium stainless steel blade with textured blue Grivory® handles. Weighing in at 1.85 oz. it's a backpackers dream.



**NEW | 535-3 | \$300**

An elite upgrade with a milled carbon fiber handle, premium S90V super steel, and signature blue highlights. This Bugout retains all the crowd-pleasing features you love, while pushing its performance to the next level.



**533BK-1 | \$160**

Featuring a black coated CPM-S30V premium stainless steel blade and textured white Grivory(R) handles, the 533BK-1 Mini Bugout(R) weighs just 1.5 oz.



**533 | \$140**

A classic configuration featuring a satin CPM-S30V premium stainless steel blade and textured orange Grivory(R) handles and weighing just 1.5 oz.



**NEW | 533BK-2 | \$160**

This blacked out 533BK-2 Mini Bugout features a black coated CPM-S30V premium stainless steel blade and textured black CF-Elite™ handles, weighing just 1.5 oz.





# CSTM.

**DESIGNED BY YOU,  
BUILT BY US.**




**SCAN HERE**



TO CUSTOMIZE YOUR  
BUGOUT JUST FOR YOU.

With the new blade steels and handle materials we're up to 497,760 Bugout combination options.

Here at Benchmade we believe that innovation drives creation and our Custom Knife Builder allows you to design your PERFECT personalized everyday carry. Just log on and start building - from upgraded blade steels to custom colors, thumb lugs to liners, there are over 1,000,000 combinations. What will you build today?

Yours, for life.® 

[BENCHMADE.COM](http://BENCHMADE.COM)



# DESIGNED BY YOU

## BUILT BY BENCHMADE

Whatever you're looking for, we've got you covered. With our Custom Knife Builder, you can design a truly unique Benchmade with the materials and finishes you've always wanted. For inspiration, check out popular builds from the community at [benchmade.com/custom-knife-builder](https://www.benchmade.com/custom-knife-builder)



### CROOKED RIVER + MINI CROOKED RIVER

Elevate this modern classic with materials like M4, Damasteel, and carbon fiber.



### GRIPTILIAN + MINI GRIPTILIAN

The possibilities are endless with materials like S90V, M4 and 20CV paired with colorful handle options.



### BARRAGE + MINI BARRAGE

With a variety of blade shapes and colors, it's easy to personalize this EDC favorite.



### MARK HEALEY'S BUGOUT

Featuring a satin S30V serrated blade, steel gray handle scales and black hardware.



### ANDY STUMPF'S BUGOUT

Featuring a black coated S30V serrated blade, crimson handles and a red bordeaux thumbstud.

## CSTM. HOW IT WORKS

- 01** > CHOOSE YOUR KNIFE
- 02** > DESIGN YOUR BLADE
- 03** > DESIGN YOUR HANDLE
- 04** > ADD YOUR TOUCH

BUILD YOURS TODAY.





Yours,  
for life.®

[benchmade.com](http://benchmade.com)