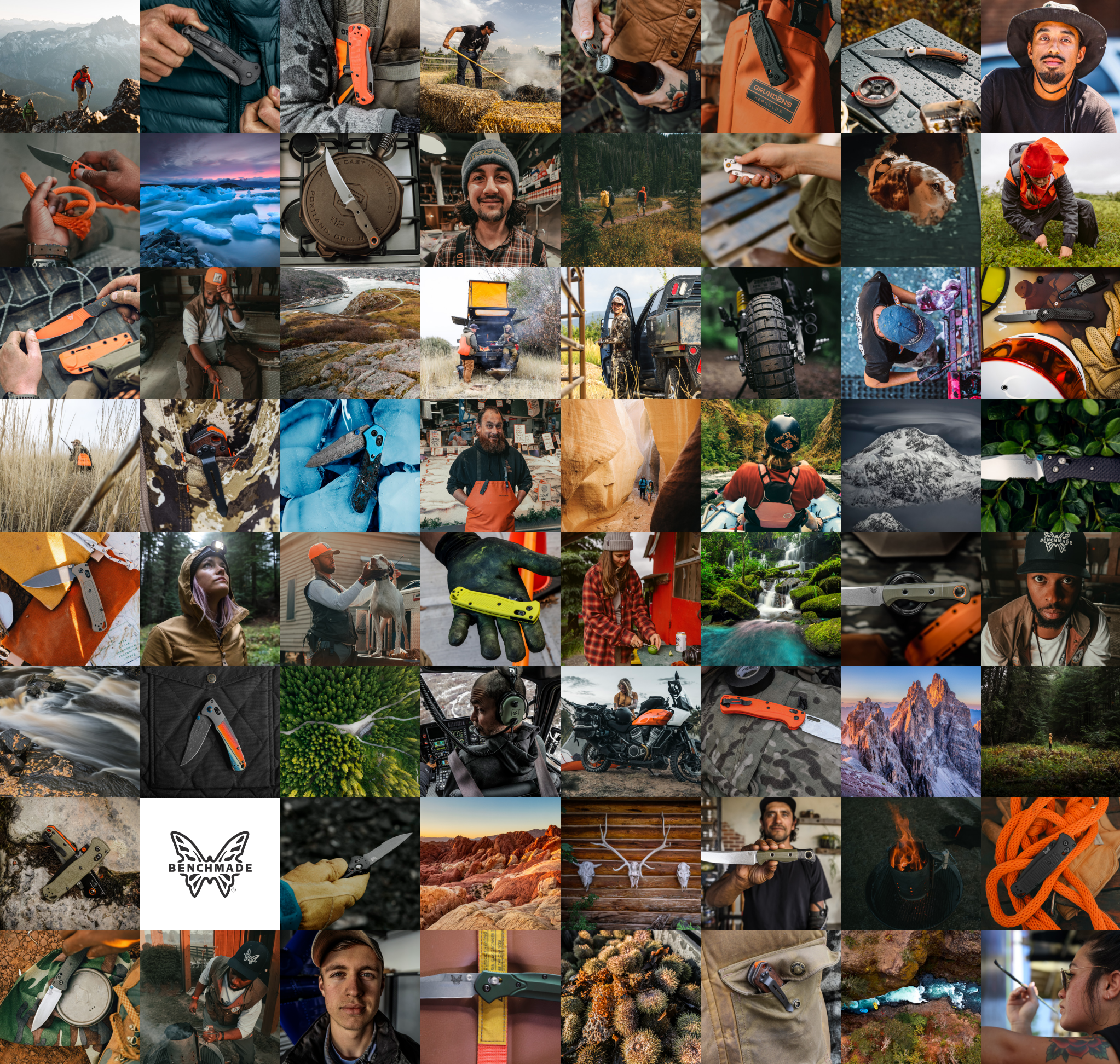




**INSPIRED BY THE  
POWER OF NATURE**



# INSPIRED BY PEOPLE, PLACES & ADVENTURE.

When we say a Benchmade is Yours For Life, it's because we believe real quality is a forever thing. Each and every one of our products is purpose-built to handle whatever life brings your way—for the rest of your life. Your Benchmade may not be your most valuable possession, but it will be your most valued. For our 2023 collection, we built from that foundational ethos with a vision that shows just how far a Benchmade can take you. From the call of the wild to the call of duty, from Brooklyn to Bozeman, from basecamp to the BBQ pit, this offering is inspired by—and designed for—those who live life fully.





**MADE IN  
THE USA**

## **SINCE 1987**

Since 1987, Benchmade Knife Company has combined precision machining with hand-assembled designs made in our factory in Oregon City, Oregon. Whether in the field, forest, or for everyday carry—Benchmade is committed to performance without compromise, for life.

Yours. for life.



[BENCHMADE.COM](http://BENCHMADE.COM)



● ● ●  
**535FE-05**  
 BUGOUT®



- + Mechanism: AXIS® lock
- + Blade Style: Drop-Point
- + Handle: Crater Blue Grivory®
- + Closed: 4.22" (10.72mm)
- + Open: 7.46" (18.95cm)
- + Weight: 1.85oz (52.45g)

535FE-05 LAUNCHES  
**\$200** **MAY '23**

CPM-S30V premium stainless steel (58-60HRC), Flat Dark Earth Cerakote®



● ● ●  
**5370FE-01**  
 SHOOTOUT®



- + Mechanism: Double-action out-the-front automatic. Spine fire release button
- + Blade Style: Tanto
- + Handle: Crater Blue Grivory® with lanyard loop
- + Closed: 4.71" (11.97mm)
- + Open: 8.22" (20.88cm)
- + Weight: 2.80oz (79.38g)

5370FE-01 LAUNCHES  
**\$350** **JUNE '23**

CPM-CruWear® super strong tool steel (63-65HRC), Flat Dark Earth PVD Finish



● ● ●  
**537FE-02**  
 BAILOUT®



- + Mechanism: AXIS® lock
- + Blade Style: Tanto
- + Handle: Crater Blue anodized 6061-T6 billet aluminum
- + Closed: 4.69" (11.91mm)
- + Open: 8.09" (20.55cm)
- + Weight: 2.70oz (76.54g)

537FE-02 LAUNCHES  
**\$300** **OCT '23**

CPM-M4 super steel (62-64HRC), Flat Dark Earth Cerakote®



● ● ●  
**585-03**  
 MINI BARRAGE®



- + Mechanism: Axis® Assist with integrated safety
- + Blade Style: Drop-Point
- + Handle: Blue Canyon Richlite
- + Closed: 4.00" (10.16cm)
- + Open: 6.91" (17.55cm)
- + Weight: 3.76 oz (106.59g)

585-03 LAUNCHES  
**\$300** **SEPT '23**

CPM-S30V premium stainless steel (58-60HRC)

# CRATER BLUE

Fluid movement is where color comes to life. This rich, dark hue lives where the cold meets the deep. We were inspired by the movement of the Alaskan winter waters of the north, where you can see and feel the color in the calm morning ocean. In Alaska, this wild blend of nature and frontier continues to ask the most of people and products, and only the well-made can stand up to any conditions.

Yours, for life.



BENCHMADE.COM

290BK  
**FULL IMMUNITY™**



+  
 Mechanism:  
 AXIS® lock

+  
 Blade Style:  
 Wharncliffe

+  
 Handle: Crater Blue  
 anodized 6061-T6  
 billet aluminum

+  
 Closed:  
 3.46"  
 (8.79mm)

+  
 Open:  
 5.94"  
 (15.09cm)

+  
 Weight:  
 2.29oz  
 (64.92g)

290BK  
 290BK-1  
 290BK-2  
**\$300**



CPM-M4 super steel (62-64HRC), Cobalt Black Cerakote®

LAUNCHES  
**MAY '23**

## LEVEL UP

The EDC world just leveled up in a big way. With the new Immunity™ family, a sub 2.5" CPM-M4 Wharncliffe Blade, and a svelte anodized aluminum handle, you've got a nails-tough tool that's small enough to carry in a suit jacket or even running gear.

BENCHMADE.COM

**533GY-06**  
**MINI BUGOUT®**



- + Mechanism: AXIS® lock

---

- + Blade Style: Drop-Point

---

- + Handle: Textured Sea Foam Grivory® w/ stainless steel liners

---

- + Closed: 3.70" (9.40mm)

---

- + Open: 6.49" (16.48cm)

---

- + Weight: 1.50oz (42.52g)



533GY-06  
**\$180**

CPM-S30V premium stainless steel (58-60HRC), Tungsten Gray Cerakote®



LAUNCHES  
**JUNE '23**

**5370BK-03**  
**SHOOTOUT®**



- + Mechanism: Double-action out-the-front automatic; spine fire release button

---

- + Blade Style: Tanto

---

- + Handle: Sea Foam Grivory® with lanyard loop

---

- + Closed: 4.71" (11.97mm)

---

- + Open: 8.22" (20.88cm)

---

- + Weight: 2.80oz (79.38g)

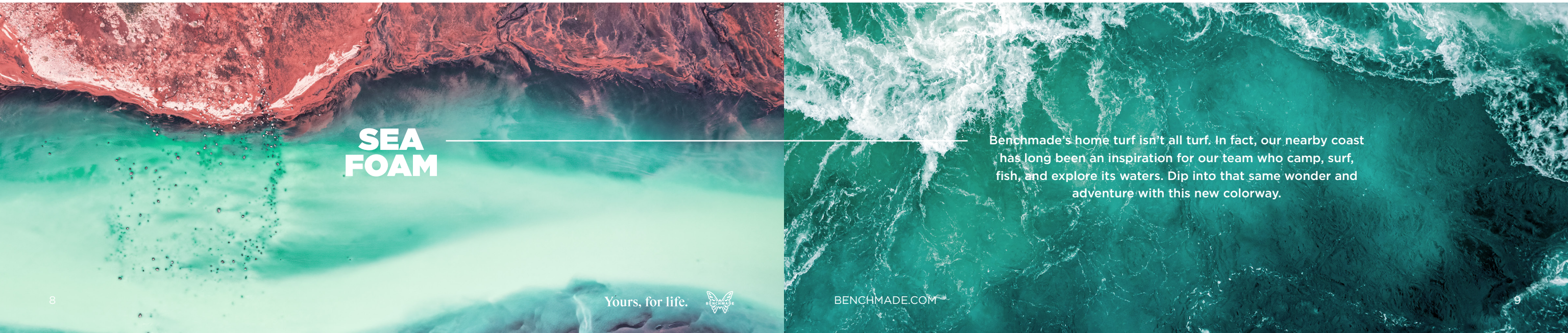


5370BK-03  
**\$375**

CPM-CruWear® super strong tool steel (63-65HRC), Black DLC



LAUNCHES  
**AUG '23**



**SEA  
 FOAM**

Benchmade's home turf isn't all turf. In fact, our nearby coast has long been an inspiration for our team who camp, surf, fish, and explore its waters. Dip into that same wonder and adventure with this new colorway.

Yours, for life.



BENCHMADE.COM

**535BK-06**  
**BUGOUT®**



- +  
 AXIS® Lock Mechanism

---

- +  
 Blade Style:  
 Drop-Point

---

- +  
 Handle: Textured  
 Alpine Glow  
 Grivory® w/  
 stainless steel liners

---

- +  
 Closed:  
 4.22"  
 (10.72cm)

---

- +  
 Open:  
 7.46"  
 (18.95")

---

- +  
 Weight:  
 1.85oz  
 (52.45g)



535BK-06  
**\$200**

CPM-S30V premium stainless steel (58-60HRC), Cobalt Black Cerakote®

LAUNCHES  
**MAY '23**

**533BK-05**  
**MINI BUGOUT®**



- +  
 AXIS® Lock Mechanism

---

- +  
 Blade Style:  
 Drop-Point

---

- +  
 Handle: Textured  
 Alpine Glow  
 Grivory® w/  
 stainless steel liners

---

- +  
 Closed:  
 3.70"  
 (9.40cm)

---

- +  
 Open:  
 6.49"  
 (16.48cm)

---

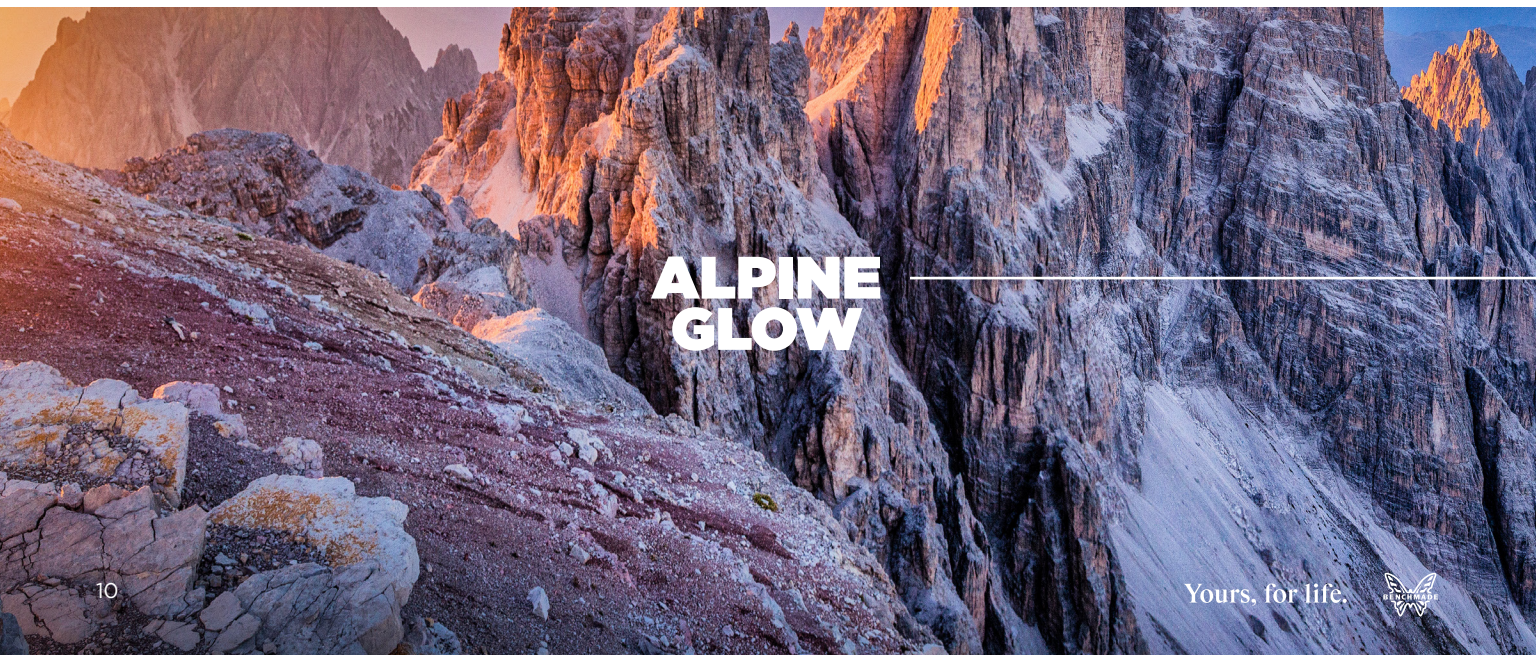
- +  
 Weight:  
 1.50oz  
 (42.52g)



533BK-05  
**\$180**

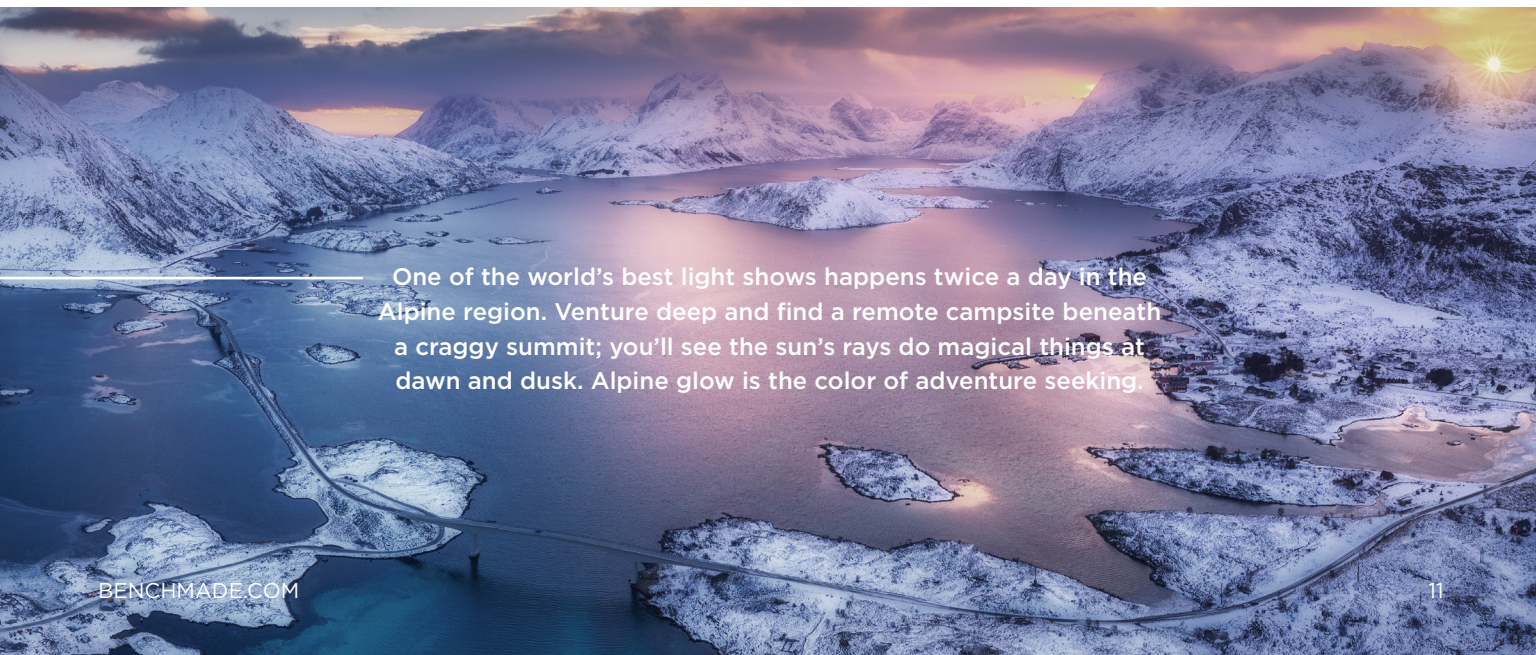
CPM-S30V premium stainless steel (58-60HRC), Cobalt Black Cerakote®

LAUNCHES  
**JUNE '23**



**ALPINE  
 GLOW**

Yours. for life.



One of the world's best light shows happens twice a day in the Alpine region. Venture deep and find a remote campsite beneath a craggy summit; you'll see the sun's rays do magical things at dawn and dusk. Alpine glow is the color of adventure seeking.

BENCHMADE.COM

● ●  
**317BK-02**  
 WEEKENDER®



- + Mechanism: Slip Joint
- + Blade Style: Clip-point / Utility drop-point
- + Handle: Burgundy Canvas Micarta w/ stainless decorative pivot rings
- + Closed: 4.08" (10.36mm)
- + Open: 7.05" (17.91cm) / 6.05" (15.37cm)
- + Weight: 2.28oz (64.64g)

317BK-02  
**\$380** LAUNCHES  
**SEPT '23**

CPM-S90V Premium stainless steel (59-61HRC), Black DLC Battlewash

● ● ●  
**533-04**  
 MINI BUGOUT®



- + AXIS® Lock Mechanism
- + Blade Style: Drop-Point
- + Handle: Mesa Red Grivory® handle with stainless steel liners
- + Closed: 3.70" (9.40mm)
- + Open: 6.49" (16.48cm)
- + Weight: 1.50oz (42.52g)

533-04  
**\$170** LAUNCHES  
**JUNE '23**

CPM-S30V premium stainless steel (58-60HRC)

**5370BK-04**  
**SHOOTOUT®**  
 ● ● ●

+ Mechanism: Double-action out-the-front automatic: spine fire release button

+ Blade Style: Tanto

+ Handle: Mesa Red Grivory® with lanyard loop

+ Closed: 4.71" (11.97mm)

+ Open: 8.22" (20.88cm)

+ Weight: 2.80oz (79.38g)

5370BK-04  
**\$375**

CPM-CruWear® super strong tool steel (63-65HRC), Black DLC



LAUNCHES  
**AUG '23**

## BURGUNDY

A campfire among friends is where the timeless Weekender® shines. Slice salami and cheese with one blade; whittle a marshmallow stick with the other. It's a timeless design elevated by CPM-S90V steel, a canvas micarta handle, and a perfectly angled bottle opener. It's an heirloom piece waiting to happen.

## MESA RED

Yours, for life.

Deep in the canyon country, you find solitude amongst a rugged, otherworldly landscape. But you have to earn that privilege. Each step requires an explorer's grit to navigate. This is a shade that emerges from the challenge.



2950BK-2

# PARTIAL AUTO IMMUNITY™



+ Mechanism: Auto AXIS® lock with integrated safety

+ Blade Style: Wharncliffe

+ Handle: Woodland Green anodized 6061-T6 billet aluminum

+ Closed: 3.46" (8.79mm)

+ Open: 5.41" (13.74cm)

+ Weight: 2.23oz (63.22g)



California legal automatic



EDC



TACTICAL

LANYARD INCLUDED



2950BK  
2950BK-1  
2950BK-2  
**\$325**

CPM-M4 super steel (62-64HRC), Cobalt Black Cerakote®



LAUNCHES  
**SEPT '23**

2900BK-1

# AUTO IMMUNITY™



+ Mechanism: Auto AXIS® lock with integrated safety

+ Blade Style: Wharncliffe

+ Handle: Flat Dark Earth anodized 6061-T6 billet aluminum

+ Closed: 3.46" (8.79mm)

+ Open: 5.94" (15.09cm)

+ Weight: 2.37oz (67.19g)



EDC



TACTICAL

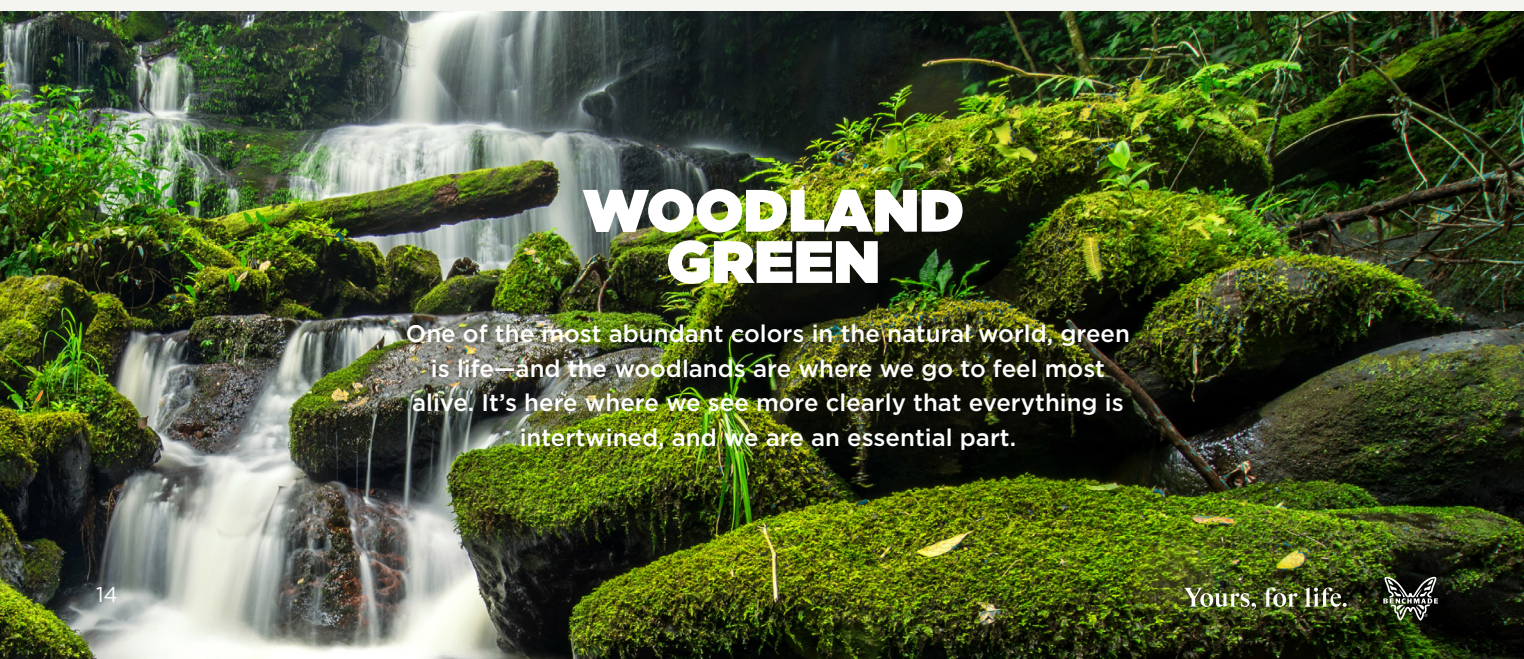
LANYARD INCLUDED



2900BK  
2900BK-1  
2900BK-2  
**\$325**

CPM-M4 super steel (62-64HRC), Cobalt Black Cerakote®

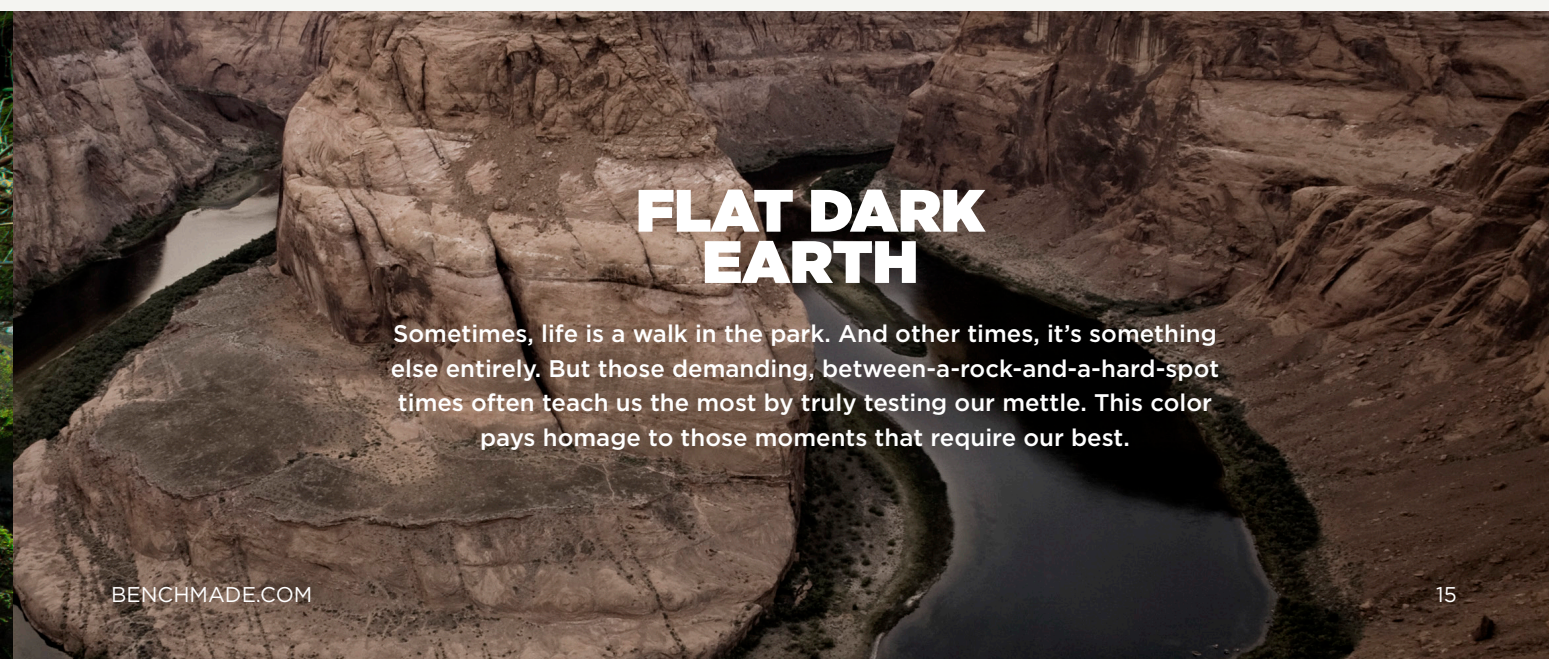
2900BK LAUNCHES  
**SEPT '23**



## WOODLAND GREEN

One of the most abundant colors in the natural world, green is life—and the woodlands are where we go to feel most alive. It's here where we see more clearly that everything is intertwined, and we are an essential part.

Yours. for life.



## FLAT DARK EARTH

Sometimes, life is a walk in the park. And other times, it's something else entirely. But those demanding, between-a-rock-and-a-hard-spot times often teach us the most by truly testing our mettle. This color pays homage to those moments that require our best.

BENCHMADE.COM

● ●  
**9071SBK-1**  
 CLAYMORE



- + Mechanism: Push-button automatic with integrated safety
- + Blade Style: Tanto
- + Ranger Green textured Grivory® handle with stainless steel liners
- + Closed: 5.00" (12.70mm)
- + Open: 8.60" (21.84cm)
- + Weight: 3.87oz (109.71g)

9071BK-1 **\$260** | 9071SBK-1 **\$260** | LAUNCHES **MAY '23**  
 CPM-D2 tool steel (60-62HRC), Cobalt Black Cerakote®

● ●  
**9570BK-1**  
 MINI CLAYMORE



- + Mechanism: Push-button automatic with integrated safety
- + Blade Style: Drop-Point
- + Ranger Green textured Grivory® handle with stainless steel liners
- + Closed: 4.18" (10.62mm)
- + Open: 7.18" (18.24cm)
- + Weight: 2.56oz (72.57g)

9570BK-1 **\$230** | LAUNCHES **APRIL '23**  
 CPM-D2 tool steel (60-62HRC), Colbalt Black Cerakote®

**4300BK-02**  
**CLA**  
 ● ● ●

+ Mechanism: Push-button w/ integrated safety

+ Blade Style: Drop-Point

+ Handle: OD Green G10

+ Closed: 4.45" (11.30mm)

+ Open: 7.85" (19.94cm)

+ Weight: 3.47oz (98.37g)



4300BK-02 **\$400**  
 CPM-MagnaCut (60-62HRC), Black DLC Battlewash



LAUNCHES **AUG '23**



The toughest push-button automatic in our line is now offered in a smaller frame as the Mini Claymore. Also new for 2023, we're introducing a tanto blade edge option on the full size model. Get after it.

Yours, for life.



**OD GREEN**

There's a loamy trail shrouded in morning fog that leads through a dense stand of evergreens. Among those trees, you head off the main path and find your way to a cathedral-size opening that's all yours. It's time to make camp and gather wood.

BENCHMADE.COM

4300BK-03

# CLA



+ Mechanism: Push-button with integrated safety

+ Blade Style: Drop-Point

+ Handle: Ivory G10 Handle w/ Stainless Steel Liners

+ Closed: 4.45" (11.30mm)

+ Open: 7.85" (19.94cm)

+ Weight: 3.47oz (98.37g)



4300BK-03  
**\$450**

CPM-MagnaCut (60-62HRC), Black DLC Battlewash

LAUNCHES  
**AUG '23**

5370FE-02

# SHOOTOUT®



+ Mechanism: Double-action out-the-front automatic; spine fire release button

+ Blade Style: Tanto

+ Handle: Cool Gray Grivory® w/ lanyard loop

+ Closed: 4.71" (11.97mm)

+ Open: 8.22" (20.88cm)

+ Weight: 2.80oz (79.38g)



5370FE-02  
**\$350**

CPM-CruWear® super strong tool steel (63-65HRC), Flat Dark Earth PVD

LAUNCHES  
**JUNE '23**

## IVORY

The Composite Lite Auto (CLA) was Benchmade's first G10 automatic—and it's still a benchmark in the all-purpose, mid-sized platform category. Knife enthusiasts will covet the drop-point blade and enlarged actuation button 'til the end of time, and we've got to say it looks better than ever in Ivory.



The new 5370FE-02 Shootout® comes in a Cool Gray Grivory® handle and features the same detailed grip texture as the original, providing fast indexing and great control in high-pressure scenarios. The Flat Dark Earth PVD-coated CPM-CruWear® blade offers high strength and durability to this double-action out-the-front automatic. Complete with a lanyard loop and a reversible pocket clip, the Shootout® packs a punch.

**273-03**  
**MINI ADAMAS®**



+

Mechanism:  
 AXIS® lock

+

Blade Style:  
 Drop-Point

+

Handle: Shredded  
 Carbon Fiber with  
 Flat Dark Earth Liners

+

Closed:  
 4.37"  
 (11.10mm)

+

Open:  
 7.62"  
 (19.35cm)

+

Weight:  
 4.60oz  
 (130.41g)



273-03  
**\$375**

Blade Steel: CPM-CruWear® super strong tool steel (63-65HRC)



LAUNCHES  
**SEPT '23**

**945-2**  
**MINI OSBORNE**



+

Mechanism:  
 AXIS® lock

+

Blade Style:  
 Reverse Tanto

+

Handle: Carbon  
 fiber with stainless  
 steel liners

+

Closed:  
 3.84"  
 (9.754mm)

+

Open:  
 6.76"  
 (17.17cm)

+

Weight:  
 1.89oz  
 (53.80g)



945-2  
**\$340**

Blade Steel: CPM-S90V super premium stainless steel (59-61HRC)



LAUNCHES  
**JULY '23**

Our product team asked themselves, “If we made a knife that an Army Ranger couldn’t break, what would that look like?” Their design challenge led them to a result that looks exactly like the Adamas. With its tank-tough build and CPM-CruWear® blade, it’s a reliable tool with lifetimes of use to give.

The Osborne family is widely considered to rank among the finest everyday carry knives ever created. Why? It’s slim, slick, and with premium materials and build, it can handle anything that comes its way. This Mini boasts the same materials, options, and dimensions as its full-size counterpart but in a more pocketable profile.

535BK-08  
**BUGOUT®**



+ Mechanism:  
AXIS® lock

+ Blade Style:  
Drop-Point

+ Handle:  
Storm Gray  
Grivory®

+ Closed:  
4.22"  
(10.72mm)

+ Open:  
7.46"  
(18.95cm)

+ Weight:  
1.85oz  
(52.45g)



535BK-08  
**\$200**

CPM-S30V premium stainless steel (58-60HRC), Cobalt Cerakote®



LAUNCHES  
**JULY '23**

537SGY-03  
BAILOUT®



537GY-03  
BAILOUT®



+ Mechanism:  
AXIS® lock

+ Blade Style:  
Tanto

+ Handle: Black  
anodized 6061-T6  
billet aluminum w/  
Carbide glass breaker

+ Closed:  
4.69"  
(11.91mm)

+ Open:  
8.09"  
(20.55cm)

+ Weight:  
2.70oz  
(76.54g)

537SGY-03  
**\$300**

LAUNCHES  
**OCT 23'**

Blade Steel: CPM-M4 super steel (62-64HRC), Tungsten Gray Cerakote®



+ Mechanism:  
AXIS® lock

+ Blade Style:  
Tanto

+ Handle: Black  
anodized 6061-T6  
billet aluminum w/  
Carbide glass breaker

+ Closed:  
4.69"  
(11.91mm)

+ Open:  
8.09"  
(20.55cm)

+ Weight:  
2.70oz  
(76.54g)

537GY-03  
**\$300**

LAUNCHES  
**OCT '23**

Blade Steel: CPM-M4 super steel (62-64HRC), Tungsten Gray Cerakote®

**STORM  
GRAY**

Mother Nature can bring fury, too. The leveling power of a tempest and its mysterious brume are all infused into this new Storm Gray hue. So you can bring fury.



748  
**NARROWS™**



- + Mechanism: AXIS® lock

---

- + Blade Style: Drop-Point

---

- + Handle: 6Al-4V Titanium

---

- + Closed: 4.58" (11.68mm)

---

- + Open: 8.02" (20.32cm)

---

- + Weight: 2.41oz (85.05g)



748  
**\$580**

M390 super premium stainless steel (58-61HRC)



LAUNCHES  
**JUNE '23**

● ●  
**560-03**  
FREEK®



● ●  
**565BK-02**  
MINI FREEK®



- + Mechanism: AXIS® lock
- + Blade Style: Drop-Point
- + Handle: Carbon Fiber

---

- + Closed: 4.86" (12.34mm)
- + Open: 8.46" (21.49cm)
- + Weight: 4.12oz (116.80g)

560-03  
**\$350** | LAUNCHES  
**NOV '23'**

Blade Steel: CPM-S90V super premium stainless steel (59-61HRC)



- + Mechanism: AXIS® lock
- + Blade Style: Drop-Point
- + Handle: Black and gray textured G10 with red base layer and stainless steel liners

---

- + Closed: 4.05" (10.29mm)
- + Open: 7.05" (17.91cm)
- + Weight: 2.89oz (81.93g)

565BK-02  
**\$270** | LAUNCHES  
**SEPT '23**

Blade Steel: CPM-M4 super premium tool steel (62-64HRC), Black Cerakote

Meet the thinnest profile folding knife in our entire line. The titanium handle and M390 steel of this aptly named blade will raise the brows of both the UL backpacker and EDC geeks alike. It's 33% thinner than the venerable Bugout® with up to 2x the break force too.

Collectors and enthusiasts have long loved the Freek family for its combination of premium materials and eye-popping style. Now you can choose from a mini or full-size Freek in either material combination. There's the ultra-hard M4 steel with the original multilayered G10 handle now available as a mini or the upgraded Carbon Fiber handle with a CPM-S90V premium stainless steel blade now available as a full-size option.



**9071BK**  
CLAYMORE



- + Mechanism: Push-button automatic with integrated safety
- + Blade Style: Tanto
- + Handle: Black textured Grivory® with stainless steel liners
- + Closed: 5.00" (12.70mm)
- + Open: 8.60" (21.84cm)
- + Weight: 3.50oz (99.22g)

**9570BK**  
MINI CLAYMORE



- + Mechanism: Push-button automatic with integrated safety
- + Blade Style: Drop-point
- + Handle: Black textured Grivory® with stainless steel liners
- + Closed: 4.18" (10.62mm)
- + Open: 7.18" (18.24cm)
- + Weight: 2.56oz (72.57g)

**4850**  
**OM™**

- + Mechanism: Double-action out-the-front automatic; Spine fire release button

- + Blade Style: Clip-point

- + Handle: Black anodized 6061-T6 aircraft-grade aluminum

- + Closed: 3.40" (8.64mm)

- + Open: 5.88" (14.94cm)

- + Weight: 1.51oz (42.81g)



4850 ..... 4850BK  
**\$340** ..... **\$360**



Blade Steel: CPM-S30V premium stainless steel (58-60HRC), 4850BK: Black DLC



LAUNCHES  
**AUG '23**

9071BK ..... 9071SBK ..... LAUNCHES  
**\$260** ..... **\$260** ..... **MAY '23**

Blade Steel: CPM-D2 tool steel (60-62HRC), Cobalt Black Cerakote®

9570BK ..... LAUNCHES  
**\$230** ..... **APRIL '23**

Blade Steel: CPM-D2 tool steel (60-62HRC), Cobalt Black Cerakote®

This explosive little powerhouse punches well beyond its weight class. In fact, it's the strongest push-button automatic in our entire product line. How? Our engineers pared away all non-essential material to create a slender, minimalist silhouette boasting CPM-D2 steel for toughness and edge retention.

With everything you need and nothing you don't in an OTF automatic, this little wonder weighs in at less than two ounces and boasts an anodized 6061 aluminum handle with a dual-action spine fire release button. It's the ultimate low-profile OTF.



●  
**185BK**  
SOCP® FIXED BLADE



● ●  
**185T**  
SOCP® FIXED BLADE TRAINER



● ●  
**185SBK-1**  
SOCP® FIXED BLADE



●  
**185SBK**  
SOCP® FIXED BLADE



✦ Mechanism: Fixed Blade  
✦ Blade Style: Dagger  
✦ Handle: Black, Peel Ply G10

✦ Length: 11.734" (29.81cm)  
✦ Sheath Weight: 2.56oz (72.57g)  
✦ Weight: 5.78oz (163.86g)

✦ Mechanism: Fixed Blade  
✦ Blade Style: Dagger  
✦ Handle: Black, Peel Ply G10

✦ Length: 11.734" (29.81cm)  
✦ Sheath Weight: 2.56oz (72.57g)  
✦ Weight: 5.78oz (163.86g)

✦ Mechanism: Fixed Blade  
✦ Blade Style: Dagger  
✦ Handle: Tan, Peel Ply G10

✦ Length: 11.734" (29.81cm)  
✦ Sheath Weight: 2.56oz (72.57g)  
✦ Weight: 5.78oz (163.86g)

✦ Mechanism: Fixed Blade  
✦ Blade Style: Dagger  
✦ Handle: Black, Peel Ply G10

✦ Length: 11.734" (29.81cm)  
✦ Sheath Weight: 2.56oz (72.57g)  
✦ Weight: 5.78oz (163.86g)

185BK  
**\$400** | LAUNCHES  
**APRIL '23**

185T  
**\$250** | LAUNCHES  
**APRIL '23**

185SBK-1  
**\$400** | LAUNCHES  
**JUNE '23**

185SBK  
**\$400** | LAUNCHES  
**JUNE '23**

Blade Steel: CPM-3V super tough tool steel (60-62HRC), Cobalt Black Cerakote®

Blade Steel: 440C Stainless Steel (58-60HRC), Red Cerakote®

CPM-3V super tough tool steel (60-62HRC), Cobalt Black Cerakote®

Blade Steel: CPM-3V super tough tool steel (60-62HRC), Cobalt Black Cerakote®

**SOCP**

The 185 SOCP® Fixed Blade is a Greg Thompson design made for our warfighters who need a secondary individual weapon system to back up their M4. This combat knife is lightweight, compact, versatile, and effective compared to current issue bayonets and previous generation Army bayonets that are bulky, heavy, and largely ineffective. Made primarily for special operations personnel and general infantry based on feedback from the SOCP community, the CPM-3V is tough and resilient, resulting in a thin, lightweight knife capable of extreme use without fear of failure.





15600-01  
**RAGHORN®**



- + Mechanism: Fixed Blade

---

- + Blade Style: Drop-point featuring SelectEdge®

---

- + Handle: OD Green G10

---

- + Length: 8.90" (22.61cm)

---

- + Sheath Weight: 1.70oz (45.36g)

---

- + Weight: 3.56oz (100.92g)



15600-01  
**\$300**

CPM-S30V premium stainless steel (58-60HRC)



LAUNCHES  
**AUG '23**

● ● ●  
15700-01  
FLYWAY®



- + Mechanism: Fixed Blade
- + Blade Style: Straight-back featuring SelectEdge®
- + Handle: OD Green G10

---

- + Length: 6.96" (17.68cm)
- + Sheath Weight: 1.70oz (19.84g)
- + Weight: 2.10oz (59.53g)

15700-01  
**\$260** LAUNCHES  
**AUG '23**

Blade Steel: CPM-S90V super premium stainless steel (59-61HRC)

● ● ●  
15536  
TAGGEDOUT®



- + Mechanism: AXIS® lock
- + Blade Style: Clip-point featuring SelectEdge®
- + Handle: OD Green G10 with orange anodized aluminum barrel spacers

---

- + Closed: 4.63" (11.76cm)
- + Open: 8.13" (20.65cm)
- + Weight: 2.10oz (59.53g)

15536  
**\$300** LAUNCHES  
**JULY '23**

CPM-S45VN premium stainless steel (60-62HRC)



Every ounce matters for the hunter chasing prey across the backcountry and plains. The 15600-01 Raghorn® features an OD Green G10 handle with the same CPM-S30V steel and SelectEdge sharpness as the original for field performance you can rely on.

The Flyway® has proven its worth as the ultimate upland game and waterfowl fixed blade. With just the right amount of CPM-S90V blade, featuring SelectEdge, this knife is perfect for breasting out game birds. An OD Green G10 handle boasts dialed-in ergonomics, and the hi-vis orange sheath makes this easy to throw into a pack.

On a long-distance backcountry hunt, every ounce counts. The Taggedout® borrows from our best-selling Bugout® and delivers a 3.5" blade in a package weighing in at 2.10 ounces. It's an all-star in camp, handling food prep, field dressing, and cutting cordage with ease—fits slim in your pocket, too.



● ●  
**15535OR-01**  
 TAGGEDOUT®



- + Mechanism: AXIS® lock
- + Blade Style: Clip point featuring SelectEdge®
- + Handle: Carbon Fiber with orange anodized backspacer and lanyard hole
- + Closed: 4.63" (11.76cm)
- + Open: 8.13" (20.65cm)
- + Weight: 2.10oz (59.53g)

15535OR-01 LAUNCHES  
**\$375** **AUG '23**

Blade Steel: CPM-MagnaCut (60-62HRC), Orange Cerakote®

● ●  
**15201OR**  
 ALTITUDE®



- + Mechanism: Fixed Blade
- + Blade Style: Drop-point featuring SelectEdge®
- + Handle: Orange Cerakote® with Carbon Fiber
- + Length: 7.38" (18.75cm)
- + Sheath Weight: .76oz (21.55g)
- + Weight: 1.67oz (47.34g)

15201OR LAUNCHES  
**\$300** **SEPT '23**

Blade Steel: CPM-S90V super premium stainless steel (59-61HRC), Orange Cerakote®

**15062**  
**GRIZZLY CREEK**



+ Mechanism: AXIS® lock

+ Blade Style: Drop-point featuring SelectEdge®

+ Handle: Stabilized wood with stainless steel liners

+ Closed: 4.33" (11.00cm)

+ Open: 7.81" (19.84cm)

+ Weight: 4.18z (118.50g)



15062  
**\$275**

Blade Steel: CPM-S30V premium stainless steel (58-60HRC)



LAUNCHES  
**JULY '23**

The new 15535OR-1 Taggedout® is for hunters who travel long distances in the backcountry and need a lightweight folder that can handle any task in the wilderness. From prepping food at camp to skinning or field dressing animals to cutting paracord, the Taggedout® can get it done. The new 15535OR-1 Taggedout® is our first blade in the hunt line to feature MagnaCut steel, which is a premium stainless steel that is extremely tough and has both high wear resistance and corrosion resistance.

Hunting knives often ride the fence between strength and weight, making caveats along the way in one category or the other. Enter the Grizzly Creek, the total package for a hunting folder with a perfect blade size and shape for just about any game cleaning from squirrel to deer, plus a fold-out gut hook. What's more, it's got style for days.





# LifeSharp

When we say a Benchmade is yours, for life, we mean it. We will re-sharpen your Benchmade back to a factory edge, anytime you need. Learn more at [benchmade.com/lifesharp-service](https://benchmade.com/lifesharp-service).



**EXPLORE THE CORE COLLECTION HERE**

## NEW 2023 BENCHMADE COLLECTION





**2023 COLLECTION**

# 2023 COLLECTION



## T A B L E O F C O N T E N T S

6	TECHNICAL FEATURES	16	BLUE CLASS	75	ACCESSORIES
8	BLADE STEEL	34	HUNT CLASS	76	PRODUCT INDEX
12	GOLD CLASS	48	BLACK CLASS		



# LIFE SHARP

## GUARANTEED FOR LIFE

When we say a Benchmade is yours, for life, we mean it. We will re-sharpen your Benchmade back to a factory edge anytime you need. Learn more at [benchmade.com/lifesharp-service](https://www.benchmade.com/lifesharp-service).



# MADE IN THE USA

**SINCE 1987**

Since 1987, Benchmade Knife Company has combined precision machining with hand assembled designs made in our factory in Oregon City, Oregon. Whether it's in the field, forest, or for everyday carry, Benchmade is committed to performance without compromise, for life.



# OUR COMMITMENT

Valued Retailer,

We are very excited to continue our momentum and deepen our roots with each of our retail partners as we begin 2023. Consistent focus on our brand and our commitment to driving business at retail have created a challenging yet rewarding look and direction for this new year.

The expectations we have for our products have never been higher. The pride that each of us at the company has in manufacturing quality, high-performance, dependable products, and delivering to you on time has sharpened our intentions to bring more value to the market.

What you see in this season's catalog reflects our company's hard work and values to be the best knife company available to customers and the retailers that serve them.

We understand our success is tied to our service, and we are thrilled to showcase the gains we have made over the recent months. We truly value your support and loyal engagement with our brand and appreciate your encouragement to be a more driven and competitive partner.

Please know that that spirit has a place in each product and can be felt by every loyal, and new, Benchmade user.

On behalf of Benchmade, please enjoy the lineup this season.

Sincerely  
**Jon deAsis** - President & CEO

**GLENN LEISCHNER**  
Laser Operator III

Glenn has been building knives at Benchmade for 15 years.

# HOW YOU CHOOSE YOUR KNIFE

# DEPENDS ON HOW YOU LIVE YOUR LIFE



## EDC

Not obtrusive or uncomfortable in slacks or shorts, just convenient and well-fitted to your general needs.



## OUTDOOR

From water to woods, backpacking to car camping, kayaking to fly-fishing, these versatile cutting tools can be used for many tasks.



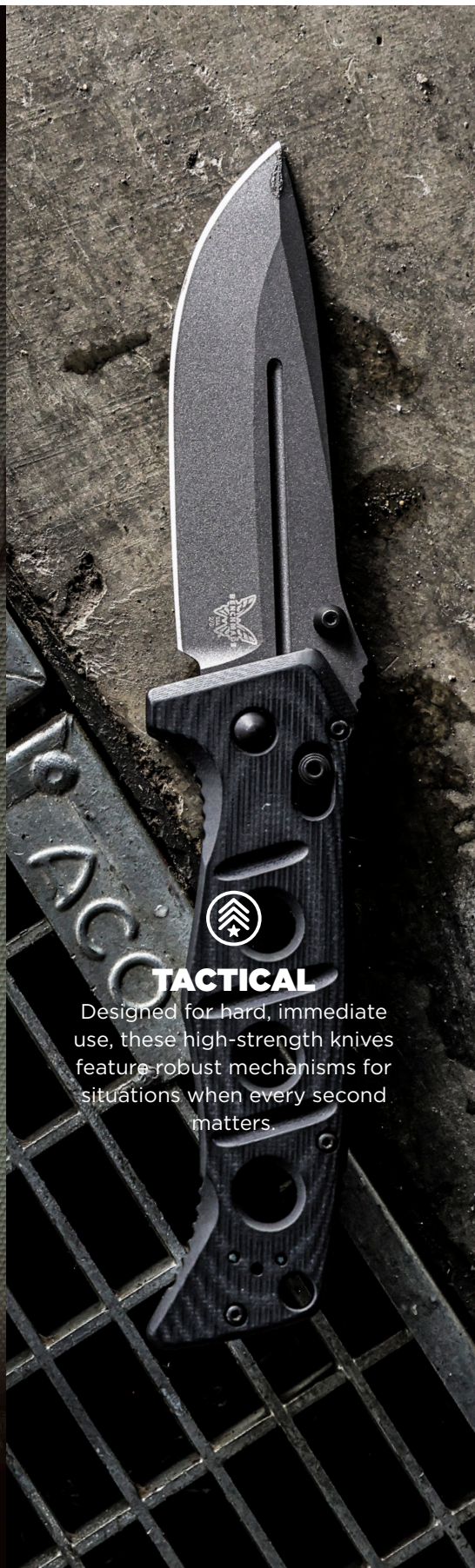
## SURVIVAL

Things can happen unexpectedly for any adventurer. These knives have been built for the unexpected.



## HUNT

Knives are a critical component of a successful hunt. These are the most advanced hunting knives ever made.



## TACTICAL

Designed for hard, immediate use, these high-strength knives feature robust mechanisms for situations when every second matters.



## RESCUE

Built for critical situations. Gloved hands and the need to cut pliable materials are considerations in the design of these knives.



Metal Matters

# BLADE STYLES



MANUAL OPENING

"Manuals" must be opened 100% from the closed position to the open position by the user.

ASSISTED OPENING

"Assists" have a spring that encourages the blade into the open position once the user pushes the blade manually beyond a certain point.

AUTOMATIC OPENING

"Autos" have a button or other actuation switch that mechanically fires the blade open without the user directly manipulating the blade.

FIXED BLADE

These knives do not fold and almost always come with a sheath to protect the edge.

BALI-SONG

"Balis" or "butterfly knives" open and close by way of two handles that rotate around the front and back of the blade.

**BK**  
Black coating, no serrations

**NONE**  
No coating, no serrations

**GY**  
Gray coating, no serrations

**FE**  
Flat Earth coating

**DLC**  
Diamond-Like-Carbon coating

**BK**  
Black

**ORG**  
Orange

**WHT**  
White

**SBK**  
Serrations and black coating

**S**  
Serrations, no coating

**SGY**  
Serrations and gray coating

**SFE**  
Serrations and Flat Earth coating

**OR**  
Orange Coating

**SN**  
Sand

**OD**  
Olive Drab

**BLU**  
Blue

\*-1, -2, etc. typically indicate handle material variations

Trailing Point

The spine curves upward to create an elevated point that's typically higher than the handle.

Tanto

This shape is easily identified by the angular lines. The knife edge is flat and transitions with a hard break in the angle from the tip to the primary edge.

Opposing Bevel

Design features a non-uniform blade geometry that creates an offset pry-tip, while maintaining a consistent chisel grind on the cutting edge.

Drop-Point

Drops off the spine to the tip. Tip height is typically below the center line on the blade.

Reverse Tanto

Defined by the bevel creating an upside-down tanto profile, adding weight forward on the blade.

Spear-Point

Must be symmetrical considering the blade profile. \*Traditionally, spear-points are double-sided, but those knives are more specifically referred to as daggers.

Straight Back

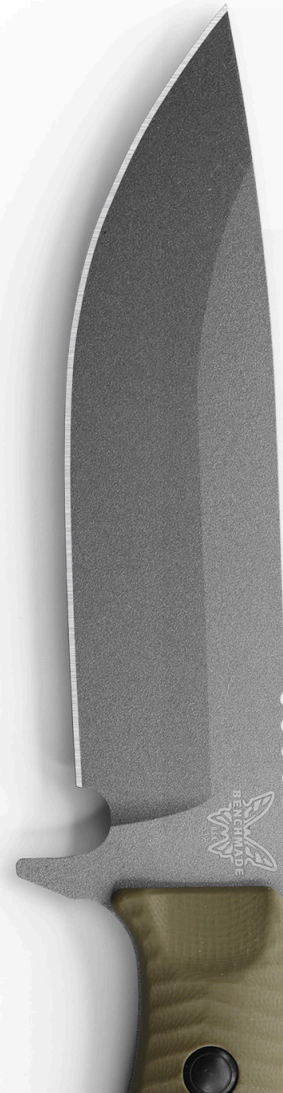
This shape features a curved cutting edge with a flat spine creating a keen tip for precision cutting

Sheepsfoot

The spine of the blade "rolls" into the tip earlier. This blade has a completely straight edge.

Clip-Point

Blade contains a sharp beak, typically forward of the midpoint, as if the tip has been "clipped off."





## BUILT FOR STRENGTH

Blade strength is the maximum stress withstood before a blade breaks or fails. These are among some of the strongest steels in the industry that can stand up to the demands of hard use applications.



**CPM-S30V** / HRC: 58-60

As a blade material it offers excellent corrosion resistance and superb edge qualities.



**CPM-M4** / HRC: 62-64

A powder-metal, non-stainless, special purpose high-speed steel with excellent wear resistance and toughness.



**CPM-3V** / HRC: 60-62

A powder-metal tool steel, its high carbon and vanadium paired with low chromium make it exceptionally tough while still being able to maintain a good cutting edge.



## BUILT FOR EDGE RETENTION

Edge retention is how long a blade can maintain its sharpened edge. When performing cutting tasks over and over, you need an edge that stays sharp. These steels are among some of the best for edge retention.



**CPM-154** / HRC: 58-61

This powder-metal version of conventional 154CM steel has a much finer microstructure with smaller carbide particles than its counterpart, resulting in improved toughness and strength.



**D2** / HRC: 60-62

A high-carbon, high-chrome tool steel provides better edge retention than 440C and 154CM; however, it has less toughness and corrosion resistance than either of these alloys.



**CPM-S90V** / HRC: 59-61

A true super-steel, S90V offers substantial improvements in corrosion resistance over 440C and wear resistance far beyond that of D2.



**CPM-20CV** / HRC: 59-61

Excellent edge retention and great corrosion resistance are typically hard to find in one steel; however, they meet here in CPM-20CV.



## BUILT FOR TOUGHNESS

Blade toughness is the resistance of a blade to fractures and chipping. This is an important consideration for activities such as batoning or other uses that may involve force on the blade to perform cutting tasks. These steels have exceptional toughness.



**CPM-D2** / HRC: 60-62

This powder-metal version of conventional D2 steel has a much finer microstructure with smaller carbide particles than its counterpart, resulting in improved toughness and strength. A great choice for the customer who loves D2 but wants an upgrade in performance.



**DAMASTEEL** / HRC: 58-60

With alternating layers of RWL34 and RPMC27, this powder metal 'Damascus' steel doesn't just get by on its looks alone. The interweaving of these two alloys provides great strength and toughness.



**CPM-S45VN** / HRC: 60-62

The higher levels of Chromium along with the introduction of Nitrogen in S45VN allow for improved corrosion resistance over CPM-S30V and CPM-S90V, while balancing the excellent performance found in both of those steels.



**CPM-CRUWEAR** / HRC: 63-65

An air-hardenable non-stainless tool steel that has improved toughness and wear resistance over D2 steel. CPM-CruWear has vanadium to form extremely hard vanadium carbides for edge retention along with tungsten and molybdenum to increase the working hardness without reducing the toughness.



## BUILT TO AVOID CORROSION

Corrosion resistance is measured by the resistance of a blade to oxidization and chemical attack. This is an important consideration when you're going to be in wet or humid environments and need a blade that can stand up to the elements.



**N680** / HRC: 57-59

A special-application steel for when corrosion resistance is the primary requirement. Ideal for salt water applications, the addition of nitrogen to the alloy gives this the best corrosion resistance of any blade steel.



**M390** / HRC: 58-61

A super-performance blade steel with exceptional cutting ability and wear resistance.



**440C** / HRC: 58-60

Originally designed for ball bearings, valves and gears, this high-carbon stainless steel is the staple of the cutlery industry.



**154CM** / HRC: 58-61

A premium-grade steel developed for tough industrial applications. Known best for its all-around qualities, 154CM offers a good balance of corrosion resistance, toughness and edge quality.



# GOLD CLASS

**945-221 GOLD CLASS  
MINI OSBORNE**  
The Arctic Storm



Inspired by Norse mythology and the cold Baltic Sea, a swirling Ægir™ patterned Damasteel® blade meets the icy chill of flowing blue accents in the Fat Carbon "Arctic Storm" handle.





# 945-221

THE 945 MINI OSBORNE GETS THE GOLD TREATMENT. SAME BENCHMADE QUALITY, NEW BENCHMADE LOOK.



## Mini Osborne

945-221 OSBORNE DESIGN

- + **MECHANISM** - AXIS® lock
- + **BLADE STYLE** - Reverse Tanto
- + **BLADE STEEL** - Ægir™ Damasteel®
- + **HANDLE** - Arctic Storm Fat Carbon handles w/ aqua anodized bolsters; gold plated floating back spacer
- + **BLADE LENGTH** - 2.92" (7.42cm)

### CONFIGURATIONS/MSRP

945-221 ⋮ ⋮ ⋮ \$700

- + **BLADE THICKNESS** - 0.10" (2.64cm)
- + **OPEN** - 6.76" (17.17cm)
- + **CLOSED** - 3.84" (9.75cm)
- + **WEIGHT** - 2.24oz (63.50g)
- + **HANDLE THICKNESS** - 0.43" (10.80mm)

Available for sale through July 31, 2023



# BLUE CLASS

THE DAILY DRIVERS



SCAN FOR MORE



CONFIGURATIONS/MSRP

940 | | \$240

### Osborne

940 OSBORNE DESIGN

- + MECHANISM - AXIS® lock
- + BLADE STYLE - Reverse tanto
- + BLADE STEEL - CPM-S30V premium stainless steel (58-60 HRC)
- + HANDLE - Osborne Green anodized 6061-T6 billet aluminum with stainless steel liners
- + BLADE LENGTH - 3.40" (8.64cm)
- + BLADE THICKNESS - 0.115" (2.92mm)
- + OPEN - 7.87" (19.99cm)
- + CLOSED - 4.47" (11.35cm)
- + WEIGHT - 2.90oz (82.21g)
- + HANDLE THICKNESS - 0.41" (10.41mm)



CONFIGURATIONS/MSRP

940-1 | | \$350

### Osborne

940-1 OSBORNE DESIGN

- + MECHANISM - AXIS® lock
- + BLADE STYLE - Reverse tanto
- + BLADE STEEL - CPM-S90V premium stainless steel (59-61 HRC)
- + HANDLE - Carbon fiber with stainless steel liners
- + BLADE LENGTH - 3.40" (8.64cm)
- + BLADE THICKNESS - 0.115" (2.92mm)
- + OPEN - 7.87" (19.99cm)
- + CLOSED - 4.47" (11.35cm)
- + WEIGHT - 2.44oz (69.17g)
- + HANDLE THICKNESS - 0.44" (11.18mm)



CONFIGURATIONS/MSRP

940-2 | | \$230

### Osborne

940-2 OSBORNE DESIGN

- + MECHANISM - AXIS® lock
- + BLADE STYLE - Reverse tanto
- + BLADE STEEL - CPM-S30V premium stainless steel (58-60 HRC)
- + HANDLE - Black milled G10 with stainless steel liners
- + BLADE LENGTH - 3.40" (8.64cm)
- + BLADE THICKNESS - 0.115" (2.92mm)
- + OPEN - 7.87" (19.99cm)
- + CLOSED - 4.47" (11.35cm)
- + WEIGHT - 2.65oz (75.13g)
- + HANDLE THICKNESS - 0.44" (11.18mm)

Yours, for life.



EDC



OUTDOOR

# 940-1

Highly regarded as one of the most quintessential EDCs of all time



CONFIGURATIONS/MSRP  
945 | | \$230

### Mini Osborne

945 OSBORNE DESIGN

- + MECHANISM - AXIS® lock
- + BLADE STYLE - Reverse tanto
- + BLADE STEEL - CPM-S30V premium stainless steel (58-60 HRC)
- + HANDLE - Osborne Green anodized 6061-T6 billet aluminum with stainless steel liners
- + BLADE LENGTH - 2.92" (7.42cm)
- + BLADE THICKNESS - 0.104" (2.64mm)
- + OPEN - 6.76" (17.17cm)
- + CLOSED - 3.84" (9.75cm)
- + WEIGHT - 2.00oz (56.70g)
- + HANDLE THICKNESS - 0.43" (10.92mm)



CONFIGURATIONS/MSRP  
535GRY-1 | | GRAY | \$190

### Bugout®

535GRY-1

- + MECHANISM - AXIS® lock
- + BLADE STYLE - Drop-point
- + BLADE STEEL - CPM-S30V (58-60 HRC)
- + HANDLE - Textured Ranger Green Grivory® w/ stainless steel liners
- + BLADE LENGTH - 3.24" (8.23cm)
- + BLADE THICKNESS - 0.090" (2.29mm)
- + OPEN - 7.46" (18.95cm)
- + CLOSED - 4.22" (10.72cm)
- + WEIGHT - 1.80oz (51.03g)
- + HANDLE THICKNESS - 0.42" (10.67mm)



CONFIGURATIONS/MSRP  
945BK-1 | | BLACK | \$230

### Mini Osborne

945BK-1 OSBORNE DESIGN

- + MECHANISM - AXIS® lock
- + BLADE STYLE - Reverse tanto
- + BLADE STEEL - CPM-S30V premium stainless steel (58-60 HRC)
- + HANDLE - Black G10/Blue base layer with stainless steel liners
- + BLADE LENGTH - 2.92" (7.42cm)
- + BLADE THICKNESS - 0.104" (2.64mm)
- + OPEN - 6.76" (17.17cm)
- + CLOSED - 3.84" (9.75cm)
- + WEIGHT - 2.19oz (62.09g)
- + HANDLE THICKNESS - 0.41" (10.41mm)



CONFIGURATIONS/MSRP  
535BK-2 | | BLACK | \$190

### Bugout®

535BK-2

- + MECHANISM - AXIS® lock
- + BLADE STYLE - Drop-point
- + BLADE STEEL - CPM-S30V premium stainless steel (58-60HRC)
- + HANDLE - Textured Black CF-Elite® w/ stainless steel liners
- + BLADE LENGTH - 3.24" (8.23cm)
- + BLADE THICKNESS - 0.090" (2.29mm)
- + OPEN - 7.46" (18.95cm)
- + CLOSED - 4.22" (10.72cm)
- + WEIGHT - 1.80oz (51.03g)
- + HANDLE THICKNESS - 0.42" (10.67mm)



SCAN FOR MORE



CONFIGURATIONS/MSRP  
535 | | \$180

### Bugout®

535

- + MECHANISM - AXIS® lock
- + BLADE STYLE - Drop-point
- + BLADE STEEL - CPM-S30V (58-60 HRC)
- + HANDLE - Textured Blue Grivory® w/ stainless steel liners
- + BLADE LENGTH - 3.24" (8.23cm)
- + BLADE THICKNESS - 0.090" (2.29mm)
- + OPEN - 7.46" (18.95cm)
- + CLOSED - 4.22" (10.72cm)
- + WEIGHT - 1.80oz (51.03g)
- + HANDLE THICKNESS - 0.42" (10.67mm)



CONFIGURATIONS/MSRP  
535-3 | | \$330

### Bugout®

535-3

- + MECHANISM - AXIS® lock
- + BLADE STYLE - Drop-point
- + BLADE STEEL - CPM-S90V premium stainless steel (59-61 HRC)
- + HANDLE - Carbon fiber w/ stainless steel liners
- + BLADE LENGTH - 3.24" (8.23cm)
- + BLADE THICKNESS - 0.090" (2.29mm)
- + OPEN - 7.46" (18.95cm)
- + CLOSED - 4.22" (10.72cm)
- + WEIGHT - 2.02oz (57.27g)
- + HANDLE THICKNESS - 0.41" (10.41mm)



## EVERYDAY ESSENTIALS

For those of us mindful about self-expression and style, the things we carry in our pocket say a lot. Our EDC selects are a quiet, humble way to align personal swag with everyday necessity shaped by the things we love, the work we do, and the places we live. Our EDC go-to knife doesn't need to be in your face because we picked it, we trust it, we like it, and we know it's cool—we don't need anyone else's validation.



# MY CITY, MY BUGOUT<sup>®</sup>





Location - Williamsburg, Brooklyn

# ALWAYS HANDPAINT



**535**  
**BUGOUT®**  
Versatility & Style

For the artists at Colossal Media, the Bugout® is a unique prospect: a source of creative inspiration, an outlet for personal expression, and a tool for practical application, built from the ground up for everyday carry. By pairing lightweight materials like Grivory, Carbon Fiber, and Aluminum with best-in-class steels like S30V, M390, and S90V, the Bugout® presents each of the Colossal creatives with a variant to match their **Your. Quality.** Each one proven to be a slim, ergonomic, and dependable pocketknife for use on and off the jobsite.



**MY CITY,  
MY BUGOUT®**

In 2022, Benchmade took over NYC with a billboard campaign featuring the Bugout® in partnership with Colossal, a global leader in hand-painted murals. This billboard sets the stage for the largest national campaign around Bugout® in the history of the brand. And while this is still the Bugout® you know and love, we are here to prove that we are just getting started and this knife has so many more stories to be told! Be on the look out for elevated tools and merchandising for your store to join in this national Bugout® campaign for 2023.



**CONFIGURATIONS/MSRP**

535BK-4 | BLACK | \$300

### Bugout®

535BK-4

- + **MECHANISM** - AXIS® lock
- + **BLADE STYLE** - Drop-point
- + **BLADE STEEL** - M390 premium stainless steel (58-61 HRC)
- + **HANDLE** - Gray anodized 6061-T6 aluminum w/ milled pattern and stainless steel liners
- + **BLADE LENGTH** - 3.24" (8.23cm)
- + **BLADE THICKNESS** - 0.090" (2.29mm)
- + **OPEN** - 7.46" (18.95cm)
- + **CLOSED** - 4.22" (10.72cm)
- + **WEIGHT** - 2.50oz (70.87g)
- + **HANDLE THICKNESS** - 0.41" (10.41mm)



**CONFIGURATIONS/MSRP**

533BK-2 | BLACK | \$180

### Mini Bugout®

533BK-2

- + **MECHANISM** - AXIS® lock
- + **BLADE STYLE** - Drop-point
- + **BLADE STEEL** - CPM-S30V premium stainless steel (58-60HRC)
- + **HANDLE** - Textured Black CF-Elite® w/ stainless steel liners
- + **BLADE LENGTH** - 2.82" (7.16cm)
- + **BLADE THICKNESS** - 0.090" (2.29mm)
- + **OPEN** - 6.49" (16.48cm)
- + **CLOSED** - 3.70" (9.41cm)
- + **WEIGHT** - 1.50oz (42.52g)
- + **HANDLE THICKNESS** - 0.41" (10.46mm)



**CONFIGURATIONS/MSRP**

533 | \$170

### Mini Bugout®

533

- + **MECHANISM** - AXIS® lock
- + **BLADE STYLE** - Drop-point
- + **BLADE STEEL** - CPM-S30V premium stainless steel (58-60HRC)
- + **HANDLE** - Textured Orange Grivory® w/ stainless steel liners
- + **BLADE LENGTH** - 2.82" (7.16cm)
- + **BLADE THICKNESS** - 0.090" (2.29mm)
- + **OPEN** - 6.49" (16.48cm)
- + **CLOSED** - 3.70" (9.40cm)
- + **WEIGHT** - 1.50oz (42.52g)
- + **HANDLE THICKNESS** - 0.41" (10.41mm)



**CONFIGURATIONS/MSRP**

533-3 | \$320

### Mini Bugout®

533-3

- + **MECHANISM** - AXIS® lock
- + **BLADE STYLE** - Drop-point
- + **BLADE STEEL** - CPM-S90V premium stainless steel (59-61HRC)
- + **HANDLE** - Carbon fiber w/ stainless steel liners
- + **BLADE LENGTH** - 2.82" (7.16cm)
- + **BLADE THICKNESS** - 0.090" (2.29mm)
- + **OPEN** - 6.49" (16.48cm)
- + **CLOSED** - 3.70" (9.40cm)
- + **WEIGHT** - 1.62oz (45.93g)
- + **HANDLE THICKNESS** - 0.41" (10.41mm)



**CONFIGURATIONS/MSRP**

533BK-1 | BLACK | \$180

### Mini Bugout®

533BK-1

- + **MECHANISM** - AXIS® lock
- + **BLADE STYLE** - Drop-point
- + **BLADE STEEL** - CPM-S30V premium stainless steel (58-60HRC)
- + **HANDLE** - Textured White Grivory® w/ stainless steel liners
- + **BLADE LENGTH** - 2.82" (7.16cm)
- + **BLADE THICKNESS** - 0.090" (2.29mm)
- + **OPEN** - 6.49" (16.48cm)
- + **CLOSED** - 3.70" (9.40cm)
- + **WEIGHT** - 1.50oz (42.52g)
- + **HANDLE THICKNESS** - 0.41" (10.41mm)



**CONFIGURATIONS/MSRP**

550-S30V | \$160

### Griptilian®

550-S30V PARDUE DESIGN

- + **MECHANISM** - AXIS® lock
- + **BLADE STYLE** - Sheepsfoot
- + **BLADE STEEL** - CPM-S30V premium stainless steel (58-60 HRC)
- + **HANDLE** - Textured Black Grivory® with stainless steel liners
- + **BLADE LENGTH** - 3.45" (8.76cm)
- + **BLADE THICKNESS** - 0.115" (2.92mm)
- + **OPEN** - 8.07" (20.50cm)
- + **CLOSED** - 4.62" (11.73cm)
- + **WEIGHT** - 3.79oz (107.44g)
- + **HANDLE THICKNESS** - 0.64" (16.26mm)



EDC



OUTDOOR



TACTICAL



CONFIGURATIONS/MSRP

551-S30V | | \$160

### Griptilian®

551-S30V PARDUE DESIGN

- + **MECHANISM** - AXIS® lock
- + **BLADE STYLE** - Drop-point
- + **BLADE STEEL** - CPM-S30V premium stainless steel (58-60 HRC)
- + **HANDLE** - Textured Black Grivory® with stainless steel liners
- + **BLADE LENGTH** - 3.45" (8.76cm)
- + **BLADE THICKNESS** - 0.115" (2.92mm)
- + **OPEN** - 8.07" (20.50cm)
- + **CLOSED** - 4.62" (11.73cm)
- + **WEIGHT** - 3.88oz (110.0g)
- + **HANDLE THICKNESS** - 0.64" (16.26mm)



EDC



OUTDOOR



CONFIGURATIONS/MSRP

580 | | \$200

### Barrage®

580 OSBORNE DESIGN

- + **MECHANISM** - AXIS® Assist with integrated safety
- + **BLADE STYLE** - Drop-point
- + **BLADE STEEL** - 154CM stainless steel (58-61 HRC)
- + **HANDLE** - Black Valox® with stainless steel liners
- + **BLADE LENGTH** - 3.66" (9.30cm)
- + **BLADE THICKNESS** - 0.121" (3.07mm)
- + **OPEN** - 8.45" (21.46cm)
- + **CLOSED** - 4.79" (12.17cm)
- + **WEIGHT** - 4.31oz (122.19g)
- + **HANDLE THICKNESS** - 0.65" (16.51mm)



EDC



OUTDOOR



CONFIGURATIONS/MSRP

555-S30V | | \$150

### Mini Griptilian®

555-S30V PARDUE DESIGN

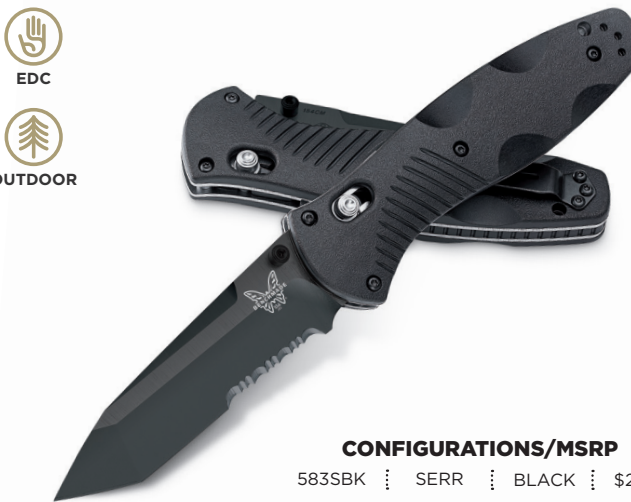
- + **MECHANISM** - AXIS® lock
- + **BLADE STYLE** - Sheepsfoot
- + **BLADE STEEL** - CPM-S30V premium stainless steel (58-60 HRC)
- + **HANDLE** - Textured Black Grivory® with stainless steel liners
- + **BLADE LENGTH** - 2.91" (7.39cm)
- + **BLADE THICKNESS** - 0.100" (2.54mm)
- + **OPEN** - 6.78" (17.22cm)
- + **CLOSED** - 3.87" (9.83cm)
- + **WEIGHT** - 2.68oz (75.98g)
- + **HANDLE THICKNESS** - 0.51" (12.95mm)



EDC



OUTDOOR



CONFIGURATIONS/MSRP

583SBK | SERR | BLACK | \$220

### Barrage®

583SBK OSBORNE DESIGN

- + **MECHANISM** - AXIS® Assist with integrated safety
- + **BLADE STYLE** - Tanto
- + **BLADE STEEL** - 154CM stainless steel (58-61 HRC)
- + **HANDLE** - Black Valox® with stainless steel liners
- + **BLADE LENGTH** - 3.66" (9.30cm)
- + **BLADE THICKNESS** - 0.121" (3.07mm)
- + **OPEN** - 8.45" (21.46cm)
- + **CLOSED** - 4.79" (12.17cm)
- + **WEIGHT** - 4.51oz (127.86g)
- + **HANDLE THICKNESS** - 0.65" (16.51mm)



EDC



OUTDOOR



CONFIGURATIONS/MSRP

556-S30V | | \$150

### Mini Griptilian®

556-S30V PARDUE DESIGN

- + **MECHANISM** - AXIS® lock
- + **BLADE STYLE** - Drop-point
- + **BLADE STEEL** - CPM-S30V premium stainless steel (58-60 HRC)
- + **HANDLE** - Textured Grivory® with stainless steel liners.
- + **BLADE LENGTH** - 2.91" (7.39cm)
- + **BLADE THICKNESS** - 0.100" (2.54mm)
- + **OPEN** - 6.78" (17.22cm)
- + **CLOSED** - 3.87" (9.83cm)
- + **WEIGHT** - 2.81oz (79.66g)
- + **HANDLE THICKNESS** - 0.51" (12.95mm)



EDC



OUTDOOR



CONFIGURATIONS/MSRP

585 | | \$190

### Mini Barrage®

585 OSBORNE DESIGN

- + **MECHANISM** - AXIS® Assist with integrated safety
- + **BLADE STYLE** - Drop-point
- + **BLADE STEEL** - 154CM stainless steel (58-61 HRC)
- + **HANDLE** - Black Valox® with stainless steel liners
- + **BLADE LENGTH** - 2.91" (7.39cm)
- + **BLADE THICKNESS** - 0.100" (2.54mm)
- + **OPEN** - 6.91" (17.55cm)
- + **CLOSED** - 4.00" (10.16cm)
- + **WEIGHT** - 3.40oz (96.39g)
- + **HANDLE THICKNESS** - 0.57" (14.48mm)





SCAN FOR MORE



OUTDOOR



**CONFIGURATIONS/MSRP**

317-1 | | \$275

## Weekender®

317-1

- + **MECHANISM** - Slip-joint
- + **BLADE STYLE** - Clip-point/ Utility drop-point
- + **BLADE STEEL** - CPM-S30V premium stainless steel (58-60HRC)
- + **HANDLE** - OD canvas micarta w/ orange aluminum decorative pivot rings
- + **EXTRA** - Bottle opener
- + **BLADE LENGTH** - 2.97" (7.54cm) /1.97" (5.00cm)
- + **BLADE THICKNESS** - 0.090" (2.29mm)
- + **OPEN** - 7.05/6.05 (17.91cm/15.37cm)
- + **CLOSED** - 4.08" (10.36cm)
- + **WEIGHT** - 2.28oz (64.64g)
- + **HANDLE THICKNESS** - 0.40" (10.16mm)



SCAN FOR MORE



**CONFIGURATIONS/MSRP**

565-1 | | \$340

## Mini Freek®

565-1

- + **MECHANISM** - AXIS® lock
- + **BLADE STYLE** - Drop-point
- + **BLADE STEEL** - CPM-S90V premium stainless steel (59-61 HRC)
- + **HANDLE** - Carbon fiber with stainless steel liners
- + **BLADE LENGTH** - 3.00" (7.62cm)
- + **BLADE THICKNESS** - 0.104" (2.64mm)
- + **OPEN** - 7.05" (17.91cm)
- + **CLOSED** - 4.05" (10.29cm)
- + **WEIGHT** - 2.74oz (77.68g)
- + **HANDLE THICKNESS** - 0.55" (13.97mm)



OUTDOOR



**CONFIGURATIONS/MSRP**

317 | | \$275

## Weekender®

317

- + **MECHANISM** - Slip-joint
- + **BLADE STYLE** - Clip-point/ Utility drop-point
- + **BLADE STEEL** - CPM-S30V premium stainless steel (58-60HRC)
- + **HANDLE** - Cool Gray G10 w/ OD aluminum decorative pivot rings
- + **EXTRA** - Bottle opener
- + **BLADE LENGTH** - 2.97" (7.54cm) /1.97" (5.00cm)
- + **BLADE THICKNESS** - 0.090" (2.29mm)
- + **OPEN** - 7.05/6.05 (17.91cm/15.37cm)
- + **CLOSED** - 4.08" (10.36cm)
- + **WEIGHT** - 2.28oz (64.64g)
- + **HANDLE THICKNESS** - 0.40" (10.16mm)



**CONFIGURATIONS/MSRP**

495 | | \$310

## Vector®

495

- + **MECHANISM** - AXIS® Assist flipper with integrated safety
- + **BLADE STYLE** - Spear-point
- + **BLADE STEEL** - CPM-S30V premium stainless steel (58-60 HRC)
- + **HANDLE** - Black contoured and textured G10 with stainless steel liners
- + **BLADE LENGTH** - 3.60" (9.14cm)
- + **BLADE THICKNESS** - 0.100 (2.54mm)
- + **OPEN** - 8.42" (21.39cm)
- + **CLOSED** - 4.82" (12.24cm)
- + **WEIGHT** - 4.11oz (116.52g)
- + **HANDLE THICKNESS** - 0.60" (15.24mm)



SCAN FOR MORE



OUTDOOR



**CONFIGURATIONS/MSRP**

560BK-1 | | BLACK | \$280

## Freek®

560BK-1

- + **MECHANISM** - AXIS® lock
- + **BLADE STYLE** - Drop-point
- + **BLADE STEEL** - CPM-M4 super steel (62-64 HRC)
- + **HANDLE** - Black and Gray textured G10 with red base layer and stainless steel liners
- + **BLADE LENGTH** - 3.60" (9.14cm)
- + **BLADE THICKNESS** - 0.114" (2.90mm)
- + **OPEN** - 8.46" (21.49cm)
- + **CLOSED** - 4.86" (12.34cm)
- + **WEIGHT** - 4.30oz (121.90g)
- + **HANDLE THICKNESS** - 0.62" (15.75mm)



**CONFIGURATIONS/MSRP**

490 | | \$300

## Arcane®

490

- + **MECHANISM** - AXIS® Assist flipper with integrated safety
- + **BLADE STYLE** - Drop-point
- + **BLADE STEEL** - CPM-S90V premium stainless steel (59-61 HRC)
- + **HANDLE** - Black anodized 7075-T6 billet aluminum
- + **BLADE LENGTH** - 3.20" (8.13cm)
- + **BLADE THICKNESS** - 0.090" (2.29mm)
- + **OPEN** - 7.72" (19.61cm)
- + **CLOSED** - 4.52" (11.48cm)
- + **WEIGHT** - 2.88oz (81.65g)
- + **HANDLE THICKNESS** - 0.48" (12.19mm)





EDC



CONFIGURATIONS/MSRP  
85 | | \$750

## Billet Bali-Song®

85

- + **MECHANISM** - Bali-Song® with magnetic latch-lock
- + **BLADE STYLE** - Drop-point
- + **BLADE STEEL** - CPM-S30V premium stainless steel (58-60 HRC)
- + **HANDLE** - 6Al-4V Titanium
- + **SHEATH** - Black Elastic and Hypalon
- + **BLADE LENGTH** - 4.50" (11.43cm)
- + **BLADE THICKNESS** - 0.124" (3.15mm)
- + **OPEN** - 10.00" (25.40cm)
- + **CLOSED** - 5.50" (13.97cm)
- + **WEIGHT** - 5.29oz (149.97g)
- + **HANDLE THICKNESS** - 0.46" (11.68mm)
- + **SHEATH WEIGHT** - 0.66oz (18.71g)



SURVIVAL



OUTDOOR



CONFIGURATIONS/MSRP  
162 | | \$300

## Bushcrafter

162 SHANE SIBERT

- + **MECHANISM** - Fixed blade
- + **BLADE STYLE** - Drop-point
- + **BLADE STEEL** - CPM-S30V premium stainless steel (58-60 HRC)
- + **HANDLE** - Hand-blended green contoured G10 with a red base layer
- + **SHEATH** - Brown full-grain leather with belt loop and D-ring
- + **BLADE LENGTH** - 4.40" (11.18cm)
- + **BLADE THICKNESS** - 0.164" (4.17mm)
- + **OPEN** - 9.15" (23.24cm)
- + **WEIGHT** - 7.72oz (218.86g)
- + **HANDLE THICKNESS** - 0.92" (23.37mm)
- + **SHEATH WEIGHT** - 2.70oz (76.54g)



SCAN FOR MORE



OUTDOOR



SURVIVAL



CONFIGURATIONS/MSRP  
539GY | | \$310

## ANONIMUS®

539GY

- + **MECHANISM** - Fixed blade
- + **BLADE STYLE** - Drop-point
- + **BLADE STEEL** - CPM-CruWear® super strong tool steel (62-64HRC)
- + **SHEATH** - Boltaron® sheath with ferro rod loop
- + **HANDLE** - OD Green G10
- + **BLADE LENGTH** - 5.00" (12.70cm)
- + **BLADE THICKNESS** - 0.114" (2.90mm)
- + **OPEN** - 9.83" (24.97cm)
- + **WEIGHT** - 5.94oz (168.40g)
- + **HANDLE THICKNESS** - 0.68" (17.27mm)
- + **SHEATH WEIGHT** - 2.56oz (72.57g)



OUTDOOR



SURVIVAL



CONFIGURATIONS/MSRP  
200 | | \$180

## Puukko

200

- + **MECHANISM** - Fixed blade
- + **BLADE STYLE** - Drop-point
- + **BLADE STEEL** - CPM-3V super tough tool steel (60-62 HRC)
- + **HANDLE** - Textured Ranger Green Santoprene®
- + **SHEATH** - Black leather with ferro rod loop and dangler
- + **BLADE LENGTH** - 3.75" (9.53cm)
- + **BLADE THICKNESS** - 0.140" (3.56mm)
- + **OPEN** - 8.25" (20.96cm)
- + **WEIGHT** - 4.51oz (62.09g)
- + **HANDLE THICKNESS** - 0.80" (20.32mm)
- + **SHEATH WEIGHT** - 2.65oz (75.13g)



Yours, for life.



OUTDOOR



SURVIVAL



CONFIGURATIONS/MSRP  
202 | | \$200

## Leuku

202

- + **MECHANISM** - Fixed blade
- + **BLADE STYLE** - Drop-point
- + **BLADE STEEL** - CPM-3V super tough tool steel (60-62 HRC)
- + **HANDLE** - Textured Ranger Green Santoprene®
- + **SHEATH** - Black leather with ferro rod loop and dangler
- + **BLADE LENGTH** - 5.19" (13.18cm)
- + **BLADE THICKNESS** - 0.140" (3.56mm)
- + **OPEN** - 9.69" (24.61cm)
- + **WEIGHT** - 5.31oz (150.54g)
- + **HANDLE THICKNESS** - 0.80" (20.32mm)
- + **SHEATH WEIGHT** - 3.04oz (86.18g)



# HUNT

GAME DAY READY



# A CUT ABOVE

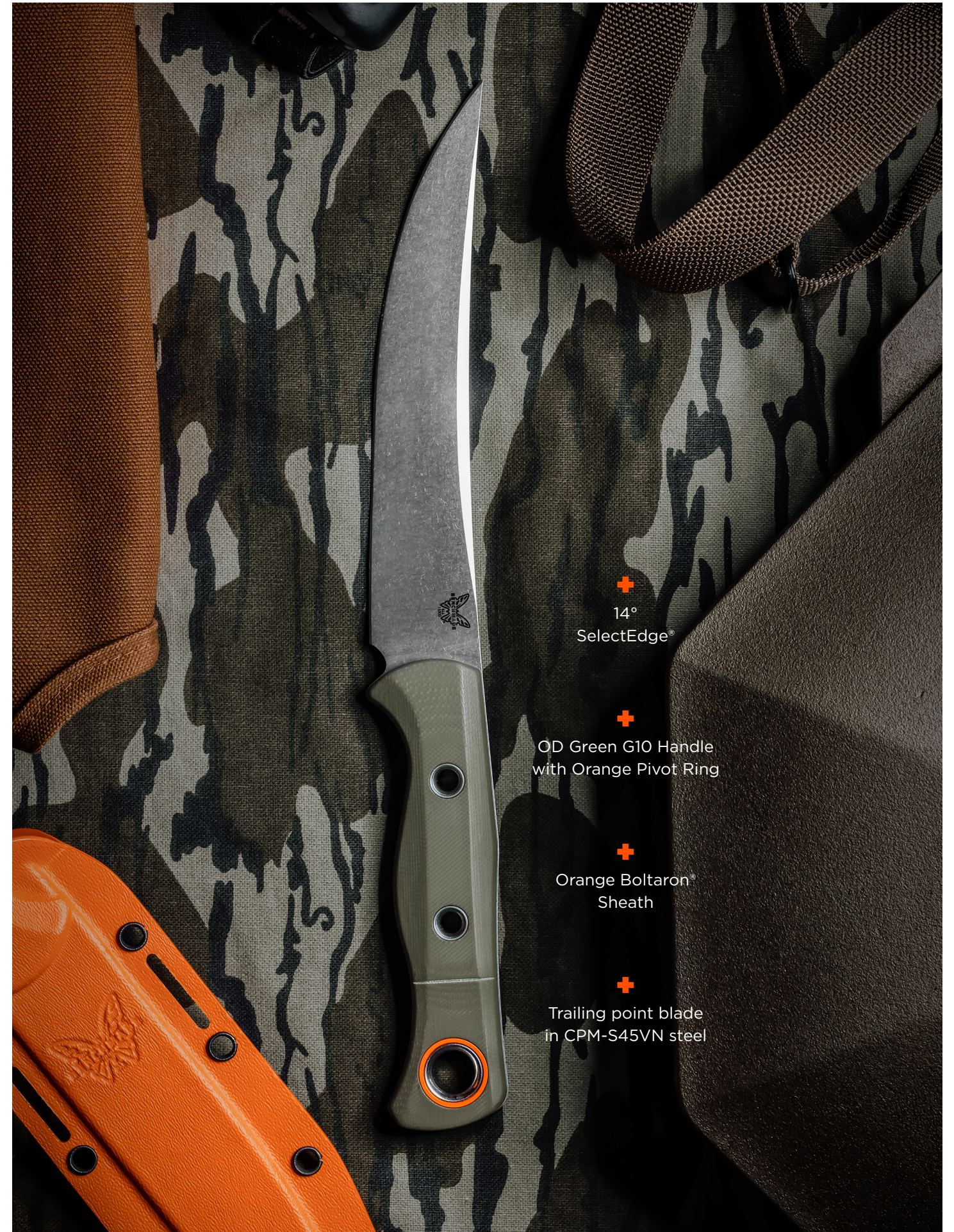
## 15500-3 MEATCRAFTER®

From the First Slice to the Last



With the 15500-3 Meatcrafter® in your quiver, you can move from the field to the BBQ pit and the truck bed to the butcher's block without missing a beat. It's a hybrid hunting fixed blade knife that brings a distinctive edge to the table.

Location - Kaniksu National Forest



+ 14° SelectEdge®

+ OD Green G10 Handle with Orange Pivot Ring

+ Orange Boltaron® Sheath

+ Trailing point blade in CPM-S45VN steel



SCAN FOR MORE



**CONFIGURATIONS/MSRP**

15500 | | \$200

### Meatcrafter®

15500

- + **MECHANISM** - Fixed blade
- + **BLADE STYLE** - Trailing Point featuring 14° SelectEdge®
- + **BLADE STEEL** - CPM-154 stainless steel (58-61HRC)
- + **HANDLE** - Orange Santoprene®
- + **SHEATH** - Black/Orange Boltaron®
- + **BLADE LENGTH** - 6.09" (15.47cm)
- + **BLADE THICKNESS** - 0.090" (2.29mm)
- + **OPEN** - 11.08" (28.14cm)
- + **WEIGHT** - 3.24oz (91.85g)
- + **HANDLE THICKNESS** - 0.67" (17.02mm)
- + **SHEATH WEIGHT** - 1.77oz (50.18g)



SCAN FOR MORE



**CONFIGURATIONS/MSRP**

15700 | | \$200

### Flyway™

15700

- + **MECHANISM** - Fixed blade
- + **BLADE STYLE** - Straight back drop-point featuring 14° SelectEdge®
- + **BLADE STEEL** - CPM-154 wear resistant stainless steel (58-61HRC)
- + **HANDLE** - Carbon fiber with stainless steel liners
- + **SHEATH** - Orange/Black Boltraron®
- + **BLADE LENGTH** - 3.00" (7.62cm)
- + **BLADE THICKNESS** - 0.090" (2.29mm)
- + **OPEN** - 7.05" (17.91cm)
- + **CLOSED** - 4.05" (10.29cm)
- + **WEIGHT** - 2.74oz (77.68g)
- + **HANDLE THICKNESS** - 0.55" (13.97mm)
- + **SHEATH WEIGHT** - 2.15oz (60.95g)



**CONFIGURATIONS/MSRP**

15500-3 | | \$350

### Meatcrafter®

15500 - 3

- + **MECHANISM** - Fixed Blade
- + **BLADE STYLE** - Trailing Point featuring 14° SelectEdge®
- + **BLADE STEEL** - CPM-S45VN premium stainless steel (60-62HRC)
- + **HANDLE** - OD Green G10
- + **SHEATH** - Dual Orange Boltraron®
- + **BLADE LENGTH** - 6.08" (15.44cm)
- + **BLADE THICKNESS** - 0.090" (2.29cm)
- + **OPEN** - 11.06" (28.09cm)
- + **WEIGHT** - 5.13oz (145.43g)
- + **HANDLE THICKNESS** - 0.55" (13.97mm)
- + **SHEATH WEIGHT** - 2.15oz (60.95g)



**CONFIGURATIONS/MSRP**

15600OR | | \$420

### Raghorn™

15600OR

- + **MECHANISM** - Fixed blade
- + **BLADE STYLE** - Drop-point featuring 14° SelectEdge®
- + **BLADE STEEL** - Orange CPM-CruWear® super strong tool steel (63-65HRC)
- + **HANDLE** - Carbon Fiber
- + **SHEATH** - Orange/Black Boltraron®
- + **BLADE LENGTH** - 4.00" (10.16cm)
- + **BLADE THICKNESS** - 0.105" (2.67mm)
- + **OPEN** - 8.90" (22.61cm)
- + **WEIGHT** - 3.56oz (100.92g)
- + **HANDLE THICKNESS** - 0.64" (16.26mm)
- + **SHEATH WEIGHT** - 1.60oz (21.55g)



**CONFIGURATIONS/MSRP**

15500OR-2 | | \$450

### Meatcrafter®

15500OR - 2

- + **MECHANISM** - Fixed Blade
- + **BLADE STYLE** - Trailing Point featuring 14° SelectEdge®
- + **BLADE STEEL** - Orange CPM-S45VN premium stainless steel (60-62HRC)
- + **HANDLE** - Carbon Fiber
- + **SHEATH** - Orange/Black Boltraron®
- + **BLADE LENGTH** - 6.08" (15.44cm)
- + **BLADE THICKNESS** - 0.090" (2.29cm)
- + **OPEN** - 11.06" (28.09cm)
- + **WEIGHT** - 4.52oz (128.14g)
- + **HANDLE THICKNESS** - 0.55" (13.97mm)
- + **SHEATH WEIGHT** - 2.15oz (60.95g)



SCAN FOR MORE



**CONFIGURATIONS/MSRP**

15535 | | \$200

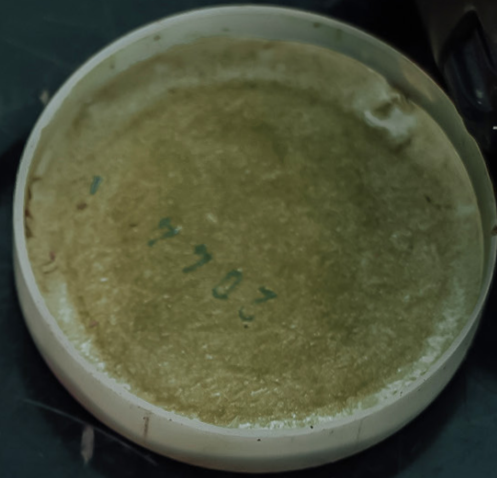
### Taggedout™

15535

- + **MECHANISM** - AXIS® Lock
- + **BLADE STYLE** - Clip-point featuring 17° SelectEdge®
- + **BLADE STEEL** - CPM-154 wear resistant stainless steel (58-61HRC)
- + **HANDLE** - Orange Grivory® with orange anodized aluminum barrel spacers
- + **BLADE LENGTH** - 3.50" (8.89cm)
- + **BLADE THICKNESS** - 0.090" (2.29mm)
- + **OPEN** - 8.13" (20.65cm)
- + **CLOSED** - 4.63" (11.76cm)
- + **WEIGHT** - 2.10oz (59.53g)
- + **HANDLE THICKNESS** - 0.49" (12.45mm)







## 15535 TAGGEDOUT™

An all-weather hunting folder built to handle everything the hunt can, and will, throw at you.



17°  
SelectEdge®



Clip-Point Blade in  
CPM-154 Steel



Textured orange  
Grivory® handle

# IN-THE-FIELD-UTILITY



# DURRELL SMITH

**15535  
TAGGEDOUT™**  
Modernize Your Hunt Kit



He's a husband, father, artist, bird dog trainer, and guide to Georgia's renowned upland game scene. He's comfortable on the sidewalks of downtown Atlanta and in the brambles of South Georgia's woods. Durrell Smith has layers. The guy's interests meander from found art in the field to fine art hanging in a gallery, from Star Wars to Bob Whites, from street skateboarding to Ray Charles. Sitting in the center of it all—his heart, rhythm, and drumbeat—are three things: dogs, art, and nature.



SCAN TO WATCH FILM

Location - Jeffersonville, Georgia



“ Where many knives feel like they're not enough, lacking in either form or function, the Taggedout™ feels like exactly what I need in a contemporary hunting and working knife. ”

- Durrell Smith / The Sporting Life Notebook



**CONFIGURATIONS/MSRP**  
15006 | | \$180

## Steep Country

15006

- + **MECHANISM** - Fixed blade
- + **BLADE STYLE** - Drop-point
- + **BLADE STEEL** - CPM-S30V premium stainless steel (58-60HRC)
- + **HANDLE** - Orange Santoprene®
- + **SHEATH** - Black/Orange Boltaron®
- + **BLADE LENGTH** - 3.54" (8.99cm)
- + **BLADE THICKNESS** - 0.121" (3.07mm)
- + **OPEN** - 7.76" (19.71cm)
- + **WEIGHT** - 3.00oz (85.04g)
- + **HANDLE THICKNESS** - 0.58" (14.73mm)
- + **SHEATH WEIGHT** - 1.10oz (31.18g)



**CONFIGURATIONS/MSRP**  
15002-1 | | \$280

## Saddle Mtn Skinner

15002-1

- + **MECHANISM** - Fixed blade
- + **BLADE STYLE** - Drop-point featuring 14° SelectEdge®
- + **BLADE STEEL** - CPM-S90V premium stainless steel (59-61 HRC)
- + **HANDLE** - Tri-color Richlite with Orange G10 base layer
- + **SHEATH** - Black/Orange Boltaron®
- + **BLADE LENGTH** - 4.20" (10.67cm)
- + **BLADE THICKNESS** - 0.120" (3.05mm)
- + **OPEN** - 8.70" (22.10cm)
- + **WEIGHT** - 4.30oz (121.90g)
- + **HANDLE THICKNESS** - 0.66" (16.76mm)
- + **SHEATH WEIGHT** - 1.38oz (39.12g)



**CONFIGURATIONS/MSRP**  
15017-1 | | \$260

## Hidden Canyon Hunter

15017-1

- + **MECHANISM** - Fixed blade
- + **BLADE STYLE** - Drop-point featuring 14° SelectEdge®
- + **BLADE STEEL** - CPM-S90V premium stainless steel (59-61 HRC)
- + **HANDLE** - Tri-color Richlite with Orange G10 base layer
- + **SHEATH** - Black/Orange Boltaron®
- + **BLADE LENGTH** - 2.79" (7.09cm)
- + **BLADE THICKNESS** - 0.120" (3.05mm)
- + **OPEN** - 6.42" (16.31cm)
- + **WEIGHT** - 3.11oz (88.17g)
- + **HANDLE THICKNESS** - 0.55" (13.97mm)
- + **SHEATH WEIGHT** - 0.99oz (28.07g)



**CONFIGURATIONS/MSRP**  
15002 | | \$220

## Saddle Mtn Skinner

15002

- + **MECHANISM** - Fixed blade
- + **BLADE STYLE** - Drop-point
- + **BLADE STEEL** - CPM-S30V premium stainless steel (58-60HRC)
- + **HANDLE** - Stabilized wood
- + **SHEATH** - Leather sheath with belt loop and snap retention strap
- + **BLADE LENGTH** - 4.20" (10.67cm)
- + **BLADE THICKNESS** - 0.120" (3.05mm)
- + **OPEN** - 8.70" (22.10cm)
- + **WEIGHT** - 4.30oz (121.90g)
- + **HANDLE THICKNESS** - 0.66" (16.76mm)
- + **SHEATH WEIGHT** - 2.46oz (69.74g)



**CONFIGURATIONS/MSRP**  
15017 | | \$200

## Hidden Canyon Hunter

15017

- + **MECHANISM** - Fixed blade
- + **BLADE STYLE** - Drop-point
- + **BLADE STEEL** - CPM-S30V premium stainless steel (58-60 HRC)
- + **HANDLE** - Stabilized wood
- + **SHEATH** - Leather sheath with belt loop and snap retention strap
- + **BLADE LENGTH** - 2.79" (7.09cm)
- + **BLADE THICKNESS** - 0.120" (3.05mm)
- + **OPEN** - 6.42" (16.31cm)
- + **WEIGHT** - 2.81oz (79.66g)
- + **HANDLE THICKNESS** - 0.55" (13.97mm)
- + **SHEATH WEIGHT** - 2.01oz (57.10g)



**CONFIGURATIONS/MSRP**  
15004 | | \$230

## Saddle Mtn Skinner

15004

- + **MECHANISM** - Fixed blade
- + **BLADE STYLE** - Drop-point with gut hook
- + **BLADE STEEL** - CPM-S30V premium stainless steel (58-60HRC)
- + **HANDLE** - Stabilized wood
- + **SHEATH** - Leather sheath with belt loop and snap retention strap
- + **BLADE LENGTH** - 4.20" (10.67cm)
- + **BLADE THICKNESS** - 0.120" (3.05mm)
- + **OPEN** - 8.70" (22.10cm)
- + **WEIGHT** - 4.30oz (121.90g)
- + **HANDLE THICKNESS** - 0.66" (16.76mm)
- + **SHEATH WEIGHT** - 2.63oz (74.56g)
- + **HOOK OPENING** - 0.38" (9.65mm)





SCAN FOR MORE



**CONFIGURATIONS/MSRP**

15031-2 | | \$220

## North Fork

15031-2

- ✦ **MECHANISM** - AXIS® lock
- ✦ **BLADE STYLE** - Drop-point
- ✦ **BLADE STEEL** - CPM-S30V premium stainless steel (58-60 HRC)
- ✦ **HANDLE** - Stabilized wood
- ✦ **BLADE LENGTH** - 2.97" (7.54cm)
- ✦ **BLADE THICKNESS** - 0.114" (2.90mm)
- ✦ **OPEN** - 6.87" (17.45cm)
- ✦ **CLOSED** - 3.90" (9.91cm)
- ✦ **WEIGHT** - 3.16oz (89.02g)
- ✦ **HANDLE THICKNESS** - 0.53" (13.46mm)



**CONFIGURATIONS/MSRP**

15060-2 | | \$250

## Grizzly Creek

15060-2

- ✦ **MECHANISM** - AXIS® lock
- ✦ **BLADE STYLE** - Drop-point with folding gut hook
- ✦ **BLADE STEEL** - CPM-S30V premium stainless steel (58-60 HRC)
- ✦ **HANDLE** - Stabilized wood with stainless steel liners
- ✦ **BLADE LENGTH** - 3.50" (8.89cm)
- ✦ **BLADE THICKNESS** - 0.124" (3.15mm)
- ✦ **OPEN** - 7.84" (19.91cm)
- ✦ **CLOSED** - 4.34" (11.02cm)
- ✦ **WEIGHT** - 4.76oz (134.94g)
- ✦ **HANDLE THICKNESS** - 0.55" (13.97mm)
- ✦ **HOOK OPENING** - 0.50" (12.70mm)



**CONFIGURATIONS/MSRP**

15080-2 | | \$320

## Crooked River

15080-2

- ✦ **MECHANISM** - AXIS® lock
- ✦ **BLADE STYLE** - Clip-point
- ✦ **BLADE STEEL** - CPM-S30V premium stainless steel (58-60 HRC)
- ✦ **HANDLE** - Contoured stabilized wood with anodized aluminum bolsters and stainless steel liners
- ✦ **BLADE LENGTH** - 4.00" (10.16cm)
- ✦ **BLADE THICKNESS** - 0.124" (3.15mm)
- ✦ **OPEN** - 9.30" (23.62cm)
- ✦ **CLOSED** - 5.33" (13.54cm)
- ✦ **WEIGHT** - 5.41oz (153.37g)
- ✦ **HANDLE THICKNESS** - 0.60" (15.24mm)

## Mini Crooked River

15085-2



SCAN FOR MORE



**CONFIGURATIONS/MSRP**

15085-2 | | \$300

- ✦ **MECHANISM** - AXIS® lock
- ✦ **BLADE STYLE** - Clip-point
- ✦ **BLADE STEEL** - CPM-S30V premium stainless steel (58-60 HRC)
- ✦ **HANDLE** - Contoured stabilized wood with anodized aluminum bolsters and stainless steel liners
- ✦ **BLADE LENGTH** - 3.40" (8.64cm)

- ✦ **BLADE THICKNESS** - 0.114" (2.90mm)
- ✦ **OPEN** - 7.89" (20.04cm)
- ✦ **CLOSED** - 4.50" (11.43cm)
- ✦ **WEIGHT** - 3.29oz (93.27g)
- ✦ **HANDLE THICKNESS** - 0.52" (13.21mm)





# BLACK CLASS

THERE ARE NO BOUNDARIES



CONFIGURATIONS/MSRP  
980SBK | SERR | BLACK | \$290

### Turret® 980SBK

- + MECHANISM - AXIS® lock
- + BLADE STYLE - Drop-point
- + BLADE STEEL - CPM-S30V premium stainless steel (58-60HRC)
- + HANDLE - OD G10 with stainless steel liners
- + BLADE LENGTH - 3.70" (9.40cm)
- + BLADE THICKNESS - 0.124" (3.15mm)
- + OPEN - 8.60" (21.84cm)
- + CLOSED - 4.90" (12.45cm)
- + WEIGHT - 5.81oz (164.71g)
- + HANDLE THICKNESS - 0.67" (17.02mm)

### Triage® 916SBK-ORG



CONFIGURATIONS/MSRP  
916SBK-ORG | SERR | BLACK | \$260

- + MECHANISM - AXIS® lock
- + BLADE STYLE - Opposing bevel with folding rescue hook
- + BLADE STEEL - N680 ultra stainless steel (57-59 HRC)
- + HANDLE - Textured Orange G10 with stainless steel liners
- + BLADE LENGTH - 3.40" (8.64cm)

- + HOOK OPENING - 0.50" (12.70mm)
- + BLADE THICKNESS - 0.124" (3.15mm)
- + OPEN - 8.25" (20.96cm)
- + CLOSED - 4.85" (12.32cm)
- + WEIGHT - 5.24oz (148.55g)
- + HANDLE THICKNESS - 0.45" (11.43mm)



CONFIGURATIONS/MSRP  
916SBK | SERR | BLACK | \$260

### Triage® 916SBK

- + MECHANISM - AXIS® lock
- + BLADE STYLE - Opposing bevel with folding rescue hook
- + BLADE STEEL - N680 ultra stainless steel (57-59 HRC)
- + HANDLE - Textured Black G10 with stainless steel liners
- + BLADE LENGTH - 3.40" (8.64cm)
- + HOOK OPENING - 0.50" (12.70mm)
- + BLADE THICKNESS - 0.124" (3.15mm)
- + OPEN - 8.25" (20.96cm)
- + CLOSED - 4.85" (12.32cm)
- + WEIGHT - 5.24oz (148.55g)
- + HANDLE THICKNESS - 0.45" (11.43mm)



CONFIGURATIONS/MSRP  
917SBK | SERR | BLACK | \$300

### Tactical Triage® 917SBK

- + MECHANISM - AXIS® lock
- + BLADE STYLE - Drop-point with folding rescue hook
- + BLADE STEEL - CPM-S30V premium stainless steel (58-60HRC)
- + HANDLE - Black contoured G10 with stainless steel liners
- + BLADE LENGTH - 3.48" (8.84cm)
- + HOOK OPENING - 0.50" (12.70mm)
- + BLADE THICKNESS - 0.124" (3.15mm)
- + OPEN - 8.33" (21.16cm)
- + CLOSED - 4.85" (12.32cm)
- + WEIGHT - 5.28oz (149.69g)
- + HANDLE THICKNESS - 0.55" (13.97mm)





SCAN FOR MORE



TACTICAL



RESCUE



EDC



**CONFIGURATIONS/MSRP**

537GY-1		GRAY	\$300
537SGY-1	SERR	GRAY	\$300

### Bailout®

537GY-1

- + **MECHANISM** - AXIS® lock
- + **BLADE STYLE** - Tanto
- + **BLADE STEEL** - Tungsten Gray CPM-M4 super steel (62-64 HRC)
- + **HANDLE** - Woodland green anodized 6061-T6 aluminum
- + **BLADE LENGTH** - 3.38" (8.59cm)
- + **BLADE THICKNESS** - 0.090" (2.29mm)
- + **OPEN** - 8.09" (19.89cm)
- + **CLOSED** - 4.69" (20.55cm)
- + **WEIGHT** - 2.70oz (76.54g)
- + **HANDLE THICKNESS** - 0.41" (10.41mm)



TACTICAL



EDC



**CONFIGURATIONS/MSRP**

537GY		GRAY	\$200
-------	--	------	-------

### Bailout®

537GY

- + **MECHANISM** - AXIS® lock
- + **BLADE STYLE** - Tanto
- + **BLADE STEEL** - Tactical Gray CPM-3V super tough tool steel (60-62 HRC)
- + **HANDLE** - Black Grivory® with stainless steel liners
- + **BLADE LENGTH** - 3.38" (8.59cm)
- + **BLADE THICKNESS** - 0.090" (2.29mm)
- + **OPEN** - 8.12" (20.62cm)
- + **CLOSED** - 4.72" (11.99cm)
- + **WEIGHT** - 2.05oz (58.12g)
- + **HANDLE THICKNESS** - 0.41" (10.41mm)



SCAN FOR MORE



TACTICAL



EDC



**CONFIGURATIONS/MSRP**

5370FE		FLAT EARTH	\$325
--------	--	------------	-------

### Shootout®

5370FE

- + **MECHANISM** - Double-action out-the-front automatic. Spine fire release button
- + **BLADE STYLE** - Tanto
- + **BLADE STEEL** - Flat Earth PVD CPM-CruWear super strong tool steel (63-65HRC)
- + **HANDLE** - Graphite black CF-Elite® w/ Carbide glass breaker
- + **BLADE LENGTH** - 3.51" (8.92cm)
- + **BLADE THICKNESS** - 0.100" (2.54mm)
- + **OPEN** - 8.22" (20.88cm)
- + **CLOSED** - 4.71" (11.97cm)
- + **WEIGHT** - 2.80oz (79.38g)
- + **HANDLE THICKNESS** - 0.51" (12.95mm)



## 537SGY-1

TAKING LIGHTWEIGHT STRENGTH ONE STEP FURTHER, THE BAILOUT® CAN HANG WITH THE BEST OF THEM DESPITE ITS SLIM PROFILE.



TACTICAL



RESCUE



EDC





# PREPARED FOR THE UNKNOWN

Location - Third Edge Heli, Alaska

## 5370FE Shootout®

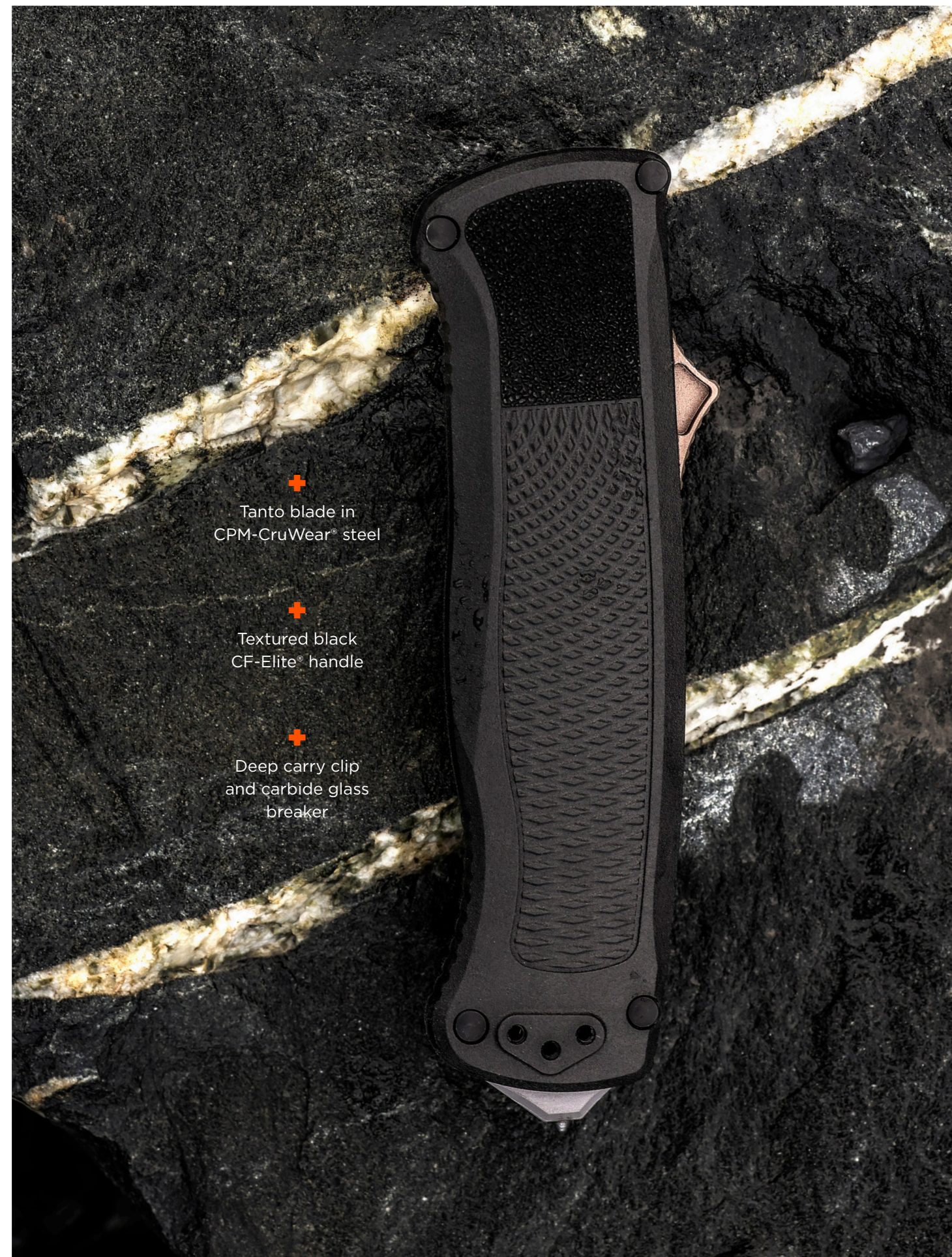
Tested In The Harshest Conditions



A no-nonsense out-the-front automatic, offering a lightning-fast, spine-fire release button and a sturdy CF-Elite® handle with detailed texture for a sure grip. It's easy to grab and use when you have other things on your mind, and that's playing it smart.



SCAN TO WATCH FILM



+  
Tanto blade in  
CPM-CruWear® steel

+  
Textured black  
CF-Elite® handle

+  
Deep carry clip  
and carbide glass  
breaker





**CONFIGURATIONS/MSRP**

391BK		BLACK		\$240		
391SBK		SERR		BLACK		\$240

## SOCP® Tactical Folder

391BK THOMPSON DESIGN

- + **MECHANISM** - AXIS® lock
- + **BLADE STYLE** - Spear-point
- + **BLADE STEEL** - Black D2 tool steel (60-62 HRC)
- + **HANDLE** - Black CF-Elite® with stainless steel liners
- + **BLADE LENGTH** - 4.47" (11.35cm)
- + **BLADE THICKNESS** - 0.121" (3.07mm)
- + **OPEN** - 10.13" (25.73cm)
- + **CLOSED** - 5.66" (14.38 cm)
- + **WEIGHT** - 4.10oz (116.23g)
- + **HANDLE THICKNESS** - 0.51" (25.40mm)



**CONFIGURATIONS/MSRP**

570-1		BLACK		\$190		
570SBK-1		SERR		BLACK		\$200

## Presidio® II

570-1

- + **MECHANISM** - AXIS® lock
- + **BLADE STYLE** - Drop-point
- + **BLADE STEEL** - CPM-S30V premium stainless steel (58-60 HRC)
- + **HANDLE** - Black textured CF-Elite®
- + **BLADE LENGTH** - 3.72" (9.45cm)
- + **BLADE THICKNESS** - 0.124" (3.15mm)
- + **OPEN** - 8.72" (22.15cm)
- + **CLOSED** - 5.00" (12.70cm)
- + **WEIGHT** - 4.97oz (140.90g)
- + **HANDLE THICKNESS** - 0.63" (16.00mm)



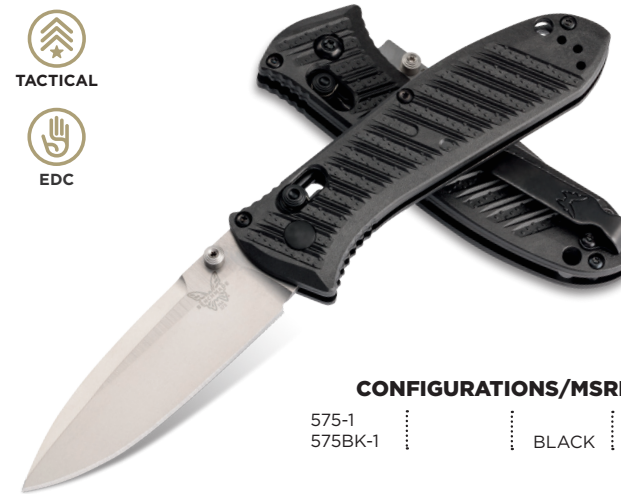
**CONFIGURATIONS/MSRP**

391T		RED		\$200
------	--	-----	--	-------

## SOCP® Tactical Folder

391T THOMPSON DESIGN

- + **MECHANISM** - AXIS® lock
- + **BLADE STYLE** - Trainer
- + **BLADE STEEL** - 440C stainless steel (58-60 HRC)
- + **HANDLE** - Black CF-Elite® with stainless steel liners
- + **BLADE LENGTH** - 4.04" (10.26cm)
- + **BLADE THICKNESS** - 0.121" (3.07mm)
- + **OPEN** - 9.70" (24.64cm)
- + **CLOSED** - 5.66" (14.38cm)
- + **WEIGHT** - 4.10oz (116.23g)
- + **HANDLE THICKNESS** - 0.51" (12.90mm)



**CONFIGURATIONS/MSRP**

575-1		BLACK		\$170		
575BK-1		SERR		BLACK		\$180

## Mini Presidio® II

575-1

- + **MECHANISM** - AXIS® lock
- + **BLADE STYLE** - Drop-point
- + **BLADE STEEL** - CPM-S30V premium stainless steel (58-60 HRC)
- + **HANDLE** - Black textured CF-Elite®
- + **BLADE LENGTH** - 3.20" (8.13cm)
- + **BLADE THICKNESS** - 0.114" (2.90mm)
- + **OPEN** - 7.48" (19.0cm)
- + **CLOSED** - 4.34" (11.02cm)
- + **WEIGHT** - 3.19oz (90.43g)
- + **HANDLE THICKNESS** - 0.56" (14.22mm)



**CONFIGURATIONS/MSRP**

417				\$250
-----	--	--	--	-------

## Fact®

417

- + **MECHANISM** - AXIS® lock
- + **BLADE STYLE** - Spear-point
- + **BLADE STEEL** - CPM-S30V premium stainless steel (58-60 HRC)
- + **HANDLE** - Skeletonized black anodized 6061-T6 billet aluminum
- + **BLADE LENGTH** - 3.95" (10.03cm)
- + **BLADE THICKNESS** - 0.110" (2.79mm)
- + **OPEN** - 8.72" (22.15cm)
- + **CLOSED** - 4.77" (12.12cm)
- + **WEIGHT** - 3.24oz (91.85g)
- + **HANDLE THICKNESS** - 0.48" (12.19mm)



**CONFIGURATIONS/MSRP**

430BK		BLACK		\$200		
430SBK		SERR		BLACK		\$200

## Redoubt®

430BK

- + **MECHANISM** - AXIS® lock
- + **BLADE STYLE** - Drop-point
- + **BLADE STEEL** - Cobalt Black CPM-D2 tool steel (60-62HRC)
- + **HANDLE** - Overlander Gray Grivory® w/ Forest Green Grip
- + **BLADE LENGTH** - 3.55" (9.02cm)
- + **BLADE THICKNESS** - 0.124" (3.15mm)
- + **OPEN** - 8.29" (21.06cm)
- + **CLOSED** - 4.75" (12.07cm)
- + **WEIGHT** - 3.70oz (104.89g)
- + **HANDLE THICKNESS** - 0.65" (16.51mm)





SCAN FOR MORE



TACTICAL



**CONFIGURATIONS/MSRP**

273FE-2	FLAT EARTH	\$290
273GY-1	GRAY	\$290

### Mini Adamas®

273 SIBERT DESIGN

- + **MECHANISM** - AXIS® lock
- + **BLADE STYLE** - Drop-point
- + **BLADE STEEL** - CPM-CruWear® super strong tool steel (63-65 HRC)
- + **HANDLE** - Contoured G10 with stainless steel liners. 273GY-1: Black, 273FE-2: OD
- + **BLADE LENGTH** - 3.25" (8.26cm)
- + **BLADE THICKNESS** - 0.140" (3.56mm)
- + **OPEN** - 7.62" (19.35cm)
- + **CLOSED** - 4.37" (11.10cm)
- + **WEIGHT** - 4.60oz (130.41g)
- + **HANDLE THICKNESS** - 0.63" (16.00mm)



TACTICAL



**CONFIGURATIONS/MSRP**

9070BK	BLACK	\$260
9070BK-1	BLACK	\$260

### Claymore

9070BK

- + **MECHANISM** - Push-button automatic with integrated safety
- + **BLADE STYLE** - Drop-point
- + **BLADE STEEL** - CPM-D2 tool steel (60-62 HRC)
- + **HANDLE** - Textured Grivory® with stainless steel liners. 9070BK: Black, 9070BK-1: Ranger Green
- + **BLADE LENGTH** - 3.60" (9.14cm)
- + **BLADE THICKNESS** - 0.114" (2.90mm)
- + **OPEN** - 8.60" (21.84cm)
- + **CLOSED** - 5.00" (12.70cm)
- + **WEIGHT** - 3.50oz (99.22g)
- + **HANDLE THICKNESS** - 0.60" (15.24mm)



TACTICAL



**CONFIGURATIONS/MSRP**

275GY-1		GRAY	\$325
275SGY-1	SERR	GRAY	\$325
275FE-2		FLAT EARTH	\$325
275SFE-2	SERR	FLAT EARTH	\$325

### Adamas®

275 SIBERT DESIGN

- + **MECHANISM** - AXIS® lock
- + **BLADE STYLE** - Drop-point
- + **BLADE STEEL** - CPM-CruWear® super strong tool steel (63-65 HRC)
- + **HANDLE** - Contoured G10 with stainless steel liners. 275GY-1/275SGY-1: Black, 275FE-2/275SFE-2: OD
- + **SHEATH** - 275GY-1/275SGY-1: Black ballistic nylon. 275FE-2/275SFE-2: Tan ballistic nylon
- + **BLADE LENGTH** - 3.82" (9.70cm)
- + **BLADE THICKNESS** - 0.140" (3.56mm)
- + **OPEN** - 8.93" (22.68cm)
- + **CLOSED** - 5.20" (13.21cm)
- + **WEIGHT** - 6.45oz (182.85g)
- + **HANDLE THICKNESS** - 0.63" (16.00mm)
- + **SHEATH WEIGHT** - 1.5oz (42.52g)



TACTICAL



**CONFIGURATIONS/MSRP**

9070SBK	SERR	BLACK	\$260
9070SBK-1	SERR	BLACK	\$260

### Claymore

9070SBK-1

- + **MECHANISM** - Push-button automatic with integrated safety
- + **BLADE STYLE** - Drop-point
- + **BLADE STEEL** - CPM-D2 tool steel (60-62 HRC)
- + **HANDLE** - Textured Grivory® with stainless steel liners. 9070SBK: Black, 9070SBK-1: Ranger Green
- + **BLADE LENGTH** - 3.60" (9.14cm)
- + **BLADE THICKNESS** - 0.114" (2.90mm)
- + **OPEN** - 8.60" (21.84cm)
- + **CLOSED** - 5.00" (12.70cm)
- + **WEIGHT** - 3.50oz (99.22g)
- + **HANDLE THICKNESS** - 0.60" (15.24mm)



TACTICAL



**CONFIGURATIONS/MSRP**

2750GY-3		GRAY	\$400
2750SGY-3	SERR	GRAY	\$400
2750FE-2		FLAT EARTH	\$400
2750SFE-2	SERR	FLAT EARTH	\$400

### Auto Adamas®

2750 SIBERT DESIGN

- + **MECHANISM** - Auto AXIS® lock with integrated safety
- + **BLADE STYLE** - Drop-point
- + **BLADE STEEL** - CPM-CruWear® super strong tool steel (63-65 HRC)
- + **HANDLE** - Contoured G10 with stainless steel liners. 2750GY-3/2750SGY-3: Black, 2750FE-2/2750SFE-2: OD
- + **SHEATH** - 2750GY-3/2750SGY-3: Black ballistic nylon. 2750FE-2/2750SFE-2: Tan ballistic nylon
- + **BLADE LENGTH** - 3.80" (9.65cm)
- + **BLADE THICKNESS** - 0.140" (3.56mm)
- + **OPEN** - 8.90" (22.61cm)
- + **CLOSED** - 5.11" (12.98cm)
- + **WEIGHT** - 6.17oz (174.92g)
- + **HANDLE THICKNESS** - 0.65" (16.51mm)
- + **SHEATH WEIGHT** - 1.5oz (42.52g)



EDC



TACTICAL



**CONFIGURATIONS/MSRP**

4170BK	BLACK	\$430
--------	-------	-------

### Auto Fact®

4170BK

- + **MECHANISM** - Auto AXIS® lock with integrated safety
- + **BLADE STYLE** - Spear-point
- + **BLADE STEEL** - CPM-S90V premium stainless steel (59-61 HRC)
- + **HANDLE** - Gray anodized 6061-T6 aluminum w/ carbon fiber inlay
- + **BLADE LENGTH** - 3.95" (10.03cm)
- + **BLADE THICKNESS** - 0.110" (2.79mm)
- + **OPEN** - 8.74" (22.20cm)
- + **CLOSED** - 4.80" (12.19cm)
- + **WEIGHT** - 3.11oz (88.17g)
- + **HANDLE THICKNESS** - 0.51" (12.95mm)





TACTICAL



**CONFIGURATIONS/MSRP**  
5700SGY-1 | SERR | GRAY | \$350

## Auto Presidio® II

5700SGY-1

- + **MECHANISM** - Auto AXIS® lock with integrated safety
- + **BLADE STYLE** - Drop-point
- + **BLADE STEEL** - CPM-M4 super steel (62-64 HRC)
- + **HANDLE** - Dark Earth anodized 6061-T6 aluminum
- + **BLADE LENGTH** - 3.72" (9.45cm)
- + **BLADE THICKNESS** - 0.14" (3.56mm)
- + **OPEN** - 8.72" (22.15cm)
- + **CLOSED** - 5.00" (12.70cm)
- + **WEIGHT** - 6.32oz (179.17g)
- + **HANDLE THICKNESS** - 0.63" (16.00mm)
- + **SHEATH WEIGHT** - 1.20oz (34.02g)



EDC



TACTICAL



**CONFIGURATIONS/MSRP**  
9400 | BLACK | \$300  
9400BK | BLACK | \$310

## Auto Osborne

9400 | OSBORNE DESIGN

- + **MECHANISM** - Push-button automatic with integrated safety
- + **BLADE STYLE** - Reverse tanto
- + **BLADE STEEL** - CPM-S30V premium stainless steel (58-60 HRC)
- + **HANDLE** - Osborne Green anodized 6061-T6 billet aluminum
- + **BLADE LENGTH** - 3.40" (8.64cm)
- + **BLADE THICKNESS** - 0.115" (2.92mm)
- + **OPEN** - 7.87" (19.99cm)
- + **CLOSED** - 4.47" (11.35cm)
- + **WEIGHT** - 2.65oz (75.13g)
- + **HANDLE THICKNESS** - 0.43" (10.92mm)



TACTICAL



**CONFIGURATIONS/MSRP**  
5700SBK | SERR | BLACK | \$330

## Auto Presidio® II

5700SBK

- + **MECHANISM** - Auto AXIS® lock with integrated safety
- + **BLADE STYLE** - Drop-point
- + **BLADE STEEL** - CPM-S30V premium stainless steel (58-60 HRC)
- + **HANDLE** - Black anodized 6061-T6 billet aluminum
- + **SHEATH** - Cordura® with snap retention and MALICE CLIP®
- + **BLADE LENGTH** - 3.72" (9.45cm)
- + **BLADE THICKNESS** - 0.124" (3.15mm)
- + **OPEN** - 8.72" (22.15cm)
- + **CLOSED** - 5.00" (12.70cm)
- + **WEIGHT** - 6.30oz (178.60g)
- + **HANDLE THICKNESS** - 0.63" (16.00mm)
- + **SHEATH WEIGHT** - 1.20oz (34.02g)



RESCUE



TACTICAL



**CONFIGURATIONS/MSRP**  
9170SBK | SERR | BLACK | \$350

## Auto Triage®

9170SBK

- + **MECHANISM** - Auto AXIS® lock with integrated safety
- + **BLADE STYLE** - Drop-point with automatic folding rescue hook
- + **BLADE STEEL** - N680 ultra stainless steel (57-59 HRC)
- + **HANDLE** - Black anodized 6061-T6 billet aluminum with textured G10 inlays
- + **BLADE LENGTH** - 3.58" (9.09cm)
- + **HOOK OPENING** - 0.50" (12.70mm)
- + **BLADE THICKNESS** - 0.124" (3.15mm)
- + **OPEN** - 8.31" (21.11cm)
- + **CLOSED** - 4.73" (12.01cm)
- + **WEIGHT** - 5.75oz (163.01g)
- + **HANDLE THICKNESS** - 0.58" (14.73mm)



TACTICAL



EDC



**CONFIGURATIONS/MSRP**  
8551BK | BLACK | \$320

## Mediator®

8551BK

- + **MECHANISM** - Push-button automatic with integrated safety
- + **BLADE STYLE** - Reverse tanto
- + **BLADE STEEL** - CPM-S90V premium stainless steel (59-61 HRC)
- + **HANDLE** - Black G10 with stainless steel liners
- + **BLADE LENGTH** - 3.30" (8.38cm)
- + **BLADE THICKNESS** - 0.115" (2.92mm)
- + **OPEN** - 7.75" (19.69cm)
- + **CLOSED** - 4.45" (11.30cm)
- + **WEIGHT** - 2.89oz (81.93g)
- + **HANDLE THICKNESS** - 0.52" (13.21mm)



TACTICAL



EDC



**CONFIGURATIONS/MSRP**  
4300 | BLACK | \$270  
4300BK | BLACK | \$280

## CLA

4300

- + **MECHANISM** - Push-button automatic with integrated safety
- + **BLADE STYLE** - Drop-point
- + **BLADE STEEL** - 154CM stainless steel (58-61 HRC)
- + **HANDLE** - Black contoured G10 with stainless steel liners
- + **BLADE LENGTH** - 3.40" (8.64cm)
- + **BLADE THICKNESS** - 0.114" (2.90mm)
- + **OPEN** - 7.85" (19.94cm)
- + **CLOSED** - 4.45" (11.30cm)
- + **WEIGHT** - 3.47oz (98.37g)
- + **HANDLE THICKNESS** - 0.49" (12.45mm)





**CONFIGURATIONS/MSRP**

4300-1 | | \$270

## CLA

4300-1

- + **MECHANISM** - Push-button automatic with integrated safety
- + **BLADE STYLE** - Drop-point
- + **BLADE STEEL** - 154CM stainless steel (58-61 HRC)
- + **HANDLE** - Green and Black contoured and textured G10 with stainless steel liners
- + **BLADE LENGTH** - 3.40" (8.64cm)
- + **BLADE THICKNESS** - 0.114" (2.90mm)
- + **OPEN** - 7.85" (19.94cm)
- + **CLOSED** - 4.45" (11.30cm)
- + **WEIGHT** - 3.60oz (102.06g)
- + **HANDLE THICKNESS** - 0.49" (12.45mm)



**CONFIGURATIONS/MSRP**

9051SBK | SERR | BLACK | \$280

## AFO II

9051SBK

- + **MECHANISM** - Push-button automatic with integrated safety
- + **BLADE STYLE** - Drop-point
- + **BLADE STEEL** - 154CM stainless steel (58-61 HRC)
- + **HANDLE** - Black anodized 6061-T6 billet aluminum
- + **SHEATH** - Cordura® with snap retention and MALICE CLIP®
- + **BLADE LENGTH** - 3.59" (9.12cm)
- + **BLADE THICKNESS** - 0.124" (3.15mm)
- + **OPEN** - 8.53" (21.67cm)
- + **CLOSED** - 4.95" (12.85cm)
- + **WEIGHT** - 5.80oz (164.43g)
- + **HANDLE THICKNESS** - 0.60" (15.24mm)



**CONFIGURATIONS/MSRP**

4400BK | | BLACK | \$230  
4400SBK | SERR | BLACK | \$230

## Casbah®

4400SBK

- + **MECHANISM** - Push-button automatic with integrated safety
- + **BLADE STYLE** - Drop-point
- + **BLADE STEEL** - CPM-S30V premium stainless steel (58-60 HRC)
- + **HANDLE** - Black textured Grivory® with stainless steel liners
- + **BLADE LENGTH** - 3.40" (8.64cm)
- + **BLADE THICKNESS** - 0.114" (2.90mm)
- + **OPEN** - 7.80" (19.81cm)
- + **CLOSED** - 4.40" (11.18cm)
- + **WEIGHT** - 3.43oz (97.24g)
- + **HANDLE THICKNESS** - 0.59" (14.99mm)



**CONFIGURATIONS/MSRP**

2551 | | | \$240

## Mini Reflex II

2551

- + **MECHANISM** - Push-button automatic with integrated safety
- + **BLADE STYLE** - Drop-point
- + **BLADE STEEL** - 154CM stainless steel (58-61 HRC)
- + **HANDLE** - Black anodized 6061-T6 billet aluminum
- + **BLADE LENGTH** - 3.17" (8.05cm)
- + **BLADE THICKNESS** - 0.097" (2.46mm)
- + **OPEN** - 7.35" (18.67cm)
- + **CLOSED** - 4.17" (10.59cm)
- + **WEIGHT** - 2.58oz (73.14g)
- + **HANDLE THICKNESS** - 0.48" (12.19mm)



**CONFIGURATIONS/MSRP**

9101SBK | SERR | BLACK | \$280

## Auto Stryker®

9101SBK

- + **MECHANISM** - Push-button automatic with integrated safety
- + **BLADE STYLE** - Tanto
- + **BLADE STEEL** - 154CM stainless steel (58-61 HRC)
- + **HANDLE** - Black anodized 6061-T6 billet aluminum
- + **BLADE LENGTH** - 3.60" (9.14cm)
- + **BLADE THICKNESS** - 0.124" (3.15mm)
- + **OPEN** - 8.30" (21.08cm)
- + **CLOSED** - 4.70" (11.94cm)
- + **WEIGHT** - 4.20oz (119.07g)
- + **HANDLE THICKNESS** - 0.50" (12.70mm)



**CONFIGURATIONS/MSRP**

3551 | | | \$240

## Stimulus

3551 PARDUE DESIGN

- + **MECHANISM** - Push-button automatic with integrated safety
- + **BLADE STYLE** - Drop-point
- + **BLADE STEEL** - 154CM stainless steel (58-61 HRC)
- + **HANDLE** - Black anodized 6061-T6 billet aluminum
- + **BLADE LENGTH** - 2.99" (7.59cm)
- + **BLADE THICKNESS** - 0.088" (2.24mm)
- + **OPEN** - 7.09" (18.00cm)
- + **CLOSED** - 4.10" (10.41cm)
- + **WEIGHT** - 2.71oz (76.83g)
- + **HANDLE THICKNESS** - 0.46" (11.68mm)





**CONFIGURATIONS/MSRP**

3300BK | BLACK | \$550

### Infidel®

3300BK McHENRY DESIGN

- + **MECHANISM** - Double-action out-the-front automatic
- + **BLADE STYLE** - Double-edge dagger with fuller
- + **BLADE STEEL** - D2 tool steel (60-62 HRC)
- + **HANDLE** - Black anodized 6061-T6 billet aluminum
- + **SHEATH** - Cordura® with snap retention and MALICE CLIP®
- + **BLADE LENGTH** - 3.91" (9.93cm)
- + **BLADE THICKNESS** - 0.118" (3.00mm)
- + **OPEN** - 8.91" (22.63cm)
- + **CLOSED** - 5.00" (12.70cm)
- + **WEIGHT** - 4.90oz (138.91g)
- + **HANDLE THICKNESS** - 0.59" (14.99mm)



**CONFIGURATIONS/MSRP**

3350BK | BLACK | \$500

### Mini Infidel®

3350BK McHENRY DESIGN

- + **MECHANISM** - Double-action out-the-front automatic
- + **BLADE STYLE** - Double-edge dagger with fuller
- + **BLADE STEEL** - D2 tool steel (60-62 HRC)
- + **HANDLE** - Black anodized 6061-T6 billet aluminum
- + **SHEATH** - Cordura® with snap retention and MALICE CLIP®
- + **BLADE LENGTH** - 3.10" (7.87cm)
- + **BLADE THICKNESS** - 0.104" (2.64mm)
- + **OPEN** - 7.10" (18.03cm)
- + **CLOSED** - 4.00" (10.16cm)
- + **WEIGHT** - 3.40oz (96.39g)
- + **HANDLE THICKNESS** - 0.54" (13.72mm)



**CONFIGURATIONS/MSRP**

4600DLC | BLACK | \$425

### Phaeton®

4600DLC

- + **MECHANISM** - Double-action out-the-front automatic
- + **BLADE STYLE** - Clip-point
- + **BLADE STEEL** - CPM-S30V premium stainless steel (58-60 HRC)
- + **HANDLE** - Black anodized 6061-T6 billet aluminum
- + **BLADE LENGTH** - 3.45" (8.76cm)
- + **BLADE THICKNESS** - 0.125" (3.18mm)
- + **OPEN** - 8.08" (20.52cm)
- + **CLOSED** - 4.63" (11.76cm)
- + **WEIGHT** - 3.01oz (85.33g)
- + **HANDLE THICKNESS** - 0.47" (11.94mm)

### Phaeton®

4600DLC-1



**CONFIGURATIONS/MSRP**

4600DLC-1 | BLACK | \$425

- + **MECHANISM** - Double-action out-the-front automatic
- + **BLADE STYLE** - Clip-point
- + **BLADE STEEL** - CPM-S30V premium stainless steel (58-60 HRC)
- + **HANDLE** - Dark Earth anodized 6061-T6 billet aluminum
- + **BLADE LENGTH** - 3.45" (8.76cm)

- + **BLADE THICKNESS** - 0.125" (3.18mm)
- + **OPEN** - 8.08" (20.52cm)
- + **CLOSED** - 4.63" (11.76cm)
- + **WEIGHT** - 3.01oz (85.33g)
- + **HANDLE THICKNESS** - 0.47" (11.94mm)



MINI INFIDEL 3350BK





CONFIGURATIONS/MSRP  
3400BK | BLACK | \$525

### Autocrat® 3400BK

- + **MECHANISM** - Double-action out-the-front automatic. Spine fire release button
- + **BLADE STYLE** - Double-edge dagger with fuller
- + **BLADE STEEL** - CPM-S30V premium stainless steel (58-60 HRC)
- + **HANDLE** - Black G10 scales with Black anodized 6061-T6 aluminum frame
- + **BLADE LENGTH** - 3.71" (9.42cm)
- + **BLADE THICKNESS** - 0.105" (2.67mm)
- + **OPEN** - 8.75" (22.23cm)
- + **CLOSED** - 5.04" (12.80cm)
- + **WEIGHT** - 3.93oz (111.41g)
- + **HANDLE THICKNESS** - 0.60" (15.24mm)



CONFIGURATIONS/MSRP  
375FE-1 | FLAT EARTH | \$275

### Fixed Adamas® 375FE-1 SIBERT DESIGN

- + **MECHANISM** - Fixed Blade
- + **BLADE STYLE** - Drop-point
- + **BLADE STEEL** - CPM-CruWear® super strong tool steel (63-65 HRC)
- + **SHEATH** - Ranger Green PIM
- + **BLADE LENGTH** - 4.20" (10.67cm)
- + **BLADE THICKNESS** - 0.17" (4.32mm)
- + **OPEN** - 9.17" (23.29cm)
- + **WEIGHT** - 5.66oz (160.46g)
- + **SHEATH WEIGHT** - 1.11oz (31.47g)



CONFIGURATIONS/MSRP  
3400BK-1 | BLACK | \$500

### Autocrat® 3400BK-1

- + **MECHANISM** - Double-action out-the-front automatic. Spine fire release button.
- + **BLADE STYLE** - Double-edge dagger with fuller
- + **BLADE STEEL** - CPM-S30V premium stainless steel (58-60 HRC)
- + **HANDLE** - OD textured G10 scales with Black anodized 6061-T6 aluminum frame
- + **BLADE LENGTH** - 3.71" (9.42cm)
- + **BLADE THICKNESS** - 0.105" (2.67mm)
- + **OPEN** - 8.75" (22.23cm)
- + **CLOSED** - 5.04" (12.80cm)
- + **WEIGHT** - 3.93oz (111.41g)
- + **HANDLE THICKNESS** - 0.60" (15.24mm)



CONFIGURATIONS/MSRP  
375BK-1 | BLACK | \$275

### Fixed Adamas® 375BK-1 SIBERT DESIGN

- + **MECHANISM** - Fixed Blade
- + **BLADE STYLE** - Drop-point
- + **BLADE STEEL** - CPM-CruWear® super strong tool steel (63-65 HRC)
- + **SHEATH** - Black PIM
- + **BLADE LENGTH** - 4.20" (10.67cm)
- + **BLADE THICKNESS** - 0.17" (4.32mm)
- + **OPEN** - 9.17" (23.29cm)
- + **WEIGHT** - 5.66oz (160.46g)
- + **SHEATH WEIGHT** - 1.11oz (31.47g)



CONFIGURATIONS/MSRP  
3400BK-2 | BLACK | \$500

### Autocrat® 3400BK-2

- + **MECHANISM** - Double-action out-the-front automatic. Spine fire release button.
- + **BLADE STYLE** - Double-edge dagger with fuller
- + **BLADE STEEL** - CPM-S30V premium stainless steel (58-60 HRC)
- + **HANDLE** - Coyote Brown textured G10 scales with black anodized 6061-T6 aluminum frame
- + **BLADE LENGTH** - 3.71" (9.42cm)
- + **BLADE THICKNESS** - 0.105" (2.67mm)
- + **OPEN** - 8.75" (22.23cm)
- + **CLOSED** - 5.04" (12.80cm)
- + **WEIGHT** - 3.93oz (111.41g)
- + **HANDLE THICKNESS** - 0.60" (15.24mm)



CONFIGURATIONS/MSRP  
112SBK-BLK | SERR | BLACK | \$170

### H20 Fixed 112SBK-BLK

- + **MECHANISM** - Fixed Blade
- + **BLADE STYLE** - Opposing bevel with blunt tip and integrated rescue hook
- + **BLADE STEEL** - N680 ultra stainless steel (57-59 HRC)
- + **HANDLE** - Black textured Santoprene®
- + **SHEATH** - Injection molded with thumb release
- + **BLADE LENGTH** - 3.50" (8.89cm)
- + **BLADE THICKNESS** - 0.12" (3.15mm)
- + **OPEN** - 8.07" (20.50cm)
- + **WEIGHT** - 3.20oz (90.72g)
- + **HANDLE THICKNESS** - 0.54" (13.72mm)
- + **SHEATH WEIGHT** - 1.04oz (29.48g)





**CONFIGURATIONS/MSRP**  
177BK | BLACK | \$120

### Mini SOCP®

177BK THOMPSON DESIGN

- + **MECHANISM** - Fixed Blade
- + **BLADE STYLE** - Spear-point
- + **BLADE STEEL** - 440C stainless steel (58-60 HRC)
- + **HANDLE** - Black coated single-piece with finger ring
- + **SHEATH** - MOLLE® compatible with MALICE CLIP®, injection molded in black with lanyard hole and clip
- + **BLADE LENGTH** - 2.22" (5.64cm)
- + **BLADE THICKNESS** - 0.175" (4.45mm)
- + **OPEN** - 6.25" (15.88cm)
- + **WEIGHT** - 3.00oz (85.05g)
- + **HANDLE THICKNESS** - 0.18" (4.57mm)
- + **SHEATH WEIGHT** - 0.92oz (26.08g)



**CONFIGURATIONS/MSRP**  
176BK-COMBO | BLACK | \$180  
176BKSN-COMBO | BLACK | \$180

### SOCP® Dagger

176BK-COMBO THOMPSON DESIGN

- + **MECHANISM** - Fixed blade
- + **BLADE STYLE** - Double-edge dagger
- + **BLADE STEEL** - 440C stainless steel (58-60 HRC)
- + **HANDLE** - Black coated single-piece with finger ring
- + **SHEATH** - MOLLE® compatible, MALICE CLIP® free, injection molded in black or sand with lanyard hole and clip
- + **BLADE LENGTH** - 3.22" (8.18cm)
- + **BLADE THICKNESS** - 0.175" (4.45mm)
- + **OPEN** - 7.25" (18.42cm)
- + **WEIGHT** - 2.12oz (60.10g)
- + **SHEATH WEIGHT** - 1.04oz (29.48g)



**CONFIGURATIONS/MSRP**  
173BK | BLACK | \$120

### Mini SOCP®

173BK THOMPSON DESIGN

- + **MECHANISM** - Fixed Blade
- + **BLADE STYLE** - Double-edge dagger
- + **BLADE STEEL** - 440C stainless steel (58-60 HRC)
- + **HANDLE** - Black coated single-piece with finger ring
- + **SHEATH** - MOLLE® compatible, MALICE CLIP® free, injection molded in black with lanyard hole and clip
- + **BLADE LENGTH** - 2.22" (5.64cm)
- + **BLADE THICKNESS** - 0.175" (4.45mm)
- + **OPEN** - 6.25" (15.88cm)
- + **WEIGHT** - 3.00oz (85.05g)
- + **HANDLE THICKNESS** - 0.18" (4.57mm)
- + **SHEATH WEIGHT** - 0.92oz (26.08g)



**CONFIGURATIONS/MSRP**  
179GRY | GRAY | \$110

### SOCP® Rescue Tool

179GRY THOMPSON DESIGN

- + **MECHANISM** - Fixed blade
- + **BLADE STYLE** - Rescue hook with carbide glass breaker and oxygen wrench
- + **BLADE STEEL** - 440C stainless steel (58-60 HRC)
- + **HANDLE** - Gray coated single-piece tool with finger ring
- + **SHEATH** - MOLLE® compatible, MALICE CLIP® free, injection molded in black with lanyard hole and clip
- + **BLADE LENGTH** - 2.50" (6.35cm)
- + **BLADE THICKNESS** - 0.120" (3.05mm)
- + **HOOK OPENING** - 0.38" (9.53mm)
- + **OPEN** - 6.75" (17.15cm)
- + **WEIGHT** - 1.88oz (53.30g)
- + **SHEATH WEIGHT** - 1.04oz (29.48g)



**CONFIGURATIONS/MSRP**  
176BK | BLACK | \$130  
176BKSN | BLACK | \$130

### SOCP® Dagger

176BK THOMPSON DESIGN

- + **MECHANISM** - Fixed Blade
- + **BLADE STYLE** - Double-edge dagger
- + **BLADE STEEL** - 440C stainless steel (58-60 HRC)
- + **HANDLE** - Black coated single-piece with finger ring
- + **SHEATH** - MOLLE® compatible, MALICE CLIP® free, injection molded in black or sand with lanyard hole and clip
- + **BLADE LENGTH** - 3.22" (8.18cm)
- + **BLADE THICKNESS** - 0.175" (4.45mm)
- + **OPEN** - 7.25" (18.42cm)
- + **WEIGHT** - 2.12oz (60.10g)
- + **HANDLE THICKNESS** - 0.18" (4.45mm)
- + **SHEATH WEIGHT** - 1.04oz (29.48g)



**CONFIGURATIONS/MSRP**  
176T | RED | \$80

### SOCP® Trainer

176T THOMPSON DESIGN

- + **MECHANISM** - Fixed Blade
- + **BLADE STYLE** - Trainer
- + **BLADE STEEL** - 440C stainless steel (58-60 HRC)
- + **HANDLE** - Red coated single-piece with finger ring
- + **SHEATH** - MOLLE® compatible, MALICE CLIP® free, injection molded in black with lanyard hole and clip
- + **BLADE LENGTH** - 2.78" (7.06cm)
- + **BLADE THICKNESS** - 0.175" (4.45mm)
- + **OPEN** - 6.81" (17.30cm)
- + **WEIGHT** - 2.58oz (73.14g)
- + **SHEATH WEIGHT** - 1.04oz (29.48g)





**CONFIGURATIONS/MSRP**

141SBKSN | SERR | BLACK | \$250

### Nimravus®

141SBKSN

- + **MECHANISM** - Fixed blade
- + **BLADE STYLE** - Tanto
- + **BLADE STEEL** - 154CM stainless steel (58-61 HRC)
- + **HANDLE** - Sand anodized 6061-T6 billet aluminum
- + **SHEATH** - Multifunctional, nylon, and MOLLE® compatible with MALICE CLIP®
- + **BLADE LENGTH** - 4.50" (11.43cm)
- + **BLADE THICKNESS** - 0.115" (2.92mm)
- + **OPEN** - 9.45" (24.00cm)
- + **WEIGHT** - 5.86oz (166.13g)
- + **HANDLE THICKNESS** - 0.58" (14.73mm)
- + **SHEATH WEIGHT** - 5.00oz (141.75g)



RESCUE



TACTICAL



**CONFIGURATIONS/MSRP**

8BLKW MED | BLACK | \$70

### 8 Med Hook

8BLKW MED

- + **MECHANISM** - Rescue hook
- + **BLADE STYLE** - Hook
- + **BLADE STEEL** - 440C stainless steel (58-60 HRC)
- + **HANDLE** - Coated skeletonized
- + **SHEATH** - Black nylon with MALICE CLIP®
- + **HOOK OPENING** - 0.50" (12.70mm)
- + **OPEN** - 6.50" (16.51cm)
- + **WEIGHT** - 1.86oz (52.73g)
- + **SHEATH WEIGHT** - 0.88oz (24.95g)



RESCUE



TACTICAL



**CONFIGURATIONS/MSRP**

7 BLKW | BLACK | \$60

### 7 Hook

7 BLKW

- + **MECHANISM** - Rescue hook
- + **BLADE STYLE** - Hook
- + **BLADE STEEL** - High carbon stainless steel (58-60 HRC)
- + **HANDLE** - Single piece dip coated handle
- + **SHEATH** - Nylon MOLLE® compatible with included MALICE CLIP®
- + **HOOK OPENING** - 0.50" (12.70mm)
- + **OPEN** - 4.30" (10.92cm)
- + **WEIGHT** - 1.50oz (42.52g)
- + **SHEATH WEIGHT** - 0.95oz (26.93g)



EDC



**CONFIGURATIONS/MSRP**

1120 | \$190  
1120-1 | \$170

### 1120 Longhand

1120-1

- + **MECHANISM:** AXIS® Styled Bolt Action
- + **INK CARTRIDGE:** Fisher Space Pen
- + **MATERIAL:** 1120 Brushed 303 Stainless Steel, 1120-1: Black 6061-T6 Aircraft Aluminum
- + **OPEN LENGTH:** 4.62" (11.73cm)
- + **HANDLE DIAMETER:** 0.45" (11.53mm)
- + **WEIGHT:** 1120: 1.90oz (53.86g), 1120-1: 0.90oz (25.51g)
- + **PEN REFILL:** Fisher Space Pen, Ballpoint Refill, Black
- + SKU: 98486F



RESCUE



TACTICAL



**CONFIGURATIONS/MSRP**

8 BLKW | BLACK | \$70

### 8 Hook

8 BLKW

- + **MECHANISM** - Rescue hook
- + **BLADE STYLE** - Hook
- + **BLADE STEEL** - 440C stainless steel (58-60 HRC)
- + **HANDLE** - Coated skeletonized
- + **SHEATH** - Black nylon with MALICE CLIP®
- + **HOOK OPENING** - 0.50" (12.70mm)
- + **OPEN** - 6.50" (16.51cm)
- + **WEIGHT** - 1.43oz (40.54g)
- + **SHEATH WEIGHT** - 0.88oz (24.95g)



EDC



**CONFIGURATIONS/MSRP**

1121 | \$180  
1121-1 | \$160

### 1121 Shorthand

1121

- + **MECHANISM:** AXIS® Styled Bolt Action
- + **INK CARTRIDGE:** Fisher Space Pen
- + **MATERIAL:** 1121: Brushed 303 Stainless Steel, 1121-1: Black 6061-T6 Aircraft Aluminum
- + **OPEN LENGTH:** 3.49" (8.86cm)
- + **HANDLE DIAMETER:** 0.45" (11.53mm)
- + **WEIGHT:** 1121: 1.60oz (45.36g), 1121-1: 0.71oz (20.13g)
- + **PEN REFILL:** Fisher Space Pen, Ballpoint Refill, Black
- + SKU: 10251F





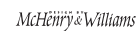
# DESIGNER COLLABORATIONS

Benchmade believes working with custom designers creates the most innovative and functional designs in the industry. These skilled artisans and craftsmen pour their passion into their work and agonize over every detail. By collaborating with a selection of world-class custom designers, we're able to tap into the newest locking mechanisms, modern materials, and custom blending and finishing techniques.



## MEL PARDUE

Mel Pardue set industry standards and built a dedicated following grinding sparks over his 60-plus years as a custom knife maker. As one of our first outside design partners, his style had a class and simplicity all its own. For 25 years, his collaborations with Benchmade have offered great utility, presented with upscale distinction, to the everyday knife user. With Mel's designs, less is definitely more.



## BILL MCHENRY & JASON WILLIAMS

Talented designers and developers of several innovations in the knife-making world including the Benchmade AXIS® mechanism.



## WARREN OSBORNE

Bridging the gap between custom and production knives, Warren created some of Benchmade's most iconic and loved models like the 940 series, Barrage, Rift and Contego. Warren set very high standards for himself and we are proud that his work has become ingrained in Benchmade's DNA.



## SHANE SIBERT

Since 1994, Shane Sibert's goal has been to design and create unique knives that evoke pride of ownership while at the same time perform tasks and challenges with exceptional ease. A lifelong avid backpacker, Shane draws inspiration from hiking throughout the Pacific Northwest's vast wilderness. He's an occasional practitioner of martial arts and enjoys scuba diving in Oregon's chilly waters.



## GREG THOMPSON

Greg used an extensive background in mixed martial arts to create the Special Operations Combatives Program (SOCP), a designated program for U.S. Army Special Operations Forces. With over 15 years of experience training Special Operations soldiers, Greg currently works as the Director of Training for the XVIII Airborne Corps at Fort Bragg, NC



# SHARPENERS



## 20° Guided Hone Tool

20° Guided Hone Tool with a controlled 20° angle featuring a ceramic rod and leather strop to keep your edge sharp.

### 50080 (Single)

+ PRICE - \$30.00

### 50081 (12 Pack)

+ PRICE - \$360.00



## 14° Guided Hone Tool

14° Guided Hone Tool designed specifically for SelectEdge® with a controlled 14° angle featuring a ceramic rod and leather strop to keep your edge sharp.

### 50082 (Single)

+ PRICE - \$30.00

### 50083 (12 Pack)

+ PRICE - \$360.00



## Guided Field Sharpener

20° controlled-angle sharpener, perfect for knives, fish hooks, broadheads, and more.

### 100604F

+ PRICE - \$50.00



## Edge Maintenance Tool

In collaboration with Work Sharp, the Edge Maintenance Tool features a ceramic rod and leather strop to keep your edge sharp anywhere you have your knife.

### 50030

+ PRICE - \$60.00



# SHEATHS

## Blue Class Model Specific

- 988271F** - 162 Bushcrafter  
+ **PRICE** - \$30.00
- 101203F** - 200 Puukko
- 101223F** - 202 Leuku  
+ **PRICE** - \$35.00



## Hunt Model Specific

- 102637F** - 15017-1 Hidden Canyon  
+ **PRICE** - \$40.00
- 103195F** - 15017 Hidden Canyon  
+ **PRICE** - \$35.00
- 102638F** - 15002 Saddle Mt. (Black Boltaron®)  
+ **PRICE** - \$40.00
- 103193F** - 15002 Saddle Mt. (Brown leather)
- 103194F** - 15004 Saddle Mt. (Brown leather)  
+ **PRICE** - \$35.00
- 102154F** - 15006 Steep Country  
+ **PRICE** - \$40.00



## Black Class Model Specific

- 987592F** - 375BK-1 Fixed Adamas® (Black)
- 102803F** - 375FE-1 Fixed Adamas® (Ranger green)  
+ **PRICE** - \$50.00
- 983469F** - 141SBKSN Nimravus® (Coyote)  
+ **PRICE** - \$60.00
- 101622F** - 173BK Mini SOCP®  
+ **PRICE** - \$25.00
- 987495F** - 176BK SOCP® (Black)
- 987496F** - 176BK SOCP® (Sand)  
+ **PRICE** - \$25.00



## Cordura® Folder Pouch Snap Retention (MOLLE® Compatible)

Sheaths come standard with MALICE CLIP® and Velcro® adjustable belt hanger for belt carry. Heavy stitch and hard liners stow the knife securely and a snap-around closure secures the handle. Made in USA.

- 100778F** - Black  
+ **PRICE** - \$35.00



## Soft Sheaths

All soft sheaths are 1680-denier poly-ballistic nylon with liners and Velcro® closures. Made in USA.

- 981086F** - Soft Sheath, small (1.625" W x 5" D), black
- 981087F** - Soft Sheath, large (2" W x 5.25" D), black
- 981717F** - Soft Sheath, 4" Bali-Song® Series, black  
+ **PRICE** - \$15.00



## 7-Hook (MOLLE® Compatible)

These Velcro® hood closure pouches secure the Rescue Hook for belt carry, and are MOLLE® system enabled with the MALICE CLIP® (sold separately). Made in USA.

- + **984166F** - Black
- + **984205F** - Foliage Green
- + **984204F** - Coyote
- + **PRICE** - \$15.00



## 8-Hook Pouch (MOLLE® Compatible)

These Velcro® hood closure pouches secure the Rescue Hook for belt carry, and are MOLLE® system enabled with the MALICE CLIP® (sold separately). Made in USA.

- 985398F** - Black
- 985570F** - Foliage Green
- 985569F** - Coyote  
+ **PRICE** - \$18.00

## Tek-Lok™

Multiple position options with compatible sheath.

- 981609F** - Tek-Lok™, large size  
+ **PRICE** - \$20.00

## Folder Pouch (MOLLE® Compatible)

These snap-over hood closure pouches secure the knife well and can be used for belt carry with the MALICE CLIP® (included), and are MOLLE® system enabled too. Heavy stitch and elasticized true fit. Made in USA.

- 984818F** - Black  
+ **PRICE** - \$30.00

# ACCESSORIES



## Fight Light MALICE® Clips

- 102789F** - Short Blk (3" size)
- 102790F** - Short Snd (3" size)
- 103226F** - Long Blk (5" size)  
+ **PRICE** - \$4.00



## BlueLube® Lubricant 983900F

- + **PRICE** - \$15.00

## BlueLube® Cleanser 983901F

- + **PRICE** - \$20.00

Clean, lubricate, and protect your Benchmade.



## Bottle Opener 1000000

- + **STYLE** - Bottle opener
- + **COLOR** - Gray Steel
- + **MATERIAL** - Stainless steel with wordmark cutout
- + **PRICE** - \$20.00



## Knifsmith Multi-Bit Driver

- 50141** - Hanging  
+ **PRICE** - \$75.00
- 104688F** - Replacement bit  
+ **PRICE** - \$30.00



## Benchmade Ferro Rod 50023

- + **STYLE** - Ferro Rod
- + **MATERIAL** - Blue anodized 6061-T6 aluminum tinder capsule
- + **STRIKER** - 5/16" by 3.10" ferrocium rod
- + **EXTRA** - QuickLIGHT™ waterproof tinder
- + **ORIGIN** - Made in the USA by Exotac
- + **PRICE** - \$50.00



## Pint Glass 988053F

- + **STYLE** - Pint glass
- + **COLOR** - Clear with blue Benchmade butterfly logo
- + **MATERIAL** - Glass
- + **PRICE** - \$15.00



## Blue Box Tool Kit

T6, T8, and T10 Torx bits with a bit holder/extension, all in a molded plastic case that doubles as the handle.

- 981084F**  
+ **PRICE** - \$25.00



## Knife Roll 50019

- + **STYLE** - Knife Roll
- + **COLOR** - Gray with black accents
- + **MATERIAL** - 1680 nylon and urethane coating construction
- + **CAPACITY** - Holds up to eleven knives and two pens
- + **EXTRA** - Two integrated loop panels for morale patches
- + **PRICE** - \$75.00



## Coffee Mug 989133F

- + **STYLE** - Coffee mug
- + **COLOR** - Matte Black with Gloss Black logo, handle, rim
- + **MATERIAL** - Ceramic
- + **PRICE** - \$15.00





7 BLKW PG72

8 BLKW PG72

8BLKW MED PG72

85 PG34

112SBK-BLK PG69

940-2 PG20

945 PG22

945BK-1 PG22

945-221 PG17

980SBK PG52

141SBKSN PG72

162 PG35

173BK PG70

176BK PG70

176T PG71

1120 PG73

1121 PG73

2551 PG65

2750GY-3 PG60

3300BK PG66

176BK-COMBO PG71

177BK PG70

179GRY PG71

200 PG35

202 PG35

3350BK PG66

3400BK PG68

3400BK-1 PG68

3400BK-2 PG68

3551 PG65

273GY-1 PG60

275GY-1 PG60

317 PG32

317-1 PG32

375FE-1 PG69

4170BK PG61

4300 PG63

4300-1 PG64

4400BK PG64

4600DLC PG66

375BK-1 PG69

391BK PG58

391T PG58

417 PG58

430BK PG59

4600DLC-1 PG67

5370FE PG54

5700SBK PG62

5700SGY-1 PG62

8551BK PG60

490 PG33

495 PG33

533 PG28

533BK-1 PG28

533BK-2 PG29

9051SBK PG65

9070BK PG61

9070SBK-1 PG61

9101SBK PG64

9170SBK PG63

533-3 PG29

535 PG22

535GRY-1 PG23

535BK-2 PG23

535-3 PG23

9400 PG63

15002 PG47

15002-1 PG47

15004 PG47

15006 PG46

535BK-4 PG28

537GY PG54

537GY-1 PG54

539GY PG34

550-S30V PG29

15017 PG46

15017-1 PG46

15031-2 PG48

15060-2 PG48

15080-2 PG48

551-S30V PG30

555-S30V PG30

556-S30V PG30

560BK-1 PG30

565-1 PG33

15085-2 PG49

15500 PG40

15500OR-2 PG40

15500-3 PG40

15535 PG41

570-1 PG59

575-1 PG59

580 PG31

583BK PG32

585 PG31

15600OR PG41

15700 PG41

916SBK PG52

916SBK-ORG PG53

917SBK PG52

940 PG20

940-1 PG20



## USA

CUSTOMER  
SERVICE/SALES

TELEPHONE:  
833.557.2526

CUSTOMER  
SERVICE FAX:  
503.496.1896

EMAIL:  
info@benchmade.com

WEB:  
dealer.benchmade.com

## LAW ENFORCEMENT

CUSTOMER  
SERVICE/SALES

TELEPHONE:  
833.557.2526  
(ASK FOR LE SALES)

EMAIL:  
lesales@benchmade.com

WEB:  
benchmade.com

## FEDERAL GOVERNMENT

CUSTOMER  
SERVICE/SALES

TELEPHONE:  
833.557.2526  
(ASK FOR FED/GOV SALES)

FED/GOV FAX:  
503.496.1896

EMAIL:  
military@benchmade.com

WEB:  
benchmade.com

## INTERNATIONAL

CUSTOMER  
SERVICE/SALES

TELEPHONE:  
1.833.557.2526  
(ASK FOR INTERNATIONAL SALES)

EMAIL:  
international@benchmade.com

WEB:  
benchmade.com

CAGE CODE:  
041N2



**2023 BENCHMADE KNIFE CO, INC**

300 BEAVERCREEK ROAD  
OREGON CITY, OR 97045