



BENCHMADE®

2007 PROFESSIONAL CATALOG

FAILURE IS NOT AN OPTION.

“THE LIFE OF A SOLDIER IS NOT FOR EVERYONE. YOUR COMPASS ONLY POINTS FORWARD, GUIDED BY A SPIRITED WILL TO SERVE, AND DRIVEN BY AN UNDAUNTED DEDICATION TO PROTECT AT ALL COSTS. IT TAKES A UNIQUE INDIVIDUAL TO PUT IT ALL ON THE LINE SO THAT ANOTHER MAY HAVE THE FREEDOM TO CHOOSE. FOR YOU, IT IS NOT ABOUT THE GLORY, IT GOES MUCH DEEPER THAN THAT. ONLY YOU CAN UNDERSTAND THE TRUE MEANING OF FAILURE IS NOT AN OPTION. ANYTHING LESS, JUST WON'T CUT IT.”

Benchmade recognizes the fact that we get to go home at night thanks to you, and those that have served before you. Most of us will never have walked in your shoes. That is why we dedicate our every effort to make the best tools we possibly can for you. Know that each is built with you in mind. We will never forget.

NOTICE: PROCUREMENT OF AUTOMATIC KNIVES IS REGULATED BY LAW. NO EXCEPTIONS WILL BE MADE. IT IS THE PURCHASERS RESPONSIBILITY TO CHECK THE CURRENT LEGAL PERMISSIBILITY WITHIN YOUR STATE AND/OR LOCALITY.

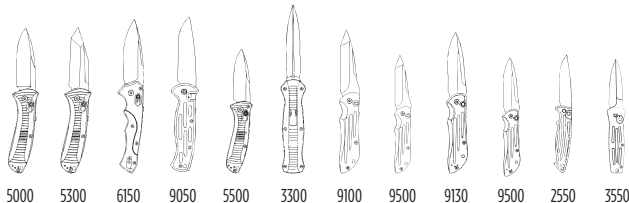
Although automatic opening knives are not subject to prohibitive legislation in Oregon*, many states are not so fortunate. Federal law prohibits shipment of automatic knives across state lines, with the following exceptions: (1) to civilian or Armed Forces supply or procurement officers and employees of the Federal Government ordering, procuring, or purchasing such knives in connection with the activities of the Federal Government; (2) to supply or procurement officers of the National Guard, the Air National Guard, or militia of the State, Territory or the District of Columbia ordering, procuring, or purchasing such knives in connection with the activities of such organization; (3) to supply or procurement officers or employees of the municipal government of the District of Columbia or of the government of any State or Territory; (4) to manufacturers of such knives or bona fide dealers therein in connection with any shipment made pursuant of an order from any person designated in paragraphs (1), (2), and (3).

*Not to be carried concealed.

BENCHMADE[®]

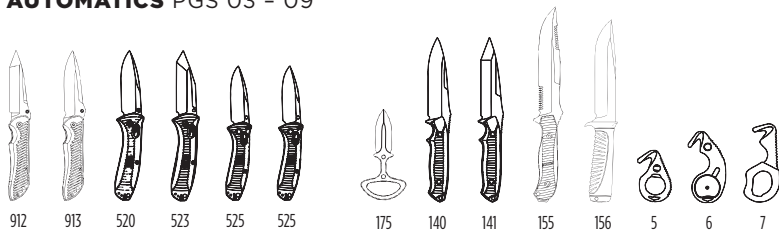
THE RIGHT STUFF

BLACKCLASS



5000 5300 6150 9050 5500 3300 9100 9500 9130 9500 2550 3550

AUTOMATICS PGS 03 - 09



912 913 520 523 525 525

FOLDERS PGS 10 - 13

175 140 141 155 156 5 6 7

FIXED BLADES PGS 13 - 19

BLUECLASS



672 610 615 710 530 550 555 551 556 553 557 220 100

FOLDERS/FIXED BLADES PGS 20 - 29

EXTRAS

WHAT'S MAKES A GREAT KNIFE... PG 02

FORWARD THINKING PG 31

TESTED TOUGHER PG 32

FUNCTIONAL INNOVATION PGS 33 - 35

ADVANCED MATERIALS PGS 36 - 38 (MODEL FEATURE CODES ON PG 38)

EXTRAS/ACCESSORIES PGS 39 - 42

WARRANTY/TRAINING AND TRAINERS PGS 42 - 44

NSN/GSA

9100SBT-NSN 1095-01-456-4457 PG 08

140SBT-NSN 1095-01-466-8569 PG 14

7HOOK-NSN 4240-01-543-9618 PG 18

550S-GSA 5110-01-451-0707 PG 24

550SBT-GSA 5110-01-452-2215 PG 24

910SBT-GSA 5110-01-432-6191 (NOT PICTURED IN CATALOG)

WHAT MAKES A GREAT KNIFE A BETTER TOOL?

Not all knives are created equal.
NOT EVEN CLOSE!

Considering what you do for a living— Can you really afford not to compare all the features and facts? Too often professionals like yourself take their knife choice for granted and consequently have performance issues down the road, which can be as minor as a simple inconvenience, or as major as a total tool failure causing severe injury or worse.

Seek out reliable information on the knives through other user testimonials, available technical data, and reputable product reviews or product dealers. The demanding world you work in presents many challenges, some predictable, and some not. Consider the following when it comes to your choice of cutting tools and make sure you're getting the best tool for the job.

THESE ARE ALL VIABLE QUESTIONS AND CONCERNS WHEN IT COMES TO SELECTING AN ESSENTIAL PIECE OF YOUR GEAR. OUR HOPE IS TO HELP YOU CHOOSE THE BEST TOOL FOR YOUR JOB. IF THAT ENDS UP BEING A BENCHMADE WE WOULD BE HONORED, AND SAY THANK YOU.

DESIGN

Is it a practical one, and will it enhance my abilities? Will the blade shape offer good utility? **Does it fit the hand properly?** Will it support the desired cutting tool needs? **Can it be attached or carried in a useful manner?**

MECHANISM

Can the blade be opened and closed easily, and with one hand? Will it open and close intuitively without having to focus on the task? **Can the blade be opened in a struggle or physical limitation?** Does it stay open or closed reliably? **Is the mechanism proven to enhance function, or merely enhance manufacturer sales?**

QUALITY

Does it feel solid and well built? Does the blade wobble? **Do all of the components fit together properly?** Will the manufacturer warranty any issues and do they stand behind their products?

MATERIALS

Do the materials used enhance performance, or offer improved levels of performance over others? Are the materials strong, durable and offer added value? **Is the blade steel tough enough, and how long will the edge stay sharp?** Are the materials used truly what the knife manufacturer says they are?

○ **5000** AUTO-PRESIDIO®
5300 AUTO-PRESIDIO® TANTO

- Patented Bi-Directional Grip Pattern Provides Superior Grip
- Non-Reflective Components for Tactical Applications
- Automatic AXIS® Allows for Ambidextrous Actuation



5000/5300 DESIGNER: Mel Pardue **LOCKING MECHANISM:** Auto AXIS Pull Release with Integrated Safety **BLADE STYLE & OPENER:** 5000 Drop-Point; 5300 Tanto; AXIS Button Release w/ Auto Open **BLADE STEEL:** 154CM Stainless Steel (58-61HRC) **BLADE LENGTH:** 3.47" (8.81cm) **BLADE THICKNESS:** 0.125" (3.175mm) **OPEN:** 8.25" (20.96cm) **CLOSED:** 4.87" (12.37cm) **WEIGHT:** 5.60oz (158.76gm) **HANDLE SPEC:** Black Anodized; Machined 6061 T-6 Aluminum; Double 420J Liners; Movable Steel Carry-Clip **HANDLE THICKNESS:** 0.64" (1.625cm) **COUNTRY OF ORIGIN:** USA **BLADE CONFIGURATIONS:** 5000 \$235, 5000SBK \$247, 5000T \$140, 5300 \$235, 5300SBK \$247

NOTE: Also available in non-auto folder (see page 12)



NEW

6150 MINI-AUTORUKUS®

PARDUE design

If you thought the ruckus was over, think again. It is now available in a slightly smaller handful of cutting prowess in the Mini-Auto Rukus. Same unmatched AXIS® mechanics combined with auto open function. Two-part G10 and Micarta handle scales are shaped to fill the grip and let you do what you need to. The 6150 is tough to pass up.

- Drop-Point Blade Shape
- Components are Non-Reflective
- Auto-AXIS® Opener Mechanism
- Patented Integrated Safety



6150 DESIGNER: Neil Blackwood **LOCKING MECHANISM:** Auto AXIS® Pull Release with Integrated Safety **BLADE STYLE & OPENER:** Utility Drop-Point, AXIS Button Release w/Auto Open **BLADE STEEL:** S30V Stainless Steel (58-60HRC) **BLADE LENGTH:** 3.40" (8.63cm) **BLADE THICKNESS:** 0.121" (3.07mm) **OPEN:** 8.50" (21.59cm) **CLOSED:** 5.10" (12.95cm) **WEIGHT:** 5.93oz (168.11gm) **HANDLE SPECS:** Black G10 and Olive Drab Micarta Scales, Double Thick 410 Stainless Steel Liners, Movable Black Stainless Steel Carry-Clip **HANDLE THICKNESS:** 0.650" (16.51mm) **COUNTRY OF ORIGIN:** USA **BLADE CONFIGURATIONS:** **6150** \$260, **6150SBK** \$272





SPEC OPS

SPEC OPS 35MM

9050 AFO

BENCHMADE^{design}

- Machined and Bead-Blasted Handle for Amazing Grip
- Integrated Safety Improves Protection when Open and Closed
- Drop-Point Blade for Wide Variety of Applications
- Large Finger Guard Enhances Safety

SHEATH FRONT



SHEATH BACK
W/ MALICE CLIP



NEW STYLE POUCH/SHEATH
IS MOLLE® COMPATIBLE.
(INCLUDED W/ KNIFE)



9050SBK

9050DESIGNER: Benchmade **LOCK MECHANISM:** Button Auto with Integrated Safety **BLADE STYLE & OPENER:** Drop-Point; Auto Open **BLADE STEEL:** 154CM Stainless Steel Hardened to 58-61HRC **BLADE LENGTH:** 3.64" (9.25cm) **BLADE THICKNESS:** 0.125" (3.18mm) **OPEN:** 8.54" (21.69cm) **CLOSED:** 4.85" (12.32cm) **WEIGHT:** 5.30oz (150.25gm) **HANDLE SPEC:** Machined 6061 T-6 Aluminum; Movable Steel Carry-Clip; All Black Anodized **HANDLE THICKNESS:** 0.60" (1.52cm) **SHEATH:** MOLLE® Compatible Soft Sheath **COUNTRY OF ORIGIN:** USA **BLADE CONFIGURATIONS:** 9050SBK \$237

5500 MINI-AUTOPRESIDIO®

PARDUE^{design}

- Patented Bi-Directional Handle Tread Design
- All Components are Non-Reflective
- Drop-Point Blade Shape
- Patented Integrated Safety



5500

5500SBK

5500DESIGNER: Mel Pardue **LOCK MECHANISM:** Auto AXIS Pull Release with Integrated Safety **BLADE STYLE & OPENER:** Drop-Point; AXIS Button Release w/Auto Open **BLADE STEEL:** 154CM Stainless Steel (58-61HRC) **BLADE LENGTH:** 2.97" (7.54cm) **BLADE THICKNESS:** 0.115" (2.92mm) **OPEN:** 7.12" (18.08cm) **CLOSED:** 4.15" (10.54cm) **WEIGHT:** 3.70 oz. (104.89gm) **HANDLE SPEC:** Black Anodized Machined 6061 T-6 Aluminum; Double 420J Liners; Movable Steel Carry-Clip **HANDLE THICKNESS:** 0.497" (12.62mm) **COUNTRY OF ORIGIN:** USA **BLADE CONFIGURATIONS:** 5500 \$210, 5500S \$210, 5500SBK \$222

NOTE: Also available in non-auto folder (see page 13)



NEW

3300 INFIDEL®

MCHENRY design

For the non-believer. Believe. The Infidel is every bit the serious tool it appears to be. Multiple patents on the inner workings ensure unmatched in and out OTF automatic function. Its double-edged spear-point blade gets plenty sharp, too. What else can you call such a knife.

- Ambidextrous Function
- Overall Rugged Construction
- Double Action Slide Release
- Integrated Cleaning Port
- Deep Pocket Carry-Clip



3300DESIGNER: Bill McHenry **LOCKING MECHANISM:** Patent Pending Double Action Out-the-Front Auto **BLADE STYLE & OPENER:** Double Edge Spear-Point; Ambidextrous Thumb-Slide **BLADE STEEL:** D2 Tool Steel (60-62HRC) **BLADE LENGTH:** 3.91" (9.93cm) **BLADE THICKNESS:** 0.118" (2.99mm) **OPEN:** 8.91" (22.63cm) **CLOSED:** 5.00" (12.70cm) **WEIGHT:** 4.90oz (138.91gm) **HANDLE SPEC:** Black Anodized, Machined 6061 T-6 Aluminum, Removable Deep Pocket Carry-Clip **HANDLE THICKNESS:** 0.59" (1.49cm) **COUNTRY OF ORIGIN:** USA **BLADE CONFIGURATIONS:** 3300 \$450

● 9100&9130 AUTOSTRYKER® 9500&9530 MINI-AUTOSTRYKER

BENCHMADE^{design}

9100SBT-NSN 1095-01-456-4457

- BK1 Blade Coating Provides Unrivaled Blade Protection
- Non-Reflective Components for Tactical Applications
- Tanto Blade Shape has Piercing Power
- Thick Blade Spine Absorbs Shock, Enhances Tip Strength



9100 & 9130DESIGNER: Benchmade **LOCKING MECHANISM:** Button Auto with Integrated Safety **BLADE STYLE & OPENER:** Model 9100- Tanto; Model 9130- Spear-Point; Opener: Auto Open **BLADE STEEL:** 154CM Stainless Steel (58-61HRC) **BLADE LENGTH:** 3.70" (9.40cm) **BLADE THICKNESS:** 0.120" (3.05mm) **OPEN:** 8.25" (20.96cm); **CLOSED:** 4.68" (11.89cm) **WEIGHT:** 3.90oz (110.56gm) **HANDLE SPECS:** Machined 6061 T-6 Aluminum; Removable Steel Carry-Clip; All Black Anodized **HANDLE THICKNESS:** 0.50" (1.27cm) **COUNTRY OF ORIGIN:** USA
BLADE CONFIGURATIONS: 9100SBK \$242, 9130SBK \$242

9500 & 9530DESIGNER: Benchmade **LOCKING MECHANISM:** Button Auto with Integrated Safety **BLADE STYLE & OPENER:** Model 9500- Tanto; Model 9530- Spear-Point; Opener: Auto Open **BLADE STEEL:** 154CM Stainless Steel (58-61HRC) **BLADE LENGTH:** 2.95" (7.49cm) **BLADE THICKNESS:** 0.100" (2.54mm) **OPEN:** 7.21" (18.31cm) **CLOSED:** 4.26" (10.82cm) **WEIGHT:** 2.90oz (82.21gm) **HANDLE SPECS:** Machined 6061 T-6 Aluminum; Removable Steel Carry-Clip; All Black Anodized **HANDLE THICKNESS:** 0.47" (1.19cm) **COUNTRY OF ORIGIN:** USA
BLADE CONFIGURATIONS: 9500SBK \$202, 9530SBK \$202

2550 MINIREFLEX™

BENCHMADE design

- Large Finger Grooves for Added Protection
- Drop-Point Blade Shape
- Carry-Clip Placement Allows for Discreet Carry

2550SBK

2550

2550DESIGNER: Benchmade **LOCKING MECHANISM:** Button Auto with Integrated Safety
BLADE STYLE & OPENER: Utility Drop-Point; Auto Open **BLADE STEEL:** 154CM Stainless Steel Hardened to 58-61HRC **BLADE LENGTH:** 3.16" (8.03cm) **BLADE THICKNESS:** 0.100" (2.54mm) **OPEN:** 7.32" (18.59cm) **CLOSED:** 4.16" (10.57cm) **WEIGHT:** 2.70oz (76.54gm)
HANDLE SPECS: Machined 6061 T-6 Alum.; Removable Steel Carry-Clip; Black Anodized
HANDLE THICKNESS: 0.47" (1.19cm) **COUNTRY OF ORIGIN:** USA
BLADE CONFIGURATIONS: 2550 \$190, 2550SBK \$202

3550

PARDUE design

- Slim Profile Makes for Ease of Carry
- Non-Reflective Components for Tactical Applications
- Symmetrical Handle Design has Universal Grip
- Spear-Point Blade Offers Enhanced Tip Qualities

3550SBK

3550

3550DESIGNER: Mel Pardue **LOCKING MECHANISM:** Button Auto with Integrated Safety
BLADE STYLE & OPENER: Spear-Point; Opener: Auto Open **BLADE STEEL:** 154CM Stainless Steel Hardened to 58-61HRC **BLADE LENGTH:** 2.98" (7.57cm) **BLADE THICKNESS:** 0.090" (2.29mm) **OPEN:** 7.10" (18.03cm) **CLOSED:** 4.10" (10.41cm) **WEIGHT:** 2.80oz (79.38gm)
HANDLE SPECS: Machined 6061 T-6 Aluminum; Removable Steel Carry-Clip; Black Anodized
HANDLE THICKNESS: 0.47" (1.19cm) **COUNTRY OF ORIGIN:** USA
BLADE CONFIGURATIONS: 3550 \$190, 3550SBK \$202



FACTICAL 35MM

FACTICAL 35MM

FACTICAL 35MM

NEW
912/913 NITROUS™ STRYKER®
PARDUE design

The Strykers just went high-speed! For openers, this year we injected the Nitrous assist to get you off the line that much quicker. The G10 handle scales have been enhanced with a tactile grip pattern, too. And, with two blade styles to choose from the 912 and 913 should fit the profile for everything tactical.

- Superior Quality D2 Tool Steel
- Double Titanium Locking-Liners
- G10 Textured Handle Scales
- Two Blade Style Options
- Nitrous Assist Opening Mechanism



TORSION IS CREATED BY SLOTTING THE LINERS, THE NITROUS TORSION ARMS PROPEL BLADE OPEN WITH EASE. (MORE ON PAGE 34)

912DESIGNER: Benchmade **LOCKING MECHANISM:** Modified Locking-Liner w/Nitrous™
BLADE STYLE & OPENER: Modified Tanto, Ambidextrous Thumb-Stud **BLADE STEEL:** D2 Tool Steel (60-62HRC) **BLADE LENGTH:** 3.70" (9.40cm) **BLADE THICKNESS:** 0.125" (2.46mm)
OPEN: 8.25" (20.96cm) **CLOSED:** 4.68" (11.89cm) **WEIGHT:** 3.80oz (108gm) **HANDLE SPECS:** Black G10 Scales, Double Titanium Liners, Removable Steel Carry-Clip **HANDLE THICKNESS:** 0.48" (1.20cm) **COUNTRY OF ORIGIN:** USA
BLADE CONFIGURATIONS: **912D2** \$150, **912SBKD2** \$162

913DESIGNER: Benchmade **LOCKING MECHANISM:** Modified Locking-Liner w/Nitrous™
BLADE STYLE & OPENER: Modified Spear-Point, Ambidextrous Thumb-Stud **BLADE STEEL:** D2 Tool Steel (60-62HRC) **BLADE LENGTH:** 3.70" (9.40cm) **BLADE THICKNESS:** 0.125" (2.46mm)
OPEN: 8.25" (20.96cm) **CLOSED:** 4.68" (11.89cm) **WEIGHT:** 3.80oz (108gm) **HANDLE SPECS:** Black G10 Scales, Double Titanium Liners, Removable Steel Carry-Clip **HANDLE THICKNESS:** 0.48" (1.20cm) **COUNTRY OF ORIGIN:** USA
BLADE CONFIGURATIONS: **913D2** \$150, **913SBKD2** \$162

● **520 PRESIDIO®**
523 PRESIDIO® TANTO

- Patented **AXIS®** Mechanics
- One-Hand Ambidextrous Function
- Multi-Directional Positive Grip
- Fully-Adjustable Blade Pivot



523SBK

520SBK

520T (RED HANDLE COLOR)

520/523 DESIGNER: Mel Pardue **LOCKING MECHANISM:** AXIS Lock **BLADE STYLE & OPENER:** 520 Drop-Point; 523 Tanto; Ambidextrous Thumb-Studs **BLADE STEEL:** 154CM Stainless Steel (58-61HRC) **BLADE LENGTH:** 3.42" (8.69cm) **BLADE THICKNESS:** 0.125" (3.17mm) **OPEN:** 8.29" (21.07cm) **CLOSED:** 4.87" (12.37cm) **WEIGHT:** 520 5.68oz (161.03gm); 523 5.84oz (165.56gm) **HANDLE SPEC:** Black Anodized; Machined 6061 T-6 Aluminum; Double 420J Liners; Movable Steel Carry-Clip **HANDLE THICKNESS:** 0.64" (1.625cm) **COUNTRY OF ORIGIN:** USA **BLADE CONFIGURATIONS:** 520 \$180, 520SBK \$192, 520T (440C Steel) \$120, 523 \$180, 523SBK \$192



525 MINIPRESIDIO®

PARDUE design

- Machined Aluminum Handles with Multi-Directional Positive Grip
- Optimally Sized for Versatile Carry
- Patented AXIS® Mechanics
- Movable Carry-Clip



525DESIGNER: Mel Pardue **LOCKING MECHANISM:** AXIS Lock **BLADE STYLE & OPENER:** Drop-Point, Ambidextrous Thumb-Studs **BLADE STEEL:** 154CM Stainless Steel (58-61HRC) **BLADE LENGTH:** 2.97" (7.59cm) **BLADE THICKNESS:** 0.115" (2.92mm) **OPEN:** 7.12" (18.08cm) **CLOSED:** 4.15" (10.54cm) **WEIGHT:** 3.70oz (104.89gm) **HANDLE SPECS:** Black Anodized; Machined 6061 T-6 Aluminum; Double 420J Liners; Movable Steel Carry-Clip **HANDLE THICKNESS:** 0.545" (13.84mm) **COUNTRY OF ORIGIN:** USA **BLADE CONFIGURATIONS:** **525** \$165, **525S** \$165, **525SBK** \$177



175 CBK

BENCHMADE design

- Double Edged for Ease of Penetration
- Thick Blade Adds Heft, Durability and Strength
- Sheath Designed for Versatile Carry Options
- Large, Open Handle Provides Ample Gripping Space



175DESIGNER: Benchmade **BLADE STYLE:** Double Edge Spear-Point with a Chisel Ground Edge **BLADE STEEL:** 440C Stainless Steel (58-60HRC); BK1® Coated **BLADE LENGTH:** Length: 2.50" (6.35cm) **BLADE THICKNESS:** 0.125" (3.175) **WEIGHT:** 2.32oz (65.77gm) **HANDLE SPECS:** Full-Tang **HANDLE THICKNESS:** 0.18" (4.57mm) **SHEATH:** Molded Kydex®/Thermoplastic; Reversible Belt-Clip **OVERALL LENGTH:** 5.47" (13.893cm) **COUNTRY OF ORIGIN:** USA **BLADE CONFIGURATIONS:** **175BK** \$87

NOTE: Sheath features removable steel carry-clip to fit up to 2-inch duty belt.

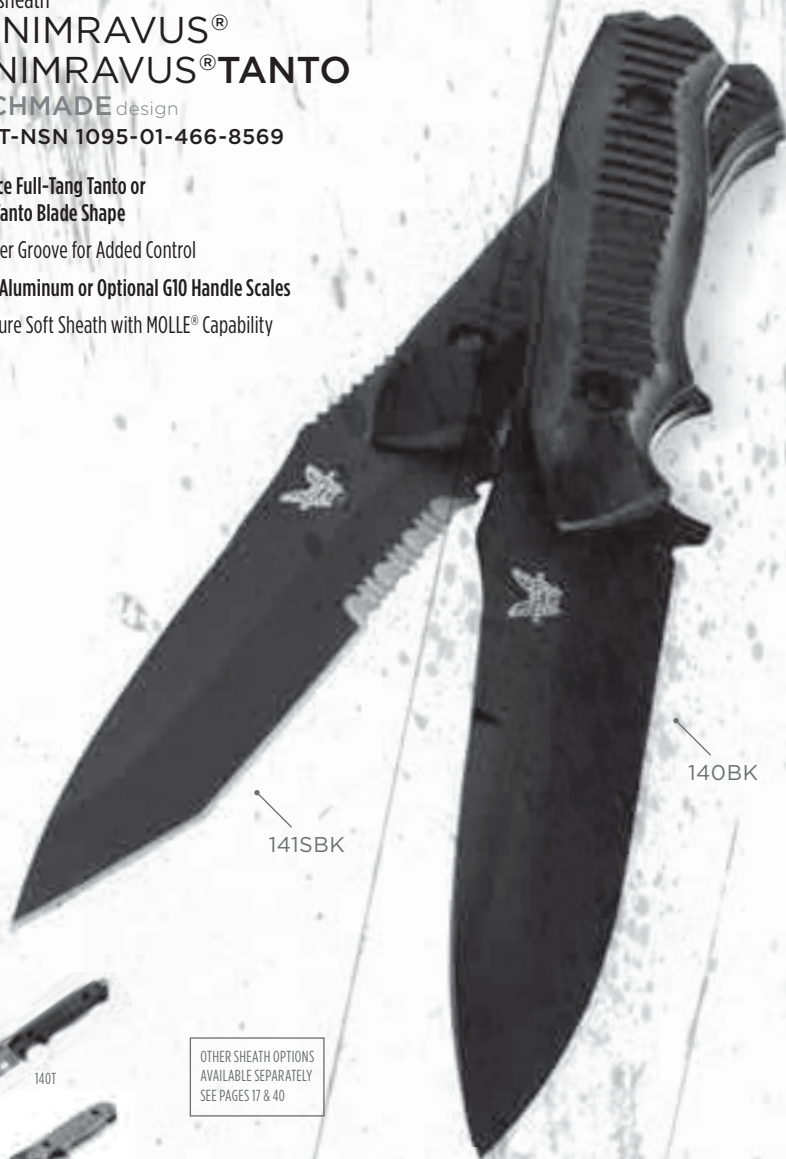
NEW sheath

140 NIMRAVUS® 141 NIMRAVUS® TANTO

BENCHMADE design

140SBT-NSN 1095-01-466-8569

- Single Piece Full-Tang Tanto or Modified Tanto Blade Shape
- Large Finger Groove for Added Control
- Machined Aluminum or Optional G10 Handle Scales
- Multi-Feature Soft Sheath with MOLLE® Capability



141SBK

140BK



140T



140SBKSN



141SBKSN

OTHER SHEATH OPTIONS
AVAILABLE SEPARATELY
SEE PAGES 17 & 40



140/141 SN AND ADC MODELS COME
WITH SAND OR FOLIAGE GREEN
SHEATHS RESPECTIVELY



140/141 COMES STANDARD W/
BLACK SHEATH

140 DESIGNER: Benchmade **BLADE STYLE:** Drop-Point **BLADE STEEL:** 154CM Stainless Steel (58-61HRC) or D2 Tool Steel (60-62HRC) **BLADE LENGTH:** 4.50" (11.43cm) **BLADE THICKNESS:** 0.115" (2.92mm) **WEIGHT:** 6.20oz (175gm) **HANDLE SPECS:** Full-Tang; Black Anodized Machined 6061 T-6 Aluminum **HANDLE THICKNESS:** 0.58" (1.48cm) **SHEATH:** Multi-Function Soft Sheath, Nylon **SHEATH WEIGHT:** 5.00oz (141.75gm) **OVERALL LENGTH:** 9.45" (24.00cm)
COUNTRY OF ORIGIN: USA
BLADE CONFIGURATIONS: 140BK \$175, 140SBK \$175, 140BKD2 \$185, 140SBKD2 \$185, 140SBKSN \$190, 140SBK-ADC \$190, 140T \$130

141 DESIGNER: Benchmade **BLADE STYLE:** Tanto **BLADE STEEL:** 154CM Stainless Steel (58-61HRC) or D2 Tool Steel (60-62HRC) **BLADE LENGTH:** 4.50" (11.43cm) **BLADE THICKNESS:** 0.115" (2.92mm) **WEIGHT:** 5.86oz (161.13gm) **HANDLE SPECS:** Full-Tang; Black Anodized Machined 6061 T-6 Aluminum **HANDLE THICKNESS:** 0.58" (1.48cm) **SHEATH:** Multi-Function Soft Sheath, Nylon **SHEATH WEIGHT:** 5.00oz (141.75gm) **OVERALL LENGTH:** 9.45" (24.00cm)
COUNTRY OF ORIGIN: USA
BLADE CONFIGURATIONS: 141BK \$175, 141SBK \$175, 141BKD2 \$185, 141SBKD2 \$185, 141SBKSN \$190, 141SBK-ADC \$190



ALPHA TEAM 35MM

156 CSK

BENCHMADE design

- Single Piece Full-Tang Clipped Blade Shape
- Thicker Blade Construction for Added Tool Strength
- Tactile Soft Surfacd Handle Grip Pattern
- Patented BILT® System Handle Assembly



156DESIGNER: Benchmade **BLADE STYLE:** Combat/Survival Bowie **BLADE STEEL:** D2 Tool Steel (60-62HRC), BT Coated **BLADE LENGTH:** 6.10" (15.50cm) **BLADE THICKNESS:** 0.175" (4.45mm) **WEIGHT:** 9.60oz (272.16gm) **HANDLE SPECS:** Black Kraton® Overlay with BILT™ System **HANDLE THICKNESS:** 0.78" (1.97cm) **SHEATH:** Multi-Function Soft Sheath, Removable Pouch, Black Nylon **SHEATH WEIGHT:** 6.50oz (184.27gm) **OVERALL LENGTH:** 10.90" (27.69cm) **COUNTRY OF ORIGIN:** USA
BLADE CONFIGURATIONS: 156BT \$140, 156SBT \$140

NEW sheath

155 FIXED PRESIDIO®

OSBORNE design

- Single Piece Full-Tang Blade Construction
- Machined Aluminum Handles with Multi-Directional Positive Grip
- Modified Clip-Point Blade Shape with Generous Utility
- MOLLE® Compatible Sheath



155DESIGNER: Warren Osborne **BLADE STYLE:** Modified Clip-Point **BLADE STEEL:** 154CM Stainless Steel (58-61HRC), BK1 Coated **BLADE LENGTH:** 6.32" (16.05cm) **BLADE THICKNESS:** 0.180" (4.57mm) **WEIGHT:** 10.10oz (286.33gm) **HANDLE SPECS:** Full Tang, Black Anodized 6061 T-6 Aluminum Scales **HANDLE THICKNESS:** 0.60" (15.24mm) **SHEATH:** Multi-Function Soft Sheath, Black Nylon **SHEATH WEIGHT:** 6.50oz (184.27gm) **OVERALL LENGTH:** 11.40" (28.96cm) **COUNTRY OF ORIGIN:** USA
BLADE CONFIGURATIONS: 155BK \$232, 155SBK \$232, 155SBK-ADC \$232 (Foliage Green)

NEW features

SOFT SHEATHS & ATTACHMENT SYSTEMS

BENCHMADE design



140/141 MOLLE® FIXED SHEATH

Now the battle tested, performance proven Nimravus® has adapted to its new environment with a MOLLE® compatible sheath. Knife stows reversible so sheath is totally universal. One inch webbing and a Malice clip make attachment simple and secure. Available in standard issue tactical black (140/141 Presidio), coyote color (140/141 sand models), and foliage green.

A. **983468** Black MOLLE® Fixed Sheath \$50 B. **983469** Coyote MOLLE® Fixed Sheath \$50 C. **983854** Foliage Green MOLLE® Fixed Sheath \$50

MOLLE® FOLDER POUCHSHEATH

These duty tough, snap-over hood closure pouches secure folding knives, flashlights or even single pistol mags well. The Malice clip (included) provides Molle attachment, or can be used for belt carry. An elasticized expansion cavity secures the cargo snug. Available in standard issue tactical black (9050 AFO), coyote color, and foliage green.

D. **983466** Black MOLLE® Folder Pouch \$20 E. **983467** Coyote MOLLE® Folder Pouch \$20 F. **983853** Foliage Green MOLLE® Folder Pouch \$20

SHOOK POUCH

The 5 Rescue Hook has become an essential tool in many service circles, and now you can attach it to your Molle gear. A Velcro hooded closure secures the 5 in its pouch for secure carry and rapid deployment. The sheath can also be worn on a belt. Available in standard issue tactical black (5 W, 5 BLKW), coyote color, and foliage green.

G. **981494** Black MOLLE® 5 Hook Pouch \$8 H. **983855** Coyote MOLLE® 5 Hook Pouch \$8 I. **983856** Foliage Green MOLLE® 5 Hook Pouch \$8

MALICE CLIPS

Injection molded connecting-clip to attach sheaths/pouches to Molle systems, or to use as a belt-loop style carry. Available in two sizes, black only.

J. **983550** Small Malice Clip (3.00") \$1.50 K. **983551** Large Malice Clip (4.75") \$2

NEW

7HOOK

BENCHMADE^{design}

7HOOK-NSN 4240-01-543-9618

The 7 Hook is the latest in our line of professional grade hooks. Flak jackets, tubular webbing, leather boots, Kevlar, seatbelts, and para-cords are just some of the materials you can cut through quickly and reliably in an emergency situation. The 7 Hook is fast becoming a necessity, not an option.

- Larger Handle w/ Vinyl Coating for Grip
- Multiple Grip Options for Specific Application
- Multiple Carry Options Available

NOTE:

OTHER SHEATH OPTIONS
AVAILABLE SEPARATELY
SEE PAGE 40

ONE CHANCE ONE CUT™



WWW.7HOOK.COM

7DESIGNER: Benchmade **BLADE STEEL:** 440C Stainless Steel (58-60HRC) **BLADE OPENING:** 0.50" (1.27cm) **BLADE THICKNESS:** 0.115" (2.92mm) **WEIGHT:** 1.50oz (43gm) **HANDLE SPECS:** Black Oxide Finish w/ Grit Dipped Vinyl Handle Coating **SOFT SHEATH:** Nylon Webbing Pouch w/ Velcro® Closure; Retention Band; MOLLE® Compatible **SHEATH WEIGHT:** 1.60oz (45.36gm) **OVERALL LENGTH:** 4.30" (10.92cm) **COUNTRY OF ORIGIN:** USA
BLADE CONFIGURATIONS: **7BLKW** (Black Sheath) \$40,
7BLKWADC (Foliage Green Sheath) \$40, **7BLKWSN** (Coyote Brown Sheath) \$40

5 RESCUEHOOK

BENCHMADE design

- Unparalleled Rapid Response Cut Ability with a Safer Deployment Design
- Durable Edge Quality and Versatile Design
- Multiple Carry Options Available



CUTS QUICKLY, SAFELY AND EFFECTIVELY WITH PULLING MOTION

#981607

#981608



OPTIONAL LASH-TAB CARRY CLIP ASSEMBLY AVAILABLE SEPARATELY

STANDARD HARD SHEATH WITH TETHER (TETHER NOT PICTURED)

STANDARD SOFT SHEATH



NOTE:
OTHER SHEATH OPTIONS AVAILABLE SEPARATELY SEE PAGES 17 & 40

5 BLK

5

5 DESIGNER: Benchmade **BLADE STEEL:** 440C Stainless Steel (58-60HRC) **BLADE OPENING:** 0.50" (1.27cm) **BLADE THICKNESS:** 0.115" (2.92mm) **WEIGHT:** 1.20oz (34gm) **HANDLE SPECS:** Finger Hole 1.12" (2.85cm) **SOFT SHEATH:** Nylon Webbing Pouch/Velcro® Closure; MOLLE® Compatible **HARD SHEATH:** Molded Delrin® Snap-Fit (Varied Carry Options Available) **SOFT SHEATH WEIGHT:** 0.60oz (17gm) **HARD SHEATH WEIGHT:** 0.36oz (10.21gm) **OVERALL LENGTH:** 2.90" (7.37cm) **COUNTRY OF ORIGIN:** USA **BLADE CONFIGURATIONS:** **5** (Hard Sheath) \$38, **5BLK** (Hard Sheath) \$35, **5W** (Soft Sheath) \$28, **5BLKW** (Black Soft Sheath) \$25, **5BLKWSN** (Coyote Soft Sheath) \$25, **5BLKWADC** (Foliage Green Soft Sheath) \$25

6H20 RESCUEHOOK

BENCHMADE design

- Larger Handle Area for Heavy Gloved Grip
- Bright Yellow Handle for Improved Visibility
- Multiple Carry Options Available



6H20 →

6H20 DESIGNER: Benchmade **BLADE STEEL:** X15 T.N Stainless Steel (58-60HRC) **BLADE OPENING:** 0.50" (1.27cm) **BLADE THICKNESS:** 0.115" (2.92mm) **WEIGHT:** 2.30oz (65gm) **HANDLE SPECS:** 6H20 Steel w/ Yellow Kydex Overlay **HARD SHEATH:** Molded Delrin Snap-Fit (Varied Carry Options Available) **HARD SHEATH WEIGHT:** 0.36oz (10.21gm) **OVERALL LENGTH:** 4.25" (10.80cm) **COUNTRY OF ORIGIN:** USA **BLADE CONFIGURATIONS:** **6H20** (Includes Hard Sheath) \$53

INFANTRY 35MM

INFANTRY 35MM



NEW

672 APPARITION®

OSBORNE design

Target acquired! -over- Looks like everything you were looking for. -over- Speed, agility and built to go the distance. -over- It goes by name of 672 and uses the removable assist opener system to get around. -over- Can we build one for you? -copy that...over and out-

- Option of Assist or Manual Opening
- Hollowground Blade
- Locking-Liner Mechanism
- Removable Carry-Clip



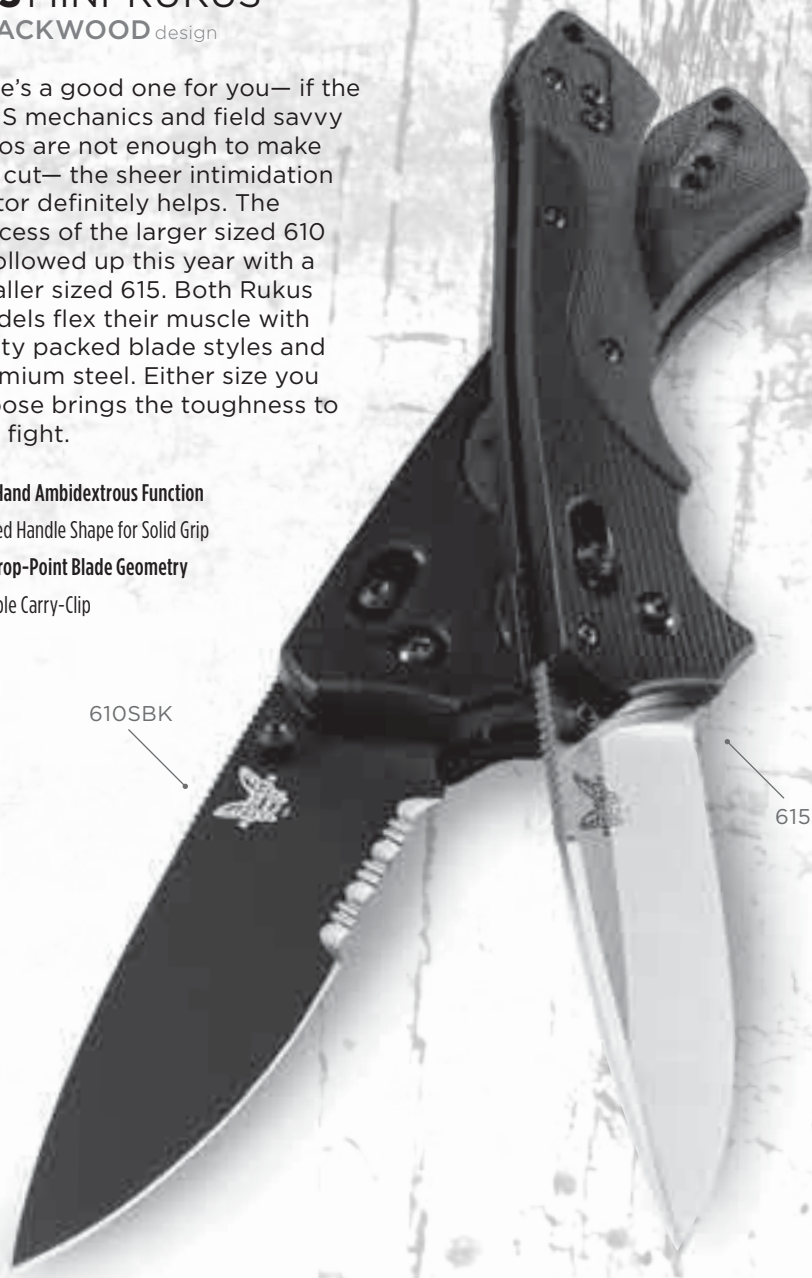
672 OPTIMISER® GIVES THE USER THE INDIVIDUAL CHOICE OF ASSIST OR MANUAL BLADE OPENING. SIMPLY REMOVE TORSION BAR FOR NON-ASSIST OPENING (MORE ON PAGE 35)

672DESIGNER: Warren Osborne **LOCKING MECHANISM:** Modified Locking-Liner w/Optimiser
BLADE STYLE & OPENER: Hollowground Wharncliff, Thumb-Stud **BLADE STEEL:** D2 Tool Steel (60-62HRC) **BLADE LENGTH:** 3.30" (8.40cm) **BLADE THICKNESS:** 0.125" (3.18mm)
OPEN: 7.70" (19.56cm) **CLOSED:** 4.40" (11.18cm) **WEIGHT:** 4.24oz (120.20gm) **HANDLE SPECS:** Black G10 Scales; Double 420J Stainless Steel Liners; Removable Steel Carry-Clip **HANDLE THICKNESS:** 0.47" (11.95mm) **COUNTRY OF ORIGIN:** USA
BLADE CONFIGURATIONS: 672 \$160, 672SBX \$165

NEW
610 RUKUS®
615 MINI-RUKUS®
BLACKWOOD design

Here's a good one for you— if the AXIS mechanics and field savvy ergos are not enough to make the cut— the sheer intimidation factor definitely helps. The success of the larger sized 610 is followed up this year with a smaller sized 615. Both Rukus models flex their muscle with utility packed blade styles and premium steel. Either size you choose brings the toughness to any fight.

- One-Hand Ambidextrous Function
- Profiled Handle Shape for Solid Grip
- Full Drop-Point Blade Geometry
- Movable Carry-Clip



610SBK

615

610DESIGNER: Neil Blackwood **LOCKING MECHANISM:** AXIS® Lock **BLADE STYLE & OPENER:** Utility Drop-Point, Ambidextrous Dual Thumb-Studs **BLADE STEEL:** S30V Premium Stainless Steel (58-60HRC) **BLADE LENGTH:** 4.25" (10.80cm) **BLADE THICKNESS:** 0.150" (3.82mm) **OPEN:** 10.20" (25.91cm) **CLOSED:** 5.95" (15.12cm) **WEIGHT:** 7.86oz (222.83gm) **HANDLE SPECS:** Black G10 and Olive Drab Micarta Scales, Double 410 Stainless Steel Liners, Movable Black Stainless Steel Carry-Clip **HANDLE THICKNESS:** 0.786" (19.96mm) **COUNTRY OF ORIGIN:** USA **BLADE CONFIGURATIONS:** 610 \$250, 610SBK \$262

615DESIGNER: Neil Blackwood **LOCKING MECHANISM:** AXIS® Lock **BLADE STYLE & OPENER:** Utility Drop-Point, Ambidextrous Dual Thumb-Studs **BLADE STEEL:** S30V Premium Stainless Steel (58-60HRC) **BLADE LENGTH:** 3.40" (8.63cm) **BLADE THICKNESS:** 0.121" (3.07mm) **OPEN:** 8.50" (21.59cm) **CLOSED:** 5.10" (12.95cm) **WEIGHT:** 5.90oz (167.26gm) **HANDLE SPECS:** Black G10 and Olive Drab Micarta Scales, Double 410 Stainless Steel Liners, Movable Black Stainless Steel Carry-Clip **HANDLE THICKNESS:** 0.650" (16.51mm) **COUNTRY OF ORIGIN:** USA **BLADE CONFIGURATIONS:** 615 \$220, 615S \$220, 615SBK \$232



710

MCHENRY & WILLIAMS design

- Reverse Curve Blade Shape
- Larger Sized Folder
- Machined G10 Handle Scales



710DESIGNER: Bill McHenry & Jason Williams **LOCKING MECHANISM:** AXIS® Lock **BLADE STYLE & OPENER:** Modified Clip-Point; Dual Thumb Stud **BLADE STEEL:** D2 Tool Steel (60-62HRC) **BLADE LENGTH:** 3.90" (9.90cm) **BLADE THICKNESS:** 0.115" (2.92mm) **OPEN:** 8.80" (22.34cm) **CLOSED:** 4.90" (12.44cm) **WEIGHT:** 4.50oz (128gm) **HANDLE SPECS:** Black G10 Scales, Double 410 Stainless Steel Liners; Movable Steel Carry-Clip **HANDLE THICKNESS:** 0.48" (1.22cm) **COUNTRY OF ORIGIN:** USA
BLADE CONFIGURATIONS: **710D2** \$165, **710SBKD2** \$177



530

PARDUE design

- Less Than 2-Ounce Weight
- Ultra-Slim Profile
- One-Hand Ambidextrous Function
- Movable Carry-Clip



530DESIGNER: Mel Pardue **LOCKING MECHANISM:** AXIS® Lock **BLADE STYLE & OPENER:** Modified Spear-Point; Ambidextrous Thumb-Studs **BLADE STEEL:** 154CM Stainless Steel (58-61HRC) **BLADE LENGTH:** 3.25" (8.25cm) **BLADE THICKNESS:** 0.09" (2.28mm) **OPEN:** 7.42" (18.85cm) **CLOSED:** 4.17" (10.59cm) **WEIGHT:** 1.88oz (53.28gm) **HANDLE SPECS:** Noryl GTX® 830 Scales; Double 420J Liners; Removable Steel Carry-Clip **HANDLE THICKNESS:** 0.366" (0.930cm) **COUNTRY OF ORIGIN:** USA
BLADE CONFIGURATIONS: **530** \$100, **530SBK** \$112



NEW features

550HG GRIPTILIAN® 555HG MINI-GRIPTILIAN®

PARDUE design

550S-GSA 5110-01-451-0707

550SBT-GSA 5110-01-452-2215

Still every bit the field ready tools as always, the 550HG and 555HG have now been outfitted with hollowground blades and round thumb-hole openers. Few knives on the market today can compete head-to-head with the Griptilians for value-added performance.

Two Sizes Available

Ambidextrous Thumb-Hole Opener

Lightweight Molded Handle

Hollowground Blade

Multiple Configurations Available



550HG

555HGS



550T (RED HANDLE COLOR)



550SBKHGSL



550SBKHGOD

550HGDESIGNER: Mel Pardue **LOCKING MECHANISM:** AXIS® Lock **BLADE STYLE & OPENER:** Hollowground Modified Sheepfoot; Ambidextrous Functioning Thumb-Hole Opener **BLADE STEEL:** 154CM Stainless Steel (58-61HRC) **BLADE LENGTH:** 3.45" (8.76cm) **BLADE THICKNESS:** 0.115" (2.92mm) **OPEN:** 8.07" (20.50cm) **CLOSED:** 4.62" (11.73cm) **WEIGHT:** 3.25oz (92gm) **HANDLE SPECS:** Black Glass Fill Noryl GTX®/Color Valox®; Double 410 Stainless Steel Liners; Reversible Steel Carry-Clip **HANDLE THICKNESS:** 0.64" (1.63cm) **COUNTRY OF ORIGIN:** USA **BLADE CONFIGURATIONS:** 550HG \$100, 550SHG \$100, 550SBKHG \$112, 550SBKHGOD \$112, 550SBKHGSL \$122, 550SBKHGSN \$117, 550T (440C Stainless Steel) \$75

555HGDESIGNER: Mel Pardue **LOCKING MECHANISM:** AXIS® Lock **BLADE STYLE & OPENER:** Hollowground Modified Sheepfoot; Ambidextrous Functioning Thumb-Hole Opener **BLADE STEEL:** 154CM Stainless Steel (58-61HRC) **BLADE LENGTH:** 2.91" (7.38cm) **BLADE THICKNESS:** 0.100" (2.54mm) **OPEN:** 6.78" (17.21cm) **CLOSED:** 3.87" (9.82cm) **WEIGHT:** 2.56oz (73gm) **HANDLE SPECS:** Color Valox®; Double 410 Stainless Steel Liners; Reversible Steel Carry-Clip **HANDLE THICKNESS:** 0.51" (1.30cm) **COUNTRY OF ORIGIN:** USA **BLADE CONFIGURATIONS:** 555HG \$90, 555SHG \$90, 555SBKHG \$102, 555SBKHGOD \$102, 555SHG-BLU \$90, 555HGS-YEL \$90





VALD

MILITARY 35MM

551 GRIPTILIAN® 556 MINI-GRIPTILIAN®

PARDUE design

- Two Sizes Available
- Ambidextrous Thumb-Stud Opener
- Grip Textured Molded Handle
- Premium AXIS® Function
- Multiple Configurations Available

GRIP



551S

556



551T (RED HANDLE COLOR)



551SBKSL



551SBKSN

551 DESIGNER: Mel Pardue **LOCKING MECHANISM:** AXIS Lock **BLADE STYLE & OPENER:** Modified Drop-Point; Dual Thumb-Stud **BLADE STEEL:** 154CM Stainless Steel (58-61HRC) **BLADE LENGTH:** 3.40" (8.64cm) **BLADE THICKNESS:** 0.115" (2.92mm) **OPEN:** 6.07" (20.50cm) **CLOSED:** 4.62" (11.73cm) **WEIGHT:** 3.82oz (108.39gm) **HANDLE SPECS:** Black Glass Fill Noryl GTX®/Color Valox®; Double 410 Stainless Steel Liners; Reversible Steel Carry-Clip **COUNTRY OF ORIGIN:** USA **BLADE CONFIGURATIONS:** **551** \$100, **551S** \$100, **551SBK** \$112, **551SBKOD** \$112, **551SBKSL** \$122, **551SBKSN** \$117, **551T** (440C Stainless Steel) \$75

556 DESIGNER: Mel Pardue **LOCKING MECHANISM:** AXIS Lock **BLADE STYLE & OPENER:** Modified Drop-Point; Dual Thumb-Stud **BLADE STEEL:** 154CM Stainless Steel (58-61HRC) **BLADE LENGTH:** 2.91" (7.38cm) **BLADE THICKNESS:** 0.100" (2.54mm) **OPEN:** 6.78" (17.21cm) **CLOSED:** 3.87" (9.82cm) **WEIGHT:** 2.56oz (73gm) **HANDLE SPECS:** Color Valox®; Double 410 Stainless Steel Liners; Reversible Steel Carry-Clip **HANDLE THICKNESS:** 0.51" (1.30cm) **COUNTRY OF ORIGIN:** USA **BLADE CONFIGURATIONS:** **556** \$90, **556S** \$90, **556SBK** \$102, **556SBKOD** \$102, **556-BLU** \$90, **556S-BLU** \$90, **556-YEL** \$90, **556S-YEL** \$90



● **553** GRIPTILIAN® TANTO
557 MINI-GRIPTILIAN® TANTO
PARDUE design

- Two Sizes Available
- Enhanced Blade-Tip Strength Design
- One-Hand Ambidextrous Function
- Stainless Steel Liners
- Movable Carry-Clip



553S

557SBK

553 DESIGNER: Mel Pardue LOCKING MECHANISM: AXIS® Lock BLADE STYLE & OPENER: Tanto, Dual Thumb Stud BLADE STEEL: 154CM Stainless Steel (58-61HRC) BLADE LENGTH: 3.40" (8.64cm) BLADE THICKNESS: 0.115" (2.92mm) OPEN: 8.07" (20.50cm) CLOSED: 4.62" (11.73cm) WEIGHT: 3.88oz (110gm) HANDLE SPECS: Black Glass Fill Noryl GTX®/Color Valox®; Double 410 Stainless Steel Liners; Reversible Steel Carry-Clip HANDLE THICKNESS: 0.64" (1.63cm) COUNTRY OF ORIGIN: USA
BLADE CONFIGURATIONS: **553** \$100, **553S** \$100, **553SBK** \$112, **553SBKOD** \$112, **553SBKSN** \$117

557 DESIGNER: Mel Pardue LOCKING MECHANISM: AXIS® Lock BLADE STYLE & OPENER: Tanto, Dual Thumb Stud BLADE STEEL: 154CM Stainless Steel (58-61HRC) BLADE LENGTH: 2.91" (7.38cm) BLADE THICKNESS: 0.100" (2.54mm) OPEN: 6.78" (17.21cm) CLOSED: 3.87" (9.82cm) WEIGHT: 2.67oz (75.70gm) HANDLE SPECS: Color Valox®; Double 410 Stainless Steel Liners; Reversible Steel Carry-Clip HANDLE THICKNESS: 0.51" (1.30cm) COUNTRY OF ORIGIN: USA
BLADE CONFIGURATIONS: **557** \$90, **557S** \$90, **557SBK** \$102, **557SBKOD** \$102, **557SBKSN** \$107



● **220 FIXEDRESISTOR®**
SNODY design

- Thick, Full-Tang Blade
- Molded Belt Carry Sheath
- Skeletonized Handle



220DESIGNER: Mike Snody **BLADE STYLE:** Gotham Swedged Clip-Point **BLADE STEEL:** 154CM Stainless Steel (58-61HRC) **BLADE LENGTH:** 3.40" (8.64cm) **BLADE THICKNESS:** 0.160" (4.06mm) **WEIGHT:** 4.56oz (129.27gm) **HANDLE SPECS:** Full-Tang; Skeletonized G10 Scales **HANDLE THICKNESS:** 0.51" (12.95mm) **SHEATH:** Molded Kydex® w/Belt Loop **OVERALL LENGTH:** 7.45" (18.92cm) **COUNTRY OF ORIGIN:** USA **BLADE CONFIGURATIONS:** 220 \$150, 220SBK \$162

○ **100SH20**
BENCHMADE design

- Super Corrosion Resistant Blade Steel
- Multi-Feature Molded Sheath
- Safer Rounded Blade Tip



100SH20-BLK

100SBTH20-BLK

100SH20 MOLDED SHEATH
W/ATTACHMENT CLIP

100DESIGNER: Benchmade **BLADE STYLE:** Modified Sheep's Foot **BLADE STEEL:** X15 T.N Stainless Steel (58-60HRC) **BLADE LENGTH:** 3.23" (8.32cm) **BLADE THICKNESS:** 0.114" (2.90mm) **WEIGHT:** 4.00oz (128gm) **HANDLE SPECS:** Full-Tang; Day-glow Yellow Kydex® or Black G10 Scales **HANDLE THICKNESS:** 0.58" (1.48cm) **SHEATH:** Molded Kydex®/Thermoplastic; Reversible Lash Tab Carry-Clip **OVERALL LENGTH:** 7.50" (19.50cm) **COUNTRY OF ORIGIN:** USA
BLADE CONFIGURATIONS: 100SH20-BLK \$130, 100SBTH20-BLK \$140

CAVALRY 35MM



CAVALRY 35MM



FORWARD THINKING

It all starts with a commitment to innovation. And for us, it goes beyond simply being innovatively different— Benchmade continually strives to be innovatively better. We believe that when a customer chooses to purchase a Benchmade, they don't do so just to be different, they do so because they want the best. This mindset of innovating for improvement is alive and well throughout Benchmade, it goes into every design, and comes out of every product. Admittedly, it's definitely not the easiest way to make knives, but it's the only way we know how.

ENGINEERING

Rocket science? Ok, well almost. It all starts with a dedicated Engineering department hell bent on getting it right— before a milling machine ever starts. It means taking an often times custom design concept and unique designer personality, and then translating it into computer renderings and programs for a multitude of individual manufacturing processes. Our engineers are continually checking and rechecking for perfection, and we are fully integrated with our outside manufacturing partners to ensure our Benchmade quality standards are adhered to. From the

latest computer aided design (CAD) software and 3-D modeling technologies to just plain knife-know-how gained from years of experience, it's a test of wills. And when the final prototype is signed off on, the customer always wins.

MANUFACTURING

The Benchmade manufacturing arsenal contains ultra-modern laser cutters and machining centers dialed in for spot-on tolerances of 0.0005" on command. Our computerized machining centers offer the precision and control usually found only in the aerospace industry. Most of our products are hand assembled for a "go together" fit and finish typically seen only in a custom knife. But it's more than just having modern equipment, for Benchmade, it's having a workforce of dedicated and professionally skilled people knowing how to make it all work together. We also work with a specially select group of outside manufacturing partners, who are willing to go beyond working for us— they work with us to deliver the best product regardless of price point. It's a lot of effort for just a knife, which is why Benchmade knives aren't "just a knife"... they're engineered cutting tools founded on function, built for performance and recognized for both.



TESTED TOUGHER

More often than not, our toughest competitor is ourselves. We are relentless when it comes to making every effort so that our knives will perform better than you should ever need. Benchmade Knife Company arguably makes the best performing knives in the world.

To ensure that our products remain superior, we have instituted a process of applying our absolute technical superiority to each of our tactical products in some very purposeful ways. In addition, we solicit input from sources like you who rely on and use the tools under some of the toughest conditions possible. This collective effort helps to identify and define exactly what a tactical knife needs to do.

CUTTING EDGE

The tool must have the capacity to cut a variety of materials including heavy gauge, steel sheet metal and to then keep on cutting. The Benchmade process includes the ability to heat-treat the hardest of steels to not only maximize toughness, but also hold a shaving fine cutting edge.

RELIABLE FUNCTION

Locking/folding mechanisms must operate without fail in all conditions with extreme efficiency and durability. Field tested exposure to nature's elements like sand or dirt, heat, cold, snow, ice and water without hampering tool performance. The capability to open quickly and easily with either hand, and with heavy gloves is paramount. And bottom line, they need to last over the long haul.

FIELD TOUGHNESS

The knife needs to be able to pry and take heavy impact, that's why before we start field application cutting tests with one of our tactical folders, we pound it through a 55-gallon steel drum several times with a hammer. We isolate and test blade strength, total body strength, locking mechanism strength and overall impact resistance to the highest performance standards in the world.

PRACTICAL DESIGN

The knife must possess the proper size/weight to performance ratio. Benchmade tactical models not only perform the best, they are efficient in size and weight. Work smarter, not harder.

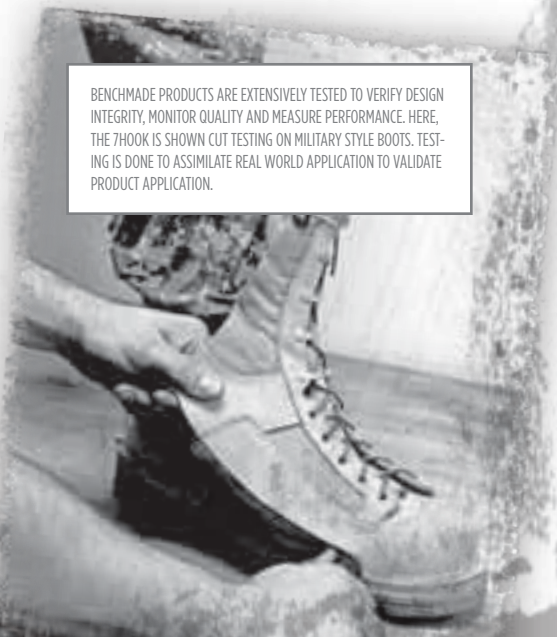
REALISTIC CARRY

Understand and integrate designs into gear efficiently for easy access and carry. This year our military customers will see new Molle compatible carry pouches and sheaths. These will be available in the tactical colors asked for by the operators including the extremely versatile Coyote tan.

DEVELOPMENT PROCESS

Our development process includes a very rigorous regiment of testing to ensure performance objectives are achieved. Benchmade tactical knives go through two testing protocols: The first, lab testing against other brands in which we strive to completely outclass any other brand in the world in locking mechanism breaking strength, cutting performance and component strength and durability. The other, even more respected by our special operations customers, is the field application testing conducted by our experienced tactical staff. For more information, ask one of the Benchmade tactical representatives for the field test overview of the model 5000 auto AXIS, arguably the best tactical knife in the world, and you will see why Benchmade remains the tactical tool of choice.

BENCHMADE PRODUCTS ARE EXTENSIVELY TESTED TO VERIFY DESIGN INTEGRITY, MONITOR QUALITY AND MEASURE PERFORMANCE. HERE, THE 7HOOK IS SHOWN CUT TESTING ON MILITARY STYLE BOOTS. TESTING IS DONE TO ASSIMILATE REAL WORLD APPLICATION TO VALIDATE PRODUCT APPLICATION.



FUNCTIONAL INNOVATION

Seems simple enough. You open the knife, you close the knife. But it's the mechanics of motion that happens in the process, which can make the difference between ordinary and extraordinary. Is the knife easy to actuate, can the knife be opened with one hand, is it ambidextrous, and will it be reliable when you need it most? These are all essential considerations when it comes to knife mechanics.

Benchmade offers several mechanisms, from patented exclusives including the unparalleled AXIS, to more traditional lock back designs. It all comes down to your level of desired function.

LOCKING MECHANISMS & ASSEMBLIES

AXIS®



A patented Benchmade exclusive, AXIS has been turning heads and winning fans ever since its introduction. A 100-percent ambidextrous design, AXIS gets its function from a small, hardened steel bar which rides forward and back in a slot machined into both steel liners. The bar extends to both sides of the knife, spanning the liners and positioned over the rear of the blade. It engages a ramped, tang portion

of the knife blade when it is opened. Two omega style springs, one on each liner, give the locking bar its inertia to engage the knife tang, and as a result the tang is wedged solidly between a sizable stop pin and the AXIS bar itself.

AUTOMATIC



These are folding knives, which open at the push of a button... The blade is deployed out from the handle side like traditional folding knives, but the blade is spring open assisted to a fully locked position. Benchmade is recognized for making some of the finest auto opening knives in the world. These are primarily manufactured for Law Enforcement, Military and Government Agency distribution. The Benchmade autos take full advantage of a powerful coil spring blade actuator coupled with our precisely machined taper lock mechanism, proving itself to be the most reliable system available in auto open knives. And our patented integrated safety mechanism (located on handle spine) ensures that the blade will not inadvertently deploy or close once it is locked open. Benchmade autos are precision engineered and manufactured to perform in the real world, you would be hard pressed to find a superior tool.

AUTO-AXIS is a combination of our AXIS lock and auto-open mechanisms to create a 100-percent ambidextrous automatic knife. Blade deployment is initiated by drawing the AXIS button back with either hand, even gloved.

MODIFIED LOCKING-LINER

The basic principle is an integral locking bar within the knife liner being stress bent, enabling it to spring into position behind the rear tang of the blade when the blade is opened. The locking bar wedges against the rear of the blade, locking it open until you physically push it clear and close the blade (locking-liners are made either right or left hand specific). And with a Benchmade modified locking-liner you get a patented feature which helps to enhance the lock function. The function success and function failure of a locking-liner depends greatly on how well it is made and also the quality of the materials used. With Benchmade, you get the best of both, and we offer it in a variety of knives.

LOCKING-LINER CONT.



LOCK-BACK CONT.



BILT® SYSTEM



A patented Benchmade exclusive, the BILT System (Bolted InLine Tang) simplifies the fixed blade handle assembly process, while at the same time strengthening the overall assembly itself. A long nut is positioned in the slotted full-tang; a hardened bolt is passed through the butt-cap and then threaded into the nut drawing the handle assembly together for a solid fit.

LOCK BACK

A basic functional lock that is relatively simple and low cost to manufacture. In practice the lock design positions a stop bar parallel to and in direct line with the blade at the upper back or rear tang of the blade to lock the blade open. Basically, as the blade is rotated open, the spring tensioned, center pivoted stop bar tracks around the circular portion of the blade tang until it drops or locks into the notched end tang. And to release the lock, the exposed portion of the stop bar in the handle back is depressed into the handle, pivoting the stop bar out, releasing the locked blade. This style of mechanism requires two hands to safely close the blade although you may still easily open the blade single-handed if desired.

NITROUS™



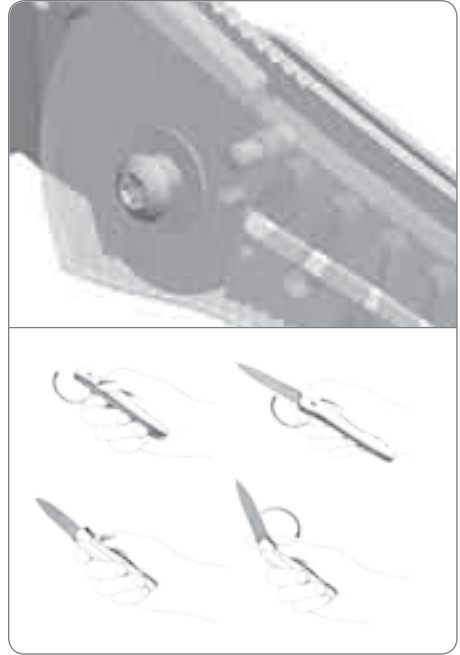
Another patented Benchmade exclusive, the Nitrous boosts the blade with ease. As the blade is closed the two torsion arms which run the length of the handle liners are secured in place and make contact with the blade tang. As tensioned against the blade tang, the user rotates the blade open to a 30-degree angle, the torsion arms take over and continue the blade opening process on its own. The huge advantages to the Nitrous design over other similar concepts, is that the blade must be rotated open to beyond a 30-degree angle, which offers added user control. The choice is yours.

OPTIMISER®



Another patented Benchmade exclusive, which “optimizes” the knife mechanism if the user chooses to do so... A steel torsion bar running the length of the inside handle spine is secured in place and contacts a surface area of the blade tang. As the blade is closed the torsion bar is tensioned against the blade tang, then as the user rotates the blade open to a 30-degree angle, the torsion bar takes over and continues the blade opening process on its own. The huge advantages to the Optimiser design over other similar concepts, is that the blade must be rotated open to beyond a 30-degree angle, which offers added user control. And even more amazing, the Optimiser can be added or removed at the discretion of the user and the knife/mechanism still functions normally. The choice is yours.

MONOLOCK



The monolock mechanism is basically a locking-liner on steroids. The knife liner is one in the same as the knife handle, and thus it is designed and made to function as the locking mechanism. Subsequently, a thicker material is used to provide enough surface area to be a functional handle, and in turn creates a larger surface area to lock the blade with. If executed properly, the monolock design rates very highly in strength and function.



ADVANCED MATERIALS

So what's it made of? Which blade steel is best? Just a couple of the questions we are asked when people see our knives, and the answers come down to this— Benchmade uses a variety of modern materials specially selected for their superior performance characteristics. We strongly believe that if you're going to put this much effort into designing a custom quality cutting tool, then it only makes sense to build it of the materials which compliment its form and enhance its function. And in some instances it's more than just selecting a certain material, it's what we do to it to bring out the extra edge which sets us apart from everyone else. Bottom line, we would much rather overbuild a knife than risk the alternative—we thought you would like that, too.

BLADE STEELS & FINISHES

154CM

An American made premium grade stainless steel originally developed for tough industrial applications. Known for its best all-around qualities, it offers great corrosion resistance with good toughness and edge quality.

S30V

An American made and developed premium grade stainless steel created especially for knives. It is a powder made steel with a uniform carbide distribution and clean steel properties. As a blade material it offers excellent corrosion resistance and superb edge qualities.

D2

An air-hardened tool steel, which offers good corrosion resistance and excellent mileage in wear resistance. A good choice for hard use applications.

440C

A high-chromium stainless steel with a terrific balance of good hardness and corrosion resistance. 440C takes a nice edge and is fairly easy to sharpen. An excellent value priced steel for its performance.

N690

An Austrian made stainless steel, which is comparable to 440C in performance and value. Keen edge qualities with great corrosion resistance.

X15 T.N

This French steel was developed for the aircraft industry for jet ball bearings, as well as the medical industry for scalpels. It has the ability to resist rust in the worst of conditions while maintaining ample edge retention. The capability behind this steel is in the way it is manufactured, resulting in the finest steel for use in harsh environments such as salt water. The edge on an X-15 T.N blade is easier to maintain.

STEEL	CARBON	CHROMIUM	COBALT	NITROGEN	MANGANESE	MOLYBDENUM	NICKEL	PHOSPHOROUS	SILICON	SULPHUR	TUNGSTEN	VANADIUM	HRC
154CM	1.05	14.00	-	-	0.50	4.00	-	-	0.30	-	-	-	58-60
A15-34	1.05	14.00	-	-	0.40	4.00	-	0.03	0.35	0.02	-	-	58-60
S30V	1.45	14.00	-	-	0.50	2.00	-	-	0.50	-	-	4.00	58-60
X15 T.N	0.40	16.00	-	-	-	2.00	-	<0.02	-	<0.005	-	0.35	58-60
M2	0.85	4.15	-	0.30	0.30	5.00	0.30	-	0.30	-	5.50-6.75	1.95	60-65
D2	1.50	12.00	-	0.30	0.60	1.00	0.30	-	0.60	-	-	1.00	57-61
440A	0.65	17.00	-	-	1.00	0.75	-	0.04	1.00	0.03	-	-	55-57
N690	1.07	17.00	1.50	-	0.40	1.10	-	-	0.40	-	-	0.10	58-60
440C	0.75	17.00	-	-	1.00	0.75	-	0.04	1.00	0.03	-	-	58-60
8CR1MOV	0.75	14.50	-	-	1.00	0.20	-	0.03	1.00	0.03	-	0.20	57-58
AUS-8	0.75	14.00	-	0.49	0.50	0.10	0.49	0.04	1.00	0.03	-	0.20	58-59
420HC	0.46	13.00	-	-	0.40	-	-	-	0.40	-	-	0.30	58-60
AUS-10	1.00	14.00	-	0.49	0.50	0.10	0.49	0.04	1.00	0.03	-	0.20	59-60
B6-42	1.15	14.50	-	-	0.50	4.00	-	-	0.30	-	-	1.20	61-63
CPM17440V	2.15	17.00	-	-	0.40	1.00	-	-	0.40	-	-	5.50	55-57
9CR13MOV	0.85	13.50	1.00	-	1.00	0.20	-	-	-	-	-	0.20	57-58

DAMASCUS

A specially forged, layered steel made up of a variety of steels. It offers remarkable toughness and edge quality. For finishing, the surface layers or lines are exposed through an acid etch, which creates a very unique visual effect. Used in special applications due to its inherent high cost and artistic nature.

BK1® COATING

BK1 coating. It is a matte black coating that provides excellent corrosion protection, which exceeds the ASTM-117 spec for saltwater while possessing higher scratch resistance.

BT2® COATING

A proprietary blade coating that is Xylan® based to provide excellent corrosion resistance which exceeds the ASTM-117 spec for saltwater and increases surface lubricity.

BP1 COATING

Black Pearl (BP) is a PVD (physical vapor deposition) coating made up of Titanium Carbo-Nitride (TiCN for short). It is a darker, near black, scratch resistant coating with nice decorative qualities.

COMBOEDGE®

It denotes our partial serration on the plain edge blade configuration. Benchmade's serration pattern offers ideal cutting ability for fibrous materials such as webbing, straps, netting or rope.

HEAT-TREATMENT

Over the years we have developed a "special recipe" for heat-treating our blade steels. This process maximizes the steels' molecular structure for a custom toughness and Benchmade superior performance. All steels may be created equally, but that is where it stops when it comes to Benchmade.

HANDLES

CARBON FIBER

A contemporary, premium composite of thin strands of carbon tightly woven into various weave patterns, then set in resin, which is most commonly clear but can be color tinted. It offers great looks and is exceptionally strong for its minimal weight.

MICARTA

Layers of linen cloths soaked in resin and pressured together. Most commonly used on more stylish knives due to its rich color finish qualities.

6061 T-6 ALUMINUM

A nonferrous metal originally developed as a premium aircraft grade aluminum, it offers a solid handle form and function at a nominal weight. Most typically color anodized.

KRATON®

A thermoplastic elastomer offering excellent flexibility and memory elasticity even under harsh conditions. It is over-molded onto the handle for added grip surface and tactile qualities.

NORYL GTX®

A modern engineered plastic offering high-strength, minimal flex and optimally lightweight properties. Molded to form.

G10

An extremely durable makeup of layers of fiberglass soaked in resin, then highly compressed and baked. Impervious to moisture or liquid and physically stable under climate change. Most commonly black, but is available in various colors, too.

ZYTEL®

A lightweight glass filled nylon engineered for strength and durability. Widely used throughout the auto industry in engine related components. Molded to form.

KYDEX®

A mixture of acrylic and PVC, which offers outstanding impact and chemical resistance as well as fire retardancy. Widely used in the auto and aerospace industry. Molded or thermo-formed.

DELRIN®

A lightweight and durable engineered polymer with low wear properties. Used throughout the auto industry. Molded to form.

VALOX®

A reinforced resin with excellent stiffness, strength and dimensional stability. Molded to form.

ANODIZATION

An electrochemical process used for adding color to titanium surfaces. A combination of chemical bath and electrical voltage level generates the desired color. A similar process is used for aluminum with the addition of a chemical coloring bath.

LINERS

6AL 4V-TITANIUM

Considered an exotic metal alloy (Titanium + 6% Aluminum + 4% Vanadium) with an excellent strength to weight ratio, which offers exceptional performance in a knife. Titanium is corrosion resistant to natural elements as well as many industrial chemicals.

420J STAINLESS STEEL

A common knife grade with low carbon, high chromium content steel which offers excellent bend toughness and wear ability. It offers excellent corrosion resistant characteristics as well. Also used in handles.

SHEATHS

BALLISTICS NYLON

A heavy duty woven nylon fabric originally developed for use in bullet proof vests and body armor. Offers great lightweight sheath durability.

SANTOPRENE®

A thermoplastic elastomer which is molded to specification. It offers excellent flexibility with high tear strength and fatigue resistance. Resistance to many harsh chemicals. These features contribute to improved performance in a range of tough jobs.

LEATHER

A natural material dating back to man's earliest beginnings in the knife world. It can be easily dyed and tooled for desired visual effect. Offers traditionally accepted levels of performance and design.

The following are registered trademarks of their respective companies: Delrin®, E.I. du Pont de Nemours & Company; Zytel®, E.I. du Pont de Nemours & Company; Kydex®, Kleelex Company; Noryl GTX®, General Electric Company; Valox®, General Electric Company; Xylan®, Whitford Worldwide Corporation; Kraton®, Kraton Polymers Company; Santopreme®, Advanced Elastomer Systems

MODEL FEATURE CODES

These codes appear after the Benchmade model specific numbers. They identify particular feature variations within each model. (Example: Model 140SBK is a Model 140 knife which features partially serrated ComboEdge and BK1 black corrosion resistant coating on the blade).

(NO CODE)	Plain edge/no blade coating	-TK	Tether Kydex® friction-fit sheath
S	ComboEdge™ (partially serrated)/no blade coating	W	Soft sheath for rescue hook
BK	Plain edge/BK1® black corrosion resistant coated blade	ADC	Army Digital Camouflage color sheath
SBK	ComboEdge (partially serrated)/ BK1® black corrosion resistant coated blade	T	Trainer blade with red handle
B	Black anti-reflective, corrosion resistant coated blade (Red Class)	TR	Bali-song trainer with red handle
SB	ComboEdge (partially serrated)/ black anti-reflective coated blade (Red Class)	D2	D2 Blade Steel
OD	Olive Drab color handle	H20	X15 T.N steel, 100% corrosion resistant
SL	Skyline Camouflage™ patterned handle	DM	Damascus Blade
SN	Sand Camouflage color handle	CP	Clam pack
CF	Carbon Fiber Handle		
-RED	Red color handle		
SLV	Silver color handle		
-BLU	Blue color handle		
-YEL	Yellow color handle		
-BLK	Black color handle		
P	Mother-of-Pearl		
A	Abalone		
BT	BT2® black corrosion resistant coated blade		
BP	BP1 Charcol color, scratch resistant coating		

Occasionally we may do a limited edition of a model where the model number does not change but does get an addition to the ending, such as -01 or -02 (example: Gold Class 705-01 and 705-02).

Every effort is made to ensure the accuracy of the prices and information presented in this catalog. However, we reserve the right to rectify any and all errors prior to any sale transactions. This catalog is produced annually. Check website for the latest information.

Prices shown are at suggested retail (U.S. currency). Actual purchase prices may vary. All Pricing and product specifications are subject to possible change without prior notice.

EXTRAS/ACCESSORIES

There's more to Benchmade than just great knives. We also offer you the service and support to back up or enhance the performance of our knives. From the finest customer service in the industry to branded clothing and specialty items—it's all available for you to take advantage of. And if you find that something is missing or needs improvement, we want to hear about it.

ACCESSORIES

BLUE BOX



Benchmade uses “six-lobe” headed screws exclusively throughout the assembly of our knives. Occasionally you may want to adjust blade tension, remove the carry-clip or simply check for any loosened screws, so we offer this handy kit for those purposes. Kit includes various bit sizes, and bit holder/extension all self-contained in a molded plastic case which doubles as the handle. Made in Taiwan.

981084 Blue Box \$12

BLUELUBE™ & BLUELUBE CLEANER



Introducing a newly formulated technology to help keep those knives tuned for smooth function. Start off with BLUELUBE Cleaner to flush and prep the moving parts for a fresh application of BLUELUBE. BLUELUBE not only lubricates, it prevents rust and corrosion, too. Both formulas work in tandem to enhance overall knife function and keep things moving like a well-oiled machine (without the build up). Made in USA.

983901 BLUELUBE Cleaner (4oz bottle) \$7.95

983900 BLUELUBE (1.25oz bottle w/ nozzle) \$6.50

REDI-EDGE® KNIFE SHARPENERS



For a quick and easy to use field edge when you're out in the middle of nowhere. Both models use micro carbon carbide sharpening blades placed at a 60° included angle, which you draw the knife edge/blade through to put an effective field edge on.

(A.) The Tactical Pro is the larger of the two at 3.00” in length, yet stows easily for go everywhere carry. This model also features a ceramic honing surface on one facing to provide for a quick means to smooth the edge.

983902 REDI-EDGE Tactical Pro Sharpener \$24.95

(B.) The Mini-Tactical Pro is a pocket carry at 2.00” in length. You still get the same great field sharpener performance. Does not include the honing surface.

983903 REDI-EDGE Mini Tactical Pro Sharpener \$19.95

SHEATHS & SHEATH ACCESSORIES MOLLE FOLDER POUCH SHEATH (MOLLE® Compatible)



These snap-over hood closure pouches secure the knife well and can be used for belt carry with the Malice® clip (included), and are Molle system enabled, too. Heavy stitch and elasticized fit offer a true fit. Available in 3 color options. Made in USA.

PART NUMBERS & PRICING

A. 983466F Black MOLLE Folder Pouch \$20

B. 983467F Coyote MOLLE Folder Pouch \$20

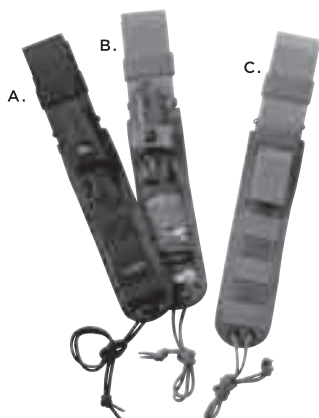
C. 983853F Foliage Green MOLLE Folder Pouch \$20

FIXED SHEATH (MOLLE® Compatible)

The new 140/141 fixed soft sheaths are designed to secure the knife in either right or left side carry. Sheaths come standard with Malice clip and Velcro® adjustable belt hanger for belt carry. Heavy stitch and hard liners stow the knife securely and a snap-around closure snugs the handle. Available in 3 color options. Made in USA.

PART NUMBERS & PRICING

- A. 983468F Black MOLLE Fixed Soft Sheath \$50
- B. 983469F Coyote MOLLE Fixed Soft Sheath \$50
- C. 983854F Foliage Green MOLLE Fixed Soft Sheath \$50

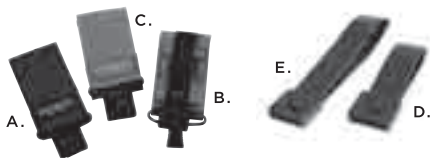


155/156 FIXED SHEATH KIT (Pictured on Page 16 w/155) Made in USA.

PART NUMBERS & PRICING

- A. 984143F Black MOLLE Folder Pouch \$60
- B. 984145F Coyote MOLLE Folder Pouch \$60
- C. 984144F Foliage Green MOLLE Folder Pouch \$60

5 HOOK POUCH (MOLLE® Compatible)



(A,B,C.) These Velcro® hood closure pouches secure the 5 Rescue Hook for belt carry, and are Molle system enabled with the Malice® clip (sold separately). Available in 3 colors. Made in USA.

PART NUMBERS & PRICING

- A. 981494F Black MOLLE 5 Hook Pouch \$8
- B. 983855F Coyote MOLLE 5 Hook Pouch \$8
- C. 983856F Foliage Green MOLLE 5 Hook Pouch \$8

7 HOOK POUCH (MOLLE® Compatible)



PART NUMBERS & PRICING

- A. 984166F Black MOLLE 7 Hook Pouch \$10
- B. 984204F Coyote MOLLE 7 Hook Pouch \$10
- C. 984205F Foliage Green MOLLE 7 Hook Pouch \$10

MALICE CLIPS (pictured w/5 hook pouch)

(D,E.) Injection molded connecting-clip to attach sheaths to Molle systems, or to use as a belt loop style carry. Clips secure closed with a snap-lock.

PART NUMBERS & PRICING

- D. 983550F Small Malice Clip (3" size) \$1.50
- E. 983551F Large Malice Clip (4.75" size) \$2

FOLDER POUCH/SOFT SHEATHS



(A.) This sheath features a snap-buckle closure flap to change things up a bit. It can be worn as a belt carry, or lashed to a shoulder strap with the Velcro lash straps affixed to the sheath. Made in China.

PART NUMBERS & PRICING

- A. 983170F Folder Pouch, black \$15

(B.) For those individuals who prefer to carry their knives in a sheath, we offer a simple but effective design, which is available in several sizes. There are two different sizes (small 1.625" W x 5.00" D; large 2.00" W x 5.25" D) for folders, and additionally we offer one with a smaller second pocket to accommodate a Rescue Hook or small knife. We also offer a 4-inch Bali-Song sheath (not pictured). All soft sheaths are made of 1680 denier poly-ballistic nylon with liners and they are edged with nylon for a clean, no-snag finish. They feature Velcro® closures. Made in USA.

B. PART NUMBERS AND PRICING

- 981086F Soft Sheath, small size (1.625" W x 5.00" D), black \$10
- 981087F Soft Sheath, large size (2.00" W x 5.25" D), black \$10
- 981787F Soft Sheath, dual carry/pocket (2.00" W x 5.00" D), black \$12
- 981717F Soft Sheath, Bali-Song Model 40 Series, black \$10

SHEATH ACCESORIES



We offer several carry accessories so you can modify your Benchmade sheaths to better suit your particular

carry needs. These include: **A** Metal-clip w/lash tab; **B** Molded belt loop with bridge/hardware; **C** Tek-Lok® and **D** Perma-Clips®; and **E** Carry-Strap w/lash tab. (NOTE: Some items offer limited to model specific applications). Individual lash tabs (not pictured).

PART NUMBERS AND PRICING

- A. 981607F** Metal-Clip w/lash tab (fits Model 5, 100, 140, 141, 145, 160, 175, 10510) \$10
- B. 981608F** Molded Belt-Loop w/bridge (Model 100, 140, 141, 145) \$10
- C. 981609F** Tek-Lok®, large size \$15
- D. 981610F** Perma-Clips® for large Tek-Lok (set of 2) \$4
- E. 981611F** Carry-Strap w/4-way lash-tab (metal-clip clips into this) \$10
- F. 981612F** (not pictured) Lash-Tab (can be sewn onto clothing or gear) \$5

140/141 HANDLE REPLACEMENT KIT



PART NUMBERS & PRICING

- 140/141 BLK** Black Handle Kit \$120
- 140/141 FG** Foliage Green Handle Kit \$120

SAFARILAND® HOLSTER SHEATH ATTACHMENT KIT



PART NUMBERS & PRICING

- 984135F** Safariland Sheath Attachment Kit \$12

POLO SHIRTS



Dress 'em up or dress 'em down, either way, Benchmade polos will say it proud. All polos feature the Benchmade logo embroidered on left front chest. Shirts are a medium weight 100-percent cotton fabric with 3-button welt collar and sleeve cuffs.

COLORED POLOS

Available in Royal Blue, Black or Red in sizes sml, med, lrg, Xlrg, 2Xlrg (specify shirt color/size when ordering). All color shirts feature silver color thread embroidered logo. \$40

WHITE POLOS

All white shirt in sizes sml, med, lrg, Xlrg, 2Xlrg (specify logo color/size when ordering). All color shirts feature silver color thread embroidered logo with choice of blue, black or red color butterfly in logo. \$35

JACKETS & VESTS

BLACK/GRAY SPORT JACKET



Benchmade Cool! Designer styled urban look in a lightweight jacket. A nylon/cotton oxford shell with nylon mesh and taffeta lining to finish it out. Zippered front up and down, adjustable cuffs, zippered sleeve pocket and other functional features. Available in sizes sml, med, lrg, Xlrg, 2Xlrg (specify size when ordering) \$80

HOODED BLUE TEAM JACKET



Royal blue water repellent nylon shell with gray fleece lined hood and body. Zippered front, draw-cord bottom, elastic cuffs and draw-string hood. Available in sizes sml, med, lrg, Xlrg, 2Xlrg (specify size when ordering) \$65

REVERSIBLE COLOR VESTS



Wear 'em inside, wear 'em outside, or wear 'em inside out—they're reversible. The colored nylon side is water repellent and the black fleece side is just plain soft. Zippered front, zippered pockets and elastic waistband. Benchmade logo is embroidered in black color thread on color side only. Available in yellow, blue, red and titanium gray. Available in sizes sml, med, lrg, Xlrg, 2Xlrg (specify color/size when ordering) \$60

SAFARILAND® is a registered trademark of Armor Holdings, Inc.

SWEATSHIRTS

GRAYFLY HOODY



Nothing like a great looking sweatshirt to jump into on a weekend. This heavyweight pullover sweatshirt is athletic gray with dark gray screen-printed artwork on hood and left sleeve. Drawstring hood, knit cuffs and waistband with front hand warmer pouch. Available in sml, med, lrg, Xlrg, 2Xlrg (specify size when ordering). \$40

BLACK SWEATSHIRT (pictured above)

Get one of these to wear on those “cool” days. Benchmade logo is embroidered in black color on left chest. Sweatshirts are black with royal blue trim a knit collar, cuffs and waistband. Available in med, lrg, Xlrg, 2Xlrg (specify size when ordering). \$40

HATS & HEADGEAR

FLEXFIT® HAT



What better way to trap all of that brain matter in that with one of these high class hats? Black in color with silver embroidered logo on facing and American flag embroidered on front left panel. Available in sml-med size and lrg-Xlrg size (specify size when ordering). \$20

BLUEHAT (pictured above)

All blue all the time. Full, formed hat with Velcro® adjust to size features silver logo embroidered on facing and American flag embroidered on left front panel. One size fits all. \$18

LOGOBEANIE (pictured above)

Cover the cranium with Benchmade pride. A dark gray with black trim stretch cap comes with logo embroidered along bottom edge. No more bad hair day excuses— it’s Benchmade. One size fits all. \$12

AND THERE’S MORE...

IF YOU LIKE WHAT YOU SEE HERE, CHECK OUT THE FULL LINE OF SPECIALTY GEAR ONLINE AT—

www.BENCHMADE.com

SPECIAL SERVICES



LIFESHARP® SERVICE

There’s never a dull moment with a Benchmade... That’s right! We will gladly sharpen your Benchmade knife to a factory razor sharp edge (service does not apply to any serrated portion of the blade). If you prefer us to sharpen your blade, or if you may have neglected to maintain your edge for a while, simply ship your knife to us. We’ll not only sharpen it, we will also inspect the knife for any warranted repairs and “tune” the knife for optimum performance. Simply ship the knife to the Benchmade address, postage paid and insured. Please enclose your return shipping address with \$5.00 to cover return shipping charges.

PERSONALIZED LASER MARKING

Put your name on it. Make it yours. Commemorate an event or outfit the club. Whatever the circumstance, now you can have your logo or artwork laser etched onto any of the Benchmade knives. Depending on the particular model, the mark can be placed either on the blades, or in some models, on the handles. If you are interested in this special service, simply call a Benchmade customer service representative at 800.800.7427. Basic set-up charges and quantity restrictions do apply.

THE ULTIMATE SOURCE

BENCHMADE.COM

Stay connected with everything Benchmade. From views of every Benchmade model configuration to creating a list of your personal favorites for future reference and improve your Benchmade cyberspace experience. For the new Benchmade visitor there’s expanded product and technical information to make your “initiation” process easier. And for you Benchmade addicts, you can get your fix of the latest model introductions as well as share your knife knowledge and Benchmade experiences with the rest of the world. The web site also has a handy dealer locator so you can find your nearest source for cutting edge innovation close to home. Or, if you prefer, you can buy direct from the factory and have it shipped right to your door. So your inside track on everything Benchmade is only a click away at benchmade.com.

THE WARRANTY

LIMITED LIFETIME WARRANTY

Benchmade Knife Company, Inc. ("Benchmade") warrants to the original owner that this knife will be free from defects in materials and workmanship. Benchmade will, without charge, repair or replace, at Benchmade's option, any knife returned for Warranty work and found to be defective by Benchmade. The knife must be shipped by owner prepaid and insured freight, together with a description of the problem, and must be accompanied by the original bill of sale, your charge or credit card receipt or any satisfactory proof of the original date of purchase from a retail dealer. Any automatic knife returned for Warranty service from outside of Oregon must also include a copy of the owner's active police or military identification, or be returned through the authorized Benchmade dealer from whom the knife was originally purchased.

NO EXCEPTIONS WILL BE MADE.

WHAT IS COVERED

This Warranty covers replacement parts and labor

WHAT IS NOT COVERED

This Warranty does not cover normal wear, resharpener of the blade, damage caused by neglect, misuse or the failure to perform normal or necessary maintenance, disassembly of any knife by any person other than Benchmade's Warranty department, or shipping costs for returned knives.

Do not use your new knife as a screwdriver, prybar, chisel or punch. Do not throw your knife or use it for any purpose other than cutting. Do not disassemble your knife. Do not sharpen your knife on a power grinding wheel. Any of these acts will void your Warranty. **MINIMUM CHARGE TO REASSEMBLE A KNIFE WHEN THE WARRANTY HAS BEEN VOIDED IS \$20 PLUS PARTS.**

Repair or replacement as provided under this Warranty is the exclusive remedy of the consumer. Benchmade shall not be liable for any incidental, reliance, or consequential damages or breach of implied Warranty on this product, including any damage to person or property. Benchmade's liability under any circumstances is limited to the purchase price. Some states do not allow exclusion or limitation of incidental or consequential damages, so the above limitations or exclusions may not apply to you. This Warranty gives you specific legal rights, and you may also have other rights which vary from state to state.

This knife has only one use, as a cutting tool. Benchmade's knives carry no warranty except as expressly contained herein. Benchmade disclaims all warranties of merchantability and fitness for a particular purpose other than for use as a cutting tool. There are no warranties which extend beyond the description contained herein.

Please review the Warranty information and proper knife care instructions provided with each knife.

ORDERING OF AUTOMATIC KNIVES

Automatic knives are available for sale in Oregon state. All orders for automatic knives must be on departmental purchase order or letterhead with wording to the effect that the knives will be used as duty items. All orders for automatic knives must be faxed or mailed. We cannot accept phone orders for automatic knives. The sales of automatic knives is Federally regulated (refer to catalog inside cover for Federal Statutes), always check permissibility within your state or locality as non-Federal personnel may be precluded from ownership or use by State laws. **NO EXCEPTIONS WILL BE MADE.**

The purchase, use and ownership of knives is subject to a wide variety of local laws and regulations. It is impossible for Benchmade Knife Company to know or interpret all of these laws. It is the responsibility of the buyer to be aware of the laws which govern them in their specific area wherever that may be. We encourage the responsible ownership and use of knives as one of mankind's oldest tools. Be smart and be safe.

SHIPPING OF AUTOMATIC KNIVES

All AUTOMATIC knives shipped by Benchmade will be done via the following couriers, UPS, FedEx, etc. and CANNOT be shipped through the U.S. Postal Service. Also please note that all returns of automatic knives must be shipped via alternate couriers, UPS, FedEx, etc. This in accordance with the policies of the U.S. Postal Service. Thank you.

ARE BENCHMADE ASSIST OPEN KNIVES LEGAL?

The way that the Benchmade assist opener knives are designed and built, they are not considered an automatic or switchblade under Federal interpretations. The Optimiser® and new Nitrous™ assist mechanisms must be initiated with the user manually overcoming the pull of the torsion bar or, split liner systems to activate the assist function. This is done through the use manually or, physically having to engage the blade first before opening. And, as an added safety feature, the Benchmade assist openers must have their blades rotated open to an approximately 20 to 30-degree open angle BEFORE the assist engages. This eliminates the need and complication of a secondary safety mechanism.

Even though the Benchmade assist opener models are not classified as automatics or switchblades, it is still recommended that the user research and verify the legalities in their own specific areas. Knife laws and regulations are subject to local interpretations and may change frequently.

You may also contact the American Knife and Tool Institute (AKTI) for assistance or, you can choose to become a member and help to protect your knife freedoms. www.akti.org

The following are trademarks of Benchmade Knife Company, Inc., Oregon City, Oregon USA: Brag Bag; Blue Lube; Blue Morpho; Instigator; Rukus; Skirmish. • The following are registered trademarks of Benchmade Knife Company, Inc., Oregon City, Oregon USA: Benchmade; Activator; Ambush; Apparition; Ares; AXIS; Bali-Song (butterfly logo); BenchKote (BK); Benchmite; BILT (Bolted In-Line Tang); BK1; BT2; ComboEdge; Gamer; Gravitator; Griptilian; InDraft; Juju; LEVITATOR; LifeSharp; MonoChrome; Nimravus; Offsider; Opportunist; Optimiser; Outbouncer; Pika; Presidio; Prestigedged; Rant; Reflex; Resistor; Sequel; Snipe; Stryker; Switchback. • NOTE: We reserve the right to make any design and/or material modifications without prior notice. • Benchmade products are manufactured under one or more of the following patents: Safety Lock for Automatic Folding Knife - U.S. Patent No. 5,822,866; Blade Lock Mechanism for Folding Knife (Modified Locking Liner) - U.S. Patent No. 5,755,035; Pocket Knife With Lock (AXIS Lock) - U.S. Patent No. 5,737,841; Folding Knife (Design, Stryker Model) - U.S. Patent No. D408,706; Knife Blade (Design, Stryker Model) - U.S. Patent No. D409,070; Folding Knife With Grooved Handle (Design, Model 350, 3550) - U.S. Patent No. D397,017; Grooved Knife Handle (Design, 350, 3550) - U.S. Patent No. D397,020; Folding Knife (Design, Ascent Model) - U.S. Patent No. D385,173; Knife Design (Design, Ascent Model) - U.S. Patent No. D384,871; Portion Of A Blade For A Knife (Design, Pardue Model 720 Knife) - U.S. Patent No. D426,132; Knife Blade (Design Model 140/145) - U.S. Patent No. D425,389; Knife Handle (Design, Model 705) - U.S. Patent No. D428,789. Other Patents Pending.

EDGEDWEAPONSTRAINING

CUTTING EDGE TRAINING

Cutting Edge Training, LLC, is the premier police training company in the US. The “Tactical Duty Knife” courses were carefully designed to train the police officer, deputy, and agent how to reasonably and effectively employ the knife in those last-ditch situations where survival is doubtful and often sadly results in a police funeral. In addition, Cutting Edge Training takes Tactical Duty Knife a step further, by training officers in the latest risk-management strategies of articulating the objective reasonableness of the officer’s force response. This dual approach—ultimate practicality with cutting edge risk management practices combined with the political sensitivity to the police use of the knife—makes Cutting Edge Training’s knife training the premier police training course in the world.

Above all else, Benchmade realizes that the knives we build must not only be the finest products of their kind in the world, but when used by police officers, must be used in a manner that is legally justified as well as effective. Our knives, when used for defense purposes, are life-saving tools, and Cutting Edge Training’s program employs the most effective method of teaching officers how to employ the knife effectively in an incredibly short period of time. At the same time, and as importantly, the unique way the officer is trained to employ the knife, developed by Cutting Edge Training, demonstrates to the court, jury, and prosecutor the reasonableness of the force response. The liability awareness and reduction aspects of this training are nothing less than outstanding, and should be a required component of any force response course.

As Cutting Edge Training emphasizes throughout its training, this is not a “slash and gash” or a “ripper” class. They don’t teach “knife-fighting” to cops, because officers don’t fight with knives. These Tactical Duty Knife courses completely avoid a “military” or “martial arts” orientation to police knife employment.

“I WANT TO LET YOU KNOW THAT I LEARNED A LOT MORE THAN JUST HOW TO USE A TACTICAL FOLDING KNIFE IN OUR COURSE. I THINK THE SIMPLICITY AND EASILY DEFENDABLE SYSTEM THAT YOU CREATED WILL HELP SAVE OFFICERS’ LIVES, BOTH DURING AND EVEN AFTER A USE OF FORCE INCIDENT.”

*KIP TEITSORT, MISSOURI SHERIFF’S ASSOCIATION TRAINING ACADEMY,
TACTICAL DUTY KNIFE INSTRUCTOR: TRAIN-THE-TRAINER.*

If you are interested in obtaining the finest training possible in the rational use and defense against edged weapons for law enforcement and military, contact Benchmade Customer Service at 800.800.7427, or call George Williams with Cutting Edge Training directly at 360.671.2007 (email: training@cuttingedgetraining.org).

TRAINER HANDLES ARE –
RED IN COLOR FOR POSITIVE
IDENTIFICATION



MODEL 5000T

FOR SPECIFIC PRODUCT INFORMATION
SEE PAGES: 04, 09, 14, 22, 23



HK
KNIVES

Benchmade offers a line of high-speed tactical cutlery under the Heckler & Koch® brand. These knives feature exclusive designs, Benchmade quality and the *no compromise* attitudes of the renowned HK firearms.

For information go to hk-knives.com or, check your local authorized Benchmade dealer.

HK is a registered trademark of Heckler & Koch Inc.



BENCHMADE KNIFE COMPANY, INC
300 BEAVERCREEK ROAD
OREGON CITY, OREGON 97045 USA

TELEPHONE
800.800.7427 503.655.6004

FAX
503.655.6223 503.655.7922

EMAIL
INFO@BENCHMADE.COM

WEB
BENCHMADE.COM

BENCHMADE[®]
300 BEAVERCREEK ROAD
OREGON CITY, OR 97045

PRSRST STD
US POSTAGE
PAID
OREGON CITY, OR
PERMIT NO. 25

All trademarks and copyrights are the property of
Benchmade Knife Company, Inc.
Notice, one or more patents may apply.
©2007 BENCHMADE KNIFE CO., INC. • Printed in USA