

HELD TO A HIGHER STANDARD



BENCHMADE®

KNIFE COMPANY

THE OFFICIAL BENCHMADE 2001 CATALOG



**There's A Very Good Reason Why
We OVERBUILD Our Knives...**

YOU.

(Afterall, You're Only Human.)

It's human nature to want more. And having tools that have the capacity to offer you more only makes sense. By creating the most advanced design innovations, utilizing the latest modern materials and putting it all together with a higher standard of manufactured quality, Benchmade affords you more in a knife. Overbuilt? Hell yes! (You're welcome).



www.benchmade.com



WE DEDICATE THIS CATALOG TO THE BRAND.
WE DON'T OWN THE BRAND. WE DON'T DEFINE WHAT IT STANDS FOR.
OUR CUSTOMERS DO.

BENCHMADE

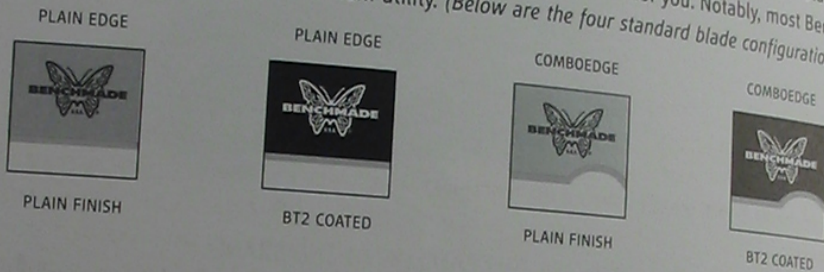
IT'S A COMMITMENT TO DELIVER A HIGHER STANDARD.
AND THERE'S GOOD REASON FOR ALL THE EFFORT WE PUT INTO THE BRAND...
TO EXCEED YOUR EXPECTATIONS.

TABLE OF CONTENTS

BENCHMADE DISTINCTION	...page 2
EXCLUSIVE AXIS LOCK	...page 3
CUSTOM DESIGNERS	...page 4
SUPERIOR CUTTING TOOLS	...pages 5-20
BENCHMADE DIFFERENCE	...page 21
SPECIAL INGREDIENTS	...pages 21-22
ACCESSORIES	...page 23
SPECIALTY/CLOTHING	...pages 24-25
WARRANTY & PRICE LIST	...pages 25-27

FORM & FUNCTION

A higher standard in single-handed functioning. Benchmade Knife Company engineers and manufactures a variety of folders featuring several unique locking mechanisms, including our own exclusive patented AXIS™ lock (see page 10) which is totally ambidextrous, patented modified locking-liners, lock-backs, Mono-Lock™ and automatic openers. Or, if you're in need of a well-designed fixed blade, we offer several great options there as well. ○ Blade shapes are model specific, and Benchmade offers a multitude of blade configurations in each model. These include: plain edge; ComboEdge® (with partial serrations), and fully-serrated edge (limited models only). Additionally, blades are available in several finishes including: satin; BT2® coated for corrosion resistance; or **NEW!** this year, Boron Carbide (BN1) on several models (see particular model specifications for edge and finish availability). And in several models you can even choose between two different blade steels. ○ When selecting a knife, consider the tasks you wish to perform and the circumstances you could potentially face, then determine which style offers the most benefit for you. Notably, most Benchmade knives are purposely designed for maximum utility. (Below are the four standard blade configurations).



FEATURES



As mentioned above, Benchmade manufactures a modified locking-liner with our patented concave radius, machined on the rear tang of the blade. This feature helps to ensure the locking-liner fully engages for optimum safety. It's used exclusively on all of our locking-liner designs. ○ Another added feature with Benchmade is the adjustable blade-pivot screw. You can readily tension the blade drag to your personal preference and the pivot screws are larger than average for increased strength. All Benchmade blades operate exceptionally smooth with little or no side-to-side "wobble." Knife blades are very sharp right out of the box too.

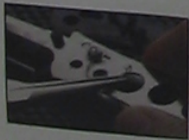


○ Stainless steel carry-clips are anchored (removable) to knife handles with six-lobe (Torx® style) screws for secure carry versatility and ease of access. ○ That same engineered screw style is used throughout the knives for a superior means of achieving a "tighter" fit through a more controllable tooling system. And to take it one step further, we use stainless steel screw-receiver inserts wherever warranted. These threaded inserts help to prevent any stripping of screws while at the same time providing a solid anchoring point for component assembly.

Torx® is a registered trademark of Camcar Textron, Inc.

DISTINCTION

Overbuilt? Maybe. But at Benchmade we do things our own way. We are involved in the design and manufacturing of each component in every knife we make from start to finish. Benchmade has close associations with several of the world's premiere custom knife makers who provide some of the latest innovations and functional designs. ○ A dedicated work force utilizes the newest technologies available including laser cutting to tolerances of .0005-inches which amounts to slicing a human hair into 16 pieces. From there, the CNC machining centers and a host of other advanced production equipment helps to shape each piece into a "Benchmade fit" cutting tool. Our components are precisely manufactured to assemble with tight tolerances without requiring any additional fit and finish work to mask any inaccuracies. ○ It all comes together in a fit, form and function—unparalleled, even by some custom knife makers' standards. (See pages 21-22 for additional Benchmade features, materials and manufacturing).



SLOTTED LI
FOR POSIT
TRACKING
LOCK-BAR

A Benchmade e
ed by some as
ing" by renown
features of the
is definitely mo
inherent AXIS a
with either ha
"smoothness"
parts to the AX
so you can eas
loaded bar whi
of the knife; sp
a ramped notch
one on each lin
solidly between
plicity, but the

If you have it—
rest of the world
It's founded on
to the knife ind
given talents int
vations and fres
selection of wor
modern material
transpires into s
works too, becau
of mankind's old

TECHNICALLY
ADVANCED
CUTLERY

get in a knife—st
ence of the TAC s

I N N O V A T I O N

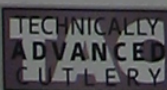


ILLUSTRATIONS OF MODEL 710 WITH SCALES REMOVED EXPOSING THE AXIS MECHANISM.

A Benchmade exclusive, the patented AXIS locking mechanism is an ingenious marvel that has been touted by some as quite possibly "the strongest folding lock EVER." It's the culmination of four years of "tinkering" by renowned custom knife makers Bill McHenry and Jason Williams. Simple yet functional, three key features of the AXIS lock greatly enhance the function of knives. First and foremost is the strength. This lock is definitely more than adequate for the demands of normal knife use. ● Arguably, second to strength is the inherent AXIS advantage of being totally ambidextrous. The blade can be readily actuated open or closed with either hand— without ever having to place flesh in the blade path. ● Third, is the indescribable "smoothness" with which the mechanism and blade function. By design there are no traditional "friction" parts to the AXIS mechanism, making the function all that much smoother. And it's all reasonably exposed so you can easily clean away any unwarranted debris. ● Basically, AXIS gets its function from a spring-loaded bar which rides forward and back in a slot machined into both liners. The bar extends to both sides of the knife; spanning the space between the liners and is positioned over the rear of the blade. It engages a ramped notch cut into the tang portion of the knife blade when it is opened. Two omega style springs, one on each liner, give the locking bar its inertia to engage the knife tang, and as a result the tang is wedged solidly between a sizable stop pin and the AXIS bar itself. ● It's a lot of words in an attempt to describe simplicity, but the very best way to truly appreciate the AXIS lock is to experience it for yourself, firsthand.

P A S S I O N

If you have it— it shows. At Benchmade, we shape it, we build it and then we put it into blue boxes for the rest of the world to share. And to make certain it never dies, we established the Benchmade Designer Team. It's founded on the premise of a high regard for the individual custom knife maker and what they represent to the knife industry. These skilled artisans and craftsmen pour their genuine passions and employ their given talents into making unique realities one piece at a time. They are continually developing new innovations and fresh designs which improve the form and function of knives. ● By working closely with a selection of world-class custom designers, Benchmade is able to tap into the newest locking mechanisms, modern materials, and the latest designs. Ultimately, a collaboration between designer and manufacturer transpires into something special that previously may have only been enjoyed by a fortunate few. And it works too, because we all possess that same undying passion for superior form and function in making one of mankind's oldest tools— and it shows.



NEW! this year we have instituted a special designation of ultimate form and function within the Benchmade line. It's titled TAC™ which stands for "Technically Advanced Cutlery". These select knives clearly represent the best of the best. Superior design innovation, premium building materials and the highest standard of quality you can get in a knife— short of maybe some custom work. So, as you turn the pages in this catalog, note the presence of the TAC symbol for the ultimate form and function.

THE DESIGNERS

The Benchmade Designer Team. If you follow custom knife making in the slightest, you know this is a line-up of who's who in the world of custom knife making. And, if you're new to custom designs—you're definitely in for a real treat.

PARDUE

Mel Pardue is one of those rare individuals who gets paid for doing what he enjoys most. Mel's association with Benchmade brings his 20-plus years custom knife making experiences and a personal knife design style that has a class and simplicity all its own. Some of his current Benchmade collaborations offer great utility to the everyday knife user while at the same time presenting an upscale distinction. Less is definitely more when it comes to Mel's designs.

ELISHEWITZ

Allen Elishewitz is a self-taught knife maker who has literally taken the custom knife world by storm with his flair for visual design and the desire to make knives that produce maximum results with minimum effort. Several of Allen's Benchmade collaborations are approved issue items for Military and Law Enforcement personnel which attests to their great functionality. In addition, he has several very "sporty" collaborations with a look that makes them stand out in a crowd.

McHENRY & WILLIAMS

It runs in the family... Bill McHenry and Stephen Jason Williams spend their days making exquisite pieces of "art with an edge on it". Bill's fine art and metal smithing heritage combine well with Jason's mechanical background, and together they have been responsible for introducing several notable innovations into the knife making world. Benchmade was fortunate to be involved with one such innovation, the revolutionary AXIS™ locking mechanism. It represents four years of their persistent "tinkering" until they were satisfied it was right. Some have proclaimed it to be "the strongest folding lock mechanism EVER."

OSBORNE

Warren Osborne got into knife making by circumstance... Being raised in the farming and ranching industry taught him early on what great utility a quality knife can offer. How a knife feels in the hand over extended use, blade design and materials as well as the quality with which it is made are all mandatory parts to an Osborne design. And it doesn't hurt to have a little passion for what you're doing either.

TERZUOLA

Robert Terzuola views knives as perhaps the single most used and universal item yet devised by our species. He has been working with his hands all his life and takes great honor in continuing the tradition of building one of man's oldest tools. Bob has fashioned a name for himself in the custom knife world by creating pure knife designs which truly possess the simple grace of form.

And it certainly doesn't stop here! Benchmade is committed to working with the hottest custom designers, and delivering the latest designs and innovations. We'll continue driving the manufactured knife market to still higher standards for the future! It's what we do.

ELISHEWITZ

MODEL 690



MODEL 690

MODEL 690 FOLDER

OUCH!... The Model 690 is one very sharp knife—on both ends. What a way to start out the catalog! This **NEW!** Allen Elishewitz design pulls out all the stops in knife making like only Benchmade can. Ⓞ Black carbon fiber and rose color stabilized wood are delicately fashioned into a multi-contoured specimen of hand tantalizing grip. Add to that, sapphire-blue anodized double titanium liners with patented modified locking-liner. Bolt on a two-toned custom finish blade shaped for maximum utility, and pour in some of that world famous home grown Benchmade sweat and ingenuity for the ultimate in knife sharpness through and through. Blades are also available with BC1™ (Boron Carbide) coating for a nice visual effect and corrosion resistance. Ⓞ Convenient carry is offered with use of the Elishewitz tear-drop signature carry-clip, or it can easily be removed if desired. The Model 690 clearly typifies our unique ability to offer you a higher standard of cutting tool. Not to mention way cool, too.

MODEL 690 ELISHEWITZ—BLADE MATERIAL: 154CM STAINLESS STEEL, HARDENED TO 59-61HRC; LENGTH: 3.25" (8.26cm); THICKNESS: .113" (2.88mm); OPEN: 7.50" (19.05cm); CLOSED: 4.12" (10.50cm); WEIGHT: 3.00oz (85gm); HANDLE: BLACK CARBON FIBER/STABILIZED ROSE WOOD SCALES, DOUBLE BLUE ANODIZED TITANIUM LINERS; LOCK MECHANISM: MODIFIED LOCKING-LINER

AVAILABLE BLADE CONFIGURATIONS — Model 690, Model 690S, Model 690SC, Model 690SC1. See inside back cover for detailed listing of configurations, pricing and material specifications.

O S B O R N E



MODEL 770

MODEL 770 AXIS GENT FOLDER

Gentlemen, start your engines! Like a fine European sports car engineered for performance, built of the latest materials and technologies, the **NEW!** Model 770 blows away the competition. © Designer Warren Osborne, using carbon fiber, carved out banking curves and smooth running straight-a-ways for a handle revved up to please. These are set-off nicely by a broken line patterned stainless steel backspacer. Drop in the infamous **AXIS** locking mechanism with sporty dual-thumb studs for quick and incredibly smooth in-and-out blade function. © Comes with removable carry-clip for convenient parking. © One lap with the Model 770 and you quickly appreciate its precision fit and styling able to deliver a first place finish every time out—right down to the checkered flag. It's a winner!

MODEL 770 OSBORNE—BLADE MATERIAL: 154CM STAINLESS STEEL HARDENED TO 59-61HRC. LENGTH: 2.80" (7.14cm). THICKNESS: .114" (2.90mm). OPEN: 6.50" (16.50cm). CLOSED: 3.75" (9.50cm). WEIGHT: 1.80oz (51gm). HANDLE: BLACK CARBON FIBER SCALES. DOUBLE 410 STAINLESS STEEL PARTIAL LINERS. LOCK MECHANISM: AXIS LOCK.

AVAILABLE BLADE CONFIGURATIONS — Model 770, Model 770S, Model 770BC1, Model 770BC2. See inside back cover for detailed listing of configurations, pricing and material specifications.

T E R Z U O L A



MODEL 450

MODEL 450 PARK AVENUE GENT FOLDER

Dressed for success. Conservative attitudes and corporate overtones give credence to this pure gentleman's knife. The **NEW!** Model 450 Park Avenue™ was designed by Benchmade's newest custom design team member Bob Terzuola. © Its distinguished, **BC1™** (Boron Carbide) charcoal colored blade and anodized industrial gray handles are well suited for those times in the executive world where having an edge makes the difference. A stainless steel locking-liner and thumb-stud opener work smart for simple function. And to make sure it doesn't get lost in those deep pockets, the Model 450 sports a classy silver chain with lapel hook.

MODEL 450 PARK AVENUE—BLADE MATERIAL: 154CM STAINLESS STEEL HARDENED TO 59-61HRC. LENGTH: 2.68" (6.80cm). THICKNESS: .090" (2.29mm). OPEN: 6.00" (15.24cm). CLOSED: 3.33" (8.45cm). WEIGHT: 1.50oz (42gm). HANDLE: ANODIZED 6061 T6 ALUMINUM SCALES. 410 STAINLESS STEEL LINER. LOCK MECHANISM: MODIFIED LOCKING-LINER.

AVAILABLE BLADE CONFIGURATIONS — Model 450BC1. See inside back cover for detailed listing of configurations, pricing and material specifications.

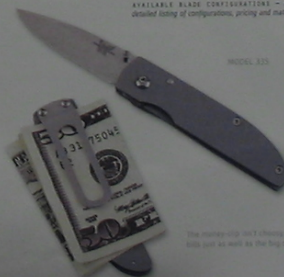
P A R D U E

MODEL 335 BIG SPENDER GENT FOLDER

Cash in on the **NEW!** Model 335 Big Spender™ money-clip knife. A Mel Pardue design variation of his popular Model 330 gent. The polished stainless steel framework with Benchmade's modified locking-liner leverages its traditional blade shape for a multitude of daily uses. Where the Model 335 really shines though, is in its physical presence, or more importantly, lack of it. Even with its money-clip, you will be impressed by the overall "thinness" of the knife. Of course actual performance may vary by owner depending on how many bills are inserted under the clip...

MODEL 335 BIG SPENDER—BLADE MATERIAL: 154CM STAINLESS STEEL HARDENED TO 59-61HRC. LENGTH: 2.30" (6.30cm). THICKNESS: .070" (1.78mm). OPEN: 5.70" (14.48cm). CLOSED: 3.40" (8.64cm). WEIGHT: 1.68oz (47gm). HANDLE: 410 STAINLESS STEEL SCALES/LINERS. LOCK MECHANISM: MODIFIED LOCKING-LINER.

AVAILABLE BLADE CONFIGURATIONS — Model 335, 335S. See inside back cover for detailed listing of configurations, pricing and material specifications.



MODEL 335

The money-clip isn't a money-clip. It holds your bills just as well as the Big Spender.

P A R D U E



MODEL 330S

MODEL 330 GENT FOLDER

Here's a contemporary gentleman's pocket knife. Designer Mel Pardue applied his design prowess to the Model 330 and gave substance to the quotation, "less is more." Way more when you consider the double titanium liners with orange peel finish, partnered with partial black G10 scales for an overbuilt design to impress. Beyond the handle, a stylish blade offers functional utility and lasting sharpness due to its high-grade steel. Reliable blade lock-up is derived from the modified locking-liner fashioned into right its handle. The only problem with the Model 330—it's so slim and lightweight that you may just forget you're carrying it. Sorry, we'll have work on that.

MODEL 330 PARDUE—BLADE MATERIAL: 154CM STAINLESS STEEL HARDENED TO 59-61HRC. LENGTH: 2.30" (5.84cm). THICKNESS: .070" (1.78mm). OPEN: 5.70" (14.48cm). CLOSED: 3.40" (8.64cm). WEIGHT: 1.30oz (37gm). HANDLE: BLACK G-10 PARTIAL SCALES, DOUBLE TITANIUM LINERS. LOCK MECHANISM: MODIFIED LOCKING-LINER.

AVAILABLE BLADE CONFIGURATIONS — Model 330, 330S. See inside back cover for detailed listing of configurations, pricing and material specifications.

P A R D U E

MODEL 850 GENT FOLDER

Hand finishing and world class materials give validity to the Model 850. A Mel Pardue design whose production quality approaches that of a custom maker. Visually striking from first sight, the rainbow anodized titanium liners and bolsters are played off nicely against the ivory micarta scales. Together they create a classic elegance further accentuated by the simple purity of the Model 850 form. A modified locking-liner and thumb-stud opener give easy function to the utility blade style. Knives come with a natural suede pouch to help maintain that fresh look through the years.

MODEL 850 PARDUE—BLADE MATERIAL: 154CM STAINLESS STEEL HARDENED TO 59-61HRC. LENGTH: 2.80" (7.11cm). THICKNESS: .100" (2.54mm). OPEN: 6.70" (17.00cm). CLOSED: 3.90" (9.90cm). WEIGHT: 2.60oz (74gm). HANDLE: WHITE MICARTA SCALES, RAINBOW ANODIZED TITANIUM LINERS/BOLSTERS. LOCK MECHANISM: MODIFIED LOCKING-LINER.

AVAILABLE BLADE CONFIGURATIONS — Model 850, 850S. See inside back cover for detailed listing of configurations, pricing and material specifications.

This Model 850 is now available with the Micarta scales and spine.



MODEL 850S

8 **BENCHMADE**

E L I S H E W I T Z

MODEL 886 BLUE STAR FOLDER

Something old, something new and something blue... Sounds like a match made in heaven. An Allen Elishewitz design, the **NEW!** Model 886 is a culmination of all the best parts of several previous Benchmade knives. The sleek, spear-point blade is easily actuated with the thumb-stud. A stylish handle shape with flowing lines and purposeful curves give the Model 886 commendable form and function, especially in a smaller sized knife. Grip comes from textured black G10 scales which are set-off nicely against the midnight-blue anodized titanium liners. Our modified locking-liner gives you reliably solid, single-hand function. Comes with removable carry-clip and lanyard hole.

MODEL 886 BLUE STAR—BLADE MATERIAL: 154CM STAINLESS STEEL HARDENED TO 59-61HRC. LENGTH: 3.25" (8.26cm). THICKNESS: .100" (2.54mm). OPEN: 7.40" (18.80cm). CLOSED: 4.30" (10.92cm). WEIGHT: 2.50oz (71gm). HANDLE: BLACK G-10 SCALES, DOUBLE BLUE ANODIZED TITANIUM LINERS. LOCK MECHANISM: MODIFIED LOCKING-LINER.

AVAILABLE BLADE CONFIGURATIONS — Model 886, 886S, 886ST, 886SRT. See inside back cover for detailed listing of configurations, pricing and material specifications.



MODEL 886

P A R D U E

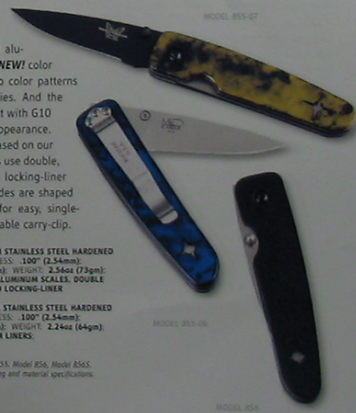
MODEL 855 & MODEL 856 FOLDERS

Put a little color in your pocket... The Model 855 with color-anodized aluminum scales will be offered in two **NEW!** color variations for 2001. Each of the two color patterns will be produced in limited quantities. And the Model 856 is the same design, except with G10 scales for a more conservative appearance. Both models are a design variation based on our Mel Pardue Model 850. These models use double titanium liners and the modified locking-liner mechanism for reliable function. Blades are shaped for utility with thumb-stud opener for easy, single-hand access. Each comes with removable carry-clip.

MODEL 855 PARDUE—BLADE MATERIAL: 154CM STAINLESS STEEL HARDENED TO 59-61HRC. LENGTH: 2.80" (7.11cm). THICKNESS: .100" (2.54mm). OPEN: 6.70" (17.00cm). CLOSED: 3.90" (9.90cm). WEIGHT: 2.56oz (73gm). HANDLE: MULTI-COLORED ANODIZED 6061-T6 ALUMINUM SCALES, DOUBLE TITANIUM LINERS. LOCK MECHANISM: MODIFIED LOCKING-LINER.

MODEL 856 PARDUE—BLADE MATERIAL: 154CM STAINLESS STEEL HARDENED TO 59-61HRC. LENGTH: 2.80" (7.11cm). THICKNESS: .100" (2.54mm). OPEN: 6.70" (17.00cm). CLOSED: 3.90" (9.90cm). WEIGHT: 2.24oz (64gm). HANDLE: BLACK G10 SCALES, DOUBLE TITANIUM LINERS. LOCK MECHANISM: MODIFIED LOCKING-LINER.

AVAILABLE BLADE CONFIGURATIONS — Model 855, Model 856, Model 856S. See back cover for detailed listing of configurations, pricing and material specifications.



MODEL 855-ST

MODEL 856-100

MODEL 856

www.benchmade.com 9

O S B O R N E

MODEL 942SST

The 940's are truly a treat to behold. Once you put one in your hand, the superior design qualities are obvious.



MODEL 940

MODEL 940 & MODEL 942 AXIS FOLDERS

A refreshing design whose form exemplifies what Warren Osborne believes important... function and quality. The functional smoothness of the AXIS lock compliments well the purity of design in the Model 940 and the **NEW!** Model 942. A modified reverse tanto blade shape offers up plenty of edge for most cutting tasks. The aluminum handle is slender with slight curvature and contouring for improved grip. A color anodized titanium backspacer adds additional grip with its unique tread like pattern cut into it. Finger treads laser cut into the liners present added blade control when needed. Its carry-clip is movable to either handle side. The Model 940 and Model 942 make the cut for sharp tools, and world class looks!



MODEL 940 & 942 OSBORNE—BLADE MATERIAL: 154CM STAINLESS STEEL HARDENED TO 59-61HRC. LENGTH: 3.40" (8.64cm); THICKNESS: .115" (2.92mm); OPEN: 7.87" (19.99cm); CLOSED: 4.47" (11.35cm). WEIGHT: 2.90oz (82g); HANDLE COLOR ANODIZED 6061-T6 ALUMINUM, DOUBLE 410 STAINLESS STEEL LINERS. COLOR ANODIZED TITANIUM BACKSPACER. LOCK MECHANISM: AXIS LOCK

AVAILABLE BLADE CONFIGURATIONS — Green/Magenta: Model 940, Model 940S; Model 942SST, Model 942SST; Black/Blue: Model 942, Model 942S; Model 942S, Model 942SST. See inside back cover for detailed listing of configurations, pricing and material specifications.

E L I S H E W I T Z

MODEL 735SST

With the introduction of the NEW! Model 735 with green and black scales—the only problem is which color to get...



MODEL 730

MODELS 730 & 735 ARES AXIS FOLDERS

Ares. The Greek god of war. Fortunately the only battle you have to worry about is which model color to choose. The Model 730 and the **NEW!** Model 735 are an Allen Elishewitz design that takes mortal cutting tools to a much loftier level. Handles are fashioned of a unique two-toned G10 which is dynamically shaped for personal distinction and appreciable performance. Just below the handle surface are double stainless steel liners with finger treads for improved control, and liners are also cleverly skeletonized to lighten the load. And, you can get to the point quickly with the Ares spear-point blade shape and dual thumb-stud openers. Combine that with the patented AXIS locking mechanism for a function you only dreamed of until now. Both models come with movable carry-clip and lanyard hole for added security.



MODELS 730 & MODEL 735 ARES—BLADE MATERIAL: 154CM STAINLESS STEEL HARDENED TO 59-61HRC. LENGTH: 3.60" (9.14cm); THICKNESS: .114" (2.90mm); OPEN: 8.20" (20.83cm); CLOSED: 4.70" (11.94cm). WEIGHT: 4.40oz (125g); HANDLE: MULTI-COLORED G-10 SCALES, DOUBLE 410 STAINLESS STEEL LINERS. LOCK MECHANISM: AXIS LOCK

AVAILABLE BLADE CONFIGURATIONS — Burgundy/Black: Model 730, Model 730S; Model 730S, Model 730SST; Green/Black: Model 735, Model 735S; Model 735S, Model 735SST. See inside back cover for detailed listing of configurations, pricing and material specifications.

M C H E N R Y
W I L L I A M S



MODELS 710 & MODEL 705 AXIS FOLDERS

The design that started the AXIS revolution. Custom knife making duo Bill McHenry and Jason Williams used the Model 710 to introduce the knife world to AXIS for unprecedented single-hand ambidextrous function. This knife, with its long lines and comfortable curves offers a whole handful of cutting tool utility. The generous blade features a slight reverse-curve grind for improved cutting efficiencies. Textured G10 covers the handle sides to provide for secure grip, and the double liners have finger treads positioned near the handle front for added control. Comes with movable steel carry-clip. And if you prefer a smaller knife with all the same quality features and design, the Model 705 comes with a 2.95" blade.

MODEL 710 AXIS—BLADE MATERIAL: 154CM STAINLESS STEEL HARDENED TO 59-61HRC OR M2 HIGH-SPEED STEEL HARDENED TO 60-62HRC. LENGTH: 3.90" (9.90cm). THICKNESS: .115" (2.92mm). OPEN: 8.80" (22.34cm). CLOSED: 4.90" (12.44cm). WEIGHT: 4.50oz (128gm). HANDLE: BLACK G-10 SCALES, DOUBLE 410 STAINLESS STEEL LINERS. LOCK MECHANISM: AXIS LOCK

AVAILABLE BLADE CONFIGURATIONS — Model 710, Model 710S, Model 710ST, Model 710SR, Model 710SR, Model 710SR. See inside back cover for detailed listing of configurations, pricing and material specifications.

MODEL 705 AXIS—BLADE MATERIAL: 154CM STAINLESS STEEL HARDENED TO 59-61HRC. LENGTH: 2.95" (7.50cm). THICKNESS: .100" (2.54mm). OPEN: 6.75" (17.15cm). CLOSED: 3.80" (9.65cm). WEIGHT: 2.70oz (77gm). HANDLE: BLACK G-10 SCALES, DOUBLE 410 STAINLESS STEEL LINERS. LOCK MECHANISM: AXIS LOCK

AVAILABLE BLADE CONFIGURATIONS — Model 705, Model 705S, Model 705SR, Model 705SR. See inside back cover for detailed listing of configurations, pricing and material specifications.

MODEL 720 & MODEL 721 AXIS FOLDERS

Solid. That very much defines Mel Pardue's design of the Model 720 along with the NEW! Model 721. Both models offer the same high-grade features, the only difference being the aluminum handle scales with laser etched logo on the Model 720. Handle scales on the 721 are fashioned of G10 for a lighter tool. Superior, single-hand function is achieved from the patented AXIS lock and dual thumb-stud openers. The generous Bowie blade shape offers cutting versatility for maximum benefit. Handles are shaped to flood the grip with security, and the perimeters are contoured to further enhance comfort. Double liners feature recessed finger treads to improve blade control. Both models come with movable carry-clip.

MODEL 720 AXIS—BLADE MATERIAL: 154CM STAINLESS STEEL HARDENED TO 59-61HRC. LENGTH: 3.25" (8.26cm). THICKNESS: .115" (2.92mm). OPEN: 7.62" (19.35cm). CLOSED: 4.37" (11.10cm). WEIGHT: 4.30oz (122gm). HANDLE: BLACK ANODIZED 6061-T6 ALUMINUM SCALES, DOUBLE 410 STAINLESS STEEL LINERS. LOCK MECHANISM: AXIS LOCK

MODEL 721 AXIS—BLADE MATERIAL: 154CM STAINLESS STEEL HARDENED TO 59-61HRC. LENGTH: 3.25" (8.26cm). THICKNESS: .115" (2.92mm). OPEN: 7.62" (19.35cm). CLOSED: 4.37" (11.10cm). WEIGHT: 3.82oz (108gm). HANDLE: BLACK G10 SCALES, DOUBLE 410 STAINLESS STEEL LINERS. LOCK MECHANISM: AXIS LOCK

AVAILABLE BLADE CONFIGURATIONS — Model 720, Model 720S, Model 720SR, Model 720SR, Model 721, Model 721S, Model 721SR, Model 721SR, Model 721SR. See inside back cover for detailed listing of configurations, pricing and material specifications.



MODEL 722 AXIS FOLDER

Looking for tip toughness and overall blade strength? The Model 722 delivers plenty of both with its geometric tanto blade shape and spine thickness. Its unique blade tip is more controllable and is surprisingly more versatile than one may think. And the Model 722 still has enough straight edge leftover to make the cuts. Ergo shaped handles accommodate a range of hand sizes for firm grips, and the raised texture in the G10 makes for some handy traction when the going gets tough. The performance duo of AXIS lock and dual thumb-studs are unbeatable for optimum in and out blade function. Comes with movable steel carry-clip.

MODEL 722 AXIS—BLADE MATERIAL: 154CM STAINLESS STEEL HARDENED TO 59-61HRC. LENGTH: 3.25" (8.26cm). THICKNESS: .115" (2.92mm). OPEN: 7.62" (19.35cm). CLOSED: 4.37" (11.10cm). WEIGHT: 4.00oz (113gm). HANDLE: BLACK G10 SCALES, DOUBLE 410 STAINLESS STEEL LINERS. LOCK MECHANISM: AXIS LOCK

AVAILABLE BLADE CONFIGURATIONS — Model 722, Model 722S, Model 722SR, Model 722SR. See inside back cover for detailed listing of configurations, pricing and material specifications.



E L I S H E W I T Z

MODEL 910 STRYKER & MODEL 905 MINI-STRYKER FOLDER

The military experiences of designer Allen Elishewitz pour out of his award winning Model 910 Stryker® design. And that's definitely a good thing. ☺ Don't let the often misunderstood tanto blade style limit your perception of the great utility offered. The combination of tip design and high-grade steel create a very strong blade from end to end. Its handle delivers all the performance you can handle thanks to its "natural" shape and radius edges. Stryker's G10 scales are founded on double titanium liners with modified locking-liner. The Model 910 is optionally available in M2 high-speed if desired. ☺ And if you prefer a slightly smaller version, the Model 905 Mini-Stryker is your choice! Both Stryker models come with removable carry-clip.



MODEL 910 STRYKER—BLADE MATERIAL: 154CM STAINLESS STEEL HARDENED TO 58-61HRC. LENGTH: 3.70" (9.40cm). THICKNESS: .120" (3.05mm). OPEN: 8.25" (20.94cm). CLOSED: 4.68" (11.89cm). WEIGHT: 3.80oz (108gm). HANDLE: G-10 SCALES, DOUBLE TITANIUM LINERS. LOCK MECHANISM: MODIFIED LOCKING-LINER.

AVAILABLE BLADE CONFIGURATIONS — Model 910, Model 910S, Model 910ST, Model 910SET, Model 910M, Model 910MSR. See inside back cover for detailed listing of configurations, pricing and material specifications.

MODEL 905 MINI-STRYKER—BLADE MATERIAL: 154CM STAINLESS STEEL HARDENED TO 58-61HRC. LENGTH: 2.90" (7.37cm). THICKNESS: .100" (2.54mm). OPEN: 7.10" (18.03cm). CLOSED: 4.10" (10.41cm). WEIGHT: 2.70oz (77gm). HANDLE: BLACK G-10 SCALES, DOUBLE TITANIUM LINERS. LOCK MECHANISM: MODIFIED LOCKING-LINER.

AVAILABLE BLADE CONFIGURATIONS — Model 905, Model 905S, Model 905ST, Model 905SET. See inside back cover for detailed listing of configurations, pricing and material specifications.

E L I S H E W I T Z

MODEL 914 RESCUE STRYKER FOLDER

Help is on the way. The **NEW!** Model 914 is based on our award winning Stryker design which has proven to be a stellar performer for several years now. ☺ Starting with user friendly G10 handles shaped for solid grip when you need it, they're built plenty tough to take the rigors of difficult situations. A modified sheepfoot blade features a down-turned tip for safer blade control, and the fully serrated edge on the Rescue Stryker makes lightning quick work of safety belts or webbing. Our patented modified locking-liner coupled with the thumb-disk opener are a great combination for single-hand function. Comes with removable carry-clip for ease of carry where you can get to it quickly.



MODEL 914 RESCUE STRYKER—BLADE MATERIAL: 6X6-1 STAINLESS STEEL HARDENED TO 58-61HRC. LENGTH: 3.54" (9.04cm). THICKNESS: .120" (3.05mm). OPEN: 8.24" (20.93cm). CLOSED: 4.68" (11.89cm). WEIGHT: 3.80oz (108gm). HANDLE: BLACK G-10 SCALES, DOUBLE TITANIUM LINERS. LOCK MECHANISM: MOD. LOCK-LINER.

AVAILABLE BLADE CONFIGURATIONS — Model 914F, Model 914SF. See inside back cover for detailed listing of configurations, pricing and material specifications.

This full-curve handle of the **NEW!** Model 914 is ideal for rapid cutting of rope, webbing or seat belts.

14 BENCHMADE

B E N C H M A D E

MODEL 750 PINNACLE FOLDER

Overbuilt form and pure function? Yes it is. The Model 750 Pinnacle™ is for those individuals who like to keep things simple. ☺ Our Mono-Lock™ locking mechanism is precision integrated into one of the tumbled titanium handle scales and provides more strength and superior function than many of the ongoing designs coming out of the custom knife industry today. The handles are tumbled to take the edge off for an impressively comfortable grip from two metal slabs. A very strong, uniquely comfortable grip from two metal slabs. A very strong, unique blade shape with thumb-stud opener, offers great utility, and its reverse-curve grind, enhances cutting efficiencies. All screws are threaded into stainless steel inserts for secure hold, including the removable carry-clip screws.



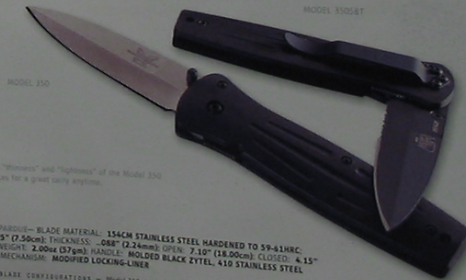
MODEL 750 PINNACLE—BLADE MATERIAL: 154CM STAINLESS STEEL HARDENED TO 58-61HRC. LENGTH: 3.60" (9.15cm). THICKNESS: .115" (2.92mm). OPEN: 8.55" (21.71cm). CLOSED: 4.75" (12.07cm). WEIGHT: 4.40oz (125gm). HANDLE: MACHINED 6AL-4V TITANIUM SCALES/LINERS. LOCK MECHANISM: MONO-LOCK.

AVAILABLE BLADE CONFIGURATIONS — Model 750, Model 750S, Model 750E, Model 750SET. See inside back cover for detailed listing of configurations, pricing and material specifications.

P A R D U E

MODEL 350 FOLDER

Symmetry, balance and modern design add up to one ultra lightweight, low-profile cutting tool— built for maximum performance value. ☺ A patented Mel Pardue design, the Model 350 features a spear-point blade with tapered body, combine to provide sporty yet effective hand hold. Our modified locking-liner provides for convenient and reliable function, and the lock access is ideally positioned for effortless use. Comes complete with removable carry-clip. ☺ Bottom line, the Model 350 delivers high-quality performance at value added pricing.



The "thinness" and "lightness" of the Model 350 makes for a great carry option.

MODEL 350 PARDUE—BLADE MATERIAL: 154CM STAINLESS STEEL HARDENED TO 58-61HRC. LENGTH: 2.95" (7.50cm). THICKNESS: .080" (2.03mm). OPEN: 7.10" (18.00cm). CLOSED: 4.15" (10.50cm). WEIGHT: 2.00oz (57gm). HANDLE: MOLDED BLACK ZYTEL, 410 STAINLESS STEEL LINER. LOCK MECHANISM: MODIFIED LOCKING-LINER.

AVAILABLE BLADE CONFIGURATIONS — Model 350, Model 350S, Model 350E, Model 350SET. See inside back cover for detailed listing of configurations, pricing and material specifications.

ZYTEL is a registered trademark of Dupont.

www.benchmade.com



MODEL 804 AFCK-II & MODEL 814 MINI-AFCK-II FOLDERS

The AFCK models are two of our more popular mainstay designs, and **NEW!** this year, we have redesigned the opener-hole to an oval shape. All holes are not created equally. Benchmade's new oval better accommodates varying thumb sizes, and we still bevel finish the edges for comfort. The blades themselves have long proven to offer generous utility, and we use high-grade steels for lasting sharpness. AFCK's handle ergonomics settle into the hand quite naturally and are scaled with G10 for years of everyday use. Double liners with patented modified locking-liner mechanism provide single-hand-simple, reliable function. Both models come with removable carry-clip and lanyard hole.

MODEL 804 AFCK-II—BLADE MATERIAL: 154CM STAINLESS STEEL HARDENED TO 59-61HRC OR M2 HIGH-SPEED STEEL, HARDENED TO 60-62HRC; LENGTH: 3.90" (9.90cm); THICKNESS: .125" (3.18mm); OPEN: 9.20" (23.37cm); CLOSED: 5.30" (13.46cm); WEIGHT: 4.10oz (116gm); HANDLE: BLACK G-10 SCALES, DOUBLE TITANIUM LINERS; LOCK MECHANISM: MODIFIED LOCKING-LINER

AVAILABLE BLADE CONFIGURATIONS — Model 804, Model 804S, Model 804ST, Model 804SST, Model 804SSR. See inside back cover for detailed listing of configurations, pricing and material specifications.

MODEL 814 MINI-AFCK-II—BLADE MATERIAL: 154CM STAINLESS STEEL HARDENED TO 59-61HRC OR M2 HIGH-SPEED STEEL, HARDENED TO 60-62HRC; LENGTH: 3.25" (8.25cm); THICKNESS: .100" (2.54mm); OPEN: 7.65" (19.43cm); CLOSED: 4.40" (11.18cm); WEIGHT: 3.00oz (85gm); HANDLE: BLACK G-10 SCALES, DOUBLE 410 STAINLESS STEEL LINERS; LOCK MECHANISM: MODIFIED LOCKING-LINER

AVAILABLE BLADE CONFIGURATIONS — Model 814, Model 814S, Model 814ST, Model 814SST, Model 814SS, Model 814SSR. See inside back cover for detailed listing of configurations, pricing and material specifications.

MODEL 803 TSEK & MODEL 813 MINI-TSEK FOLDERS

NEW! The "Tactical Safety Equipment Knife" designs incorporate the proven handle performance of the AFCK models and introduces to them a modern blade shape. This new blade style offers increased blade surface and a thumb-stud opener for those who prefer it over a hole. Blades are ground of GIN-1 stainless steel with a strengthened tip and treaded thumb perch on the spine. As mentioned, the handles are the very same as those described above in the AFCK models. The Model 803 and Model 813 come with removable carry-clip and lanyard hole.

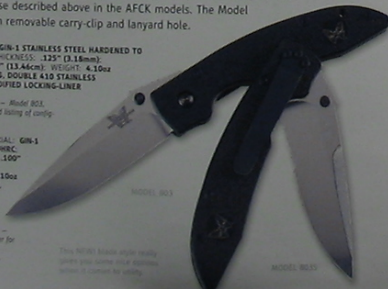
MODEL 803 TSEK—BLADE MATERIAL: GIN-1 STAINLESS STEEL HARDENED TO 58-60HRC; LENGTH: 3.90" (9.91cm); THICKNESS: .125" (3.18mm); OPEN: 9.20" (23.37cm); CLOSED: 5.30" (13.46cm); WEIGHT: 4.10oz (116gm); HANDLE: BLACK G-10 SCALES, DOUBLE 410 STAINLESS STEEL LINERS; LOCK MECHANISM: MODIFIED LOCKING-LINER

AVAILABLE BLADE CONFIGURATIONS — Model 803, Model 803S. See inside back cover for detailed listing of configurations, pricing and material specifications.

MODEL 813 MINI-TSEK—BLADE MATERIAL: GIN-1 STAINLESS STEEL HARDENED TO 58-60HRC; LENGTH: 3.14" (8.02cm); THICKNESS: .100" (2.54mm); OPEN: 7.54" (19.26cm); CLOSED: 4.44" (11.33cm); WEIGHT: 3.10oz (88gm); HANDLE: BLACK G-10 SCALES, DOUBLE 410 STAINLESS STEEL LINERS; LOCK MECHANISM: MODIFIED LOCKING-LINER

AVAILABLE BLADE CONFIGURATIONS — Model 813, Model 813S. See inside back cover for detailed listing of configurations, pricing and material specifications.

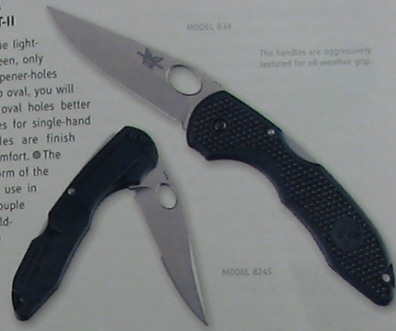
This NEW! blade shape really opens up some other options when it comes to utility.



MODEL 834 ASCENT-II & MODEL 824 MINI-ASCENT-II

These are still the same great-value lightweight folders they have always been, only now we have re-engineered the opener-holes to a **NEW!** oval shape. Once you go oval, you will never go back... The Ascent-II oval holes better accommodate varying thumb sizes for single-hand functional leverage. Opener holes are finish beveled on both sides for added comfort. The Ascents' real value comes in the form of the same more advanced cutting tools. Couple that with lightweight, injection molded Zytel® handles which are shaped and grip-textured for all around usability. Our lock-back mechanism provides a traditional, solid blade lock-up. Both models come with stainless steel carry-clips.

The handles are aggressively textured for all-weather grip.



MODEL 834 ASCENT-II—BLADE MATERIAL: 154CM STAINLESS STEEL HARDENED TO 59-61HRC; LENGTH: 3.50" (8.9cm); THICKNESS: .115" (2.92mm); OPEN: 8.25" (20.96cm); CLOSED: 4.875" (12.38cm); WEIGHT: 2.70oz (77gm); HANDLE: MOLDED BLACK ZYTEL, REVERSIBLE STEEL CARRY-CLIP; LOCK MECHANISM: MID-LOCK LOCKING BACK

AVAILABLE BLADE CONFIGURATIONS — Model 834, Model 834S, Model 834SST. See inside back cover for detailed listing of configurations, pricing and material specifications.

MODEL 824 MINI-ASCENT-II—BLADE MATERIAL: 154CM STAINLESS STEEL HARDENED TO 59-61HRC; LENGTH: 2.90" (7.37cm); THICKNESS: .105" (2.67mm); OPEN: 6.75" (17.15cm); CLOSED: 4.00" (10.16cm); WEIGHT: 1.80oz (51gm); HANDLE: MOLDED BLACK ZYTEL, REMOVABLE STEEL CARRY-CLIP; LOCK MECHANISM: REAR-LOCK LOCKING BACK

AVAILABLE BLADE CONFIGURATIONS — Model 824, Model 824S, Model 824SST. See inside back cover for detailed listing of configurations, pricing and material specifications.

MODEL 831



MODEL 831 ASCENT-II UTILITY & MODEL 821 MINI-ASCENT-II UTILITY

If you're looking for inexpensive, lightweight utility in a Benchmade or any make of knife for that matter, the **NEW!** Ascent-II utility folders are it. With our new blade design offering great strength, sharpness and functional shape you can't go wrong. The lightweight, injection molded Zytel® handles fit the hand well, with a texture to grip to as well. A lock-back mechanism delivers a traditional, solid blade lock-up. Both models come with steel carry-clips.

MODEL 831 ASCENT-II UTILITY—BLADE MATERIAL: GIN-1 STAINLESS STEEL HARDENED TO 58-60HRC; LENGTH: 3.50" (8.9cm); THICKNESS: .105" (2.67mm); OPEN: 8.25" (20.96cm); CLOSED: 4.875" (12.38cm); WEIGHT: 2.70oz (77gm); HANDLE: MOLDED BLACK ZYTEL, REVERSIBLE STEEL CARRY-CLIP; LOCK MECHANISM: MID-LOCK LOCKING BACK

AVAILABLE BLADE CONFIGURATIONS — Model 831, Model 831S. See back cover for detailed listing of configurations, pricing and material specifications.

MODEL 821 MINI-ASCENT-II UTILITY—BLADE MATERIAL: GIN-1 STAINLESS STEEL HARDENED TO 58-60HRC; LENGTH: 2.40" (6.10cm); THICKNESS: .105" (2.67mm); OPEN: 6.75" (17.15cm); CLOSED: 4.00" (10.16cm); WEIGHT: 1.90oz (53gm); HANDLE: MOLDED BLACK ZYTEL, REMOVABLE STEEL CARRY-CLIP; LOCK MECHANISM: REAR-LOCK LOCKING BACK

AVAILABLE BLADE CONFIGURATIONS — Model 821, Model 821S. See back cover for detailed listing of configurations, pricing and material specifications.

ELISHAWITZ

MODEL 140 NIMRAVUS & MODEL 145 NIMRAVUS CUB FIXED BLADES

If it's a fixed blade you've been looking for...you can stop looking. The Allen Elshewitz designed Model 140 Nimravus, and its little brother the Model 145 Nimravus Cub—deliver the prowess you'd only dreamed of. Don't let the modern tip design and black BT2 coating fool you. This unique blade shape is truly versatile, and it can be maneuvered easily, under total control—which is more than half the challenge of a larger knife design. As for that black coating, it helps to keep the knife rust-free from end to end. The blade's full-tang design is not only much stronger, but is used to enhance the handle as well. The tang slightly protrudes from beneath the handle scales for a handy "blind" reference as to blade position. Positive indexing notches on the blade spine along with finger grooves in the grip make for appreciable safety, too. G10 handle scales are obvious to nature's toughest elements and are purposefully sculpted to conform to your hand. Both Nimravus sheaths are form fitted of Kydex® and feature a unique NEW! thumb-toggle lock which pressures/wedges against the knife handle for secure carry. And the belt and lashing loop are molded of a tough thermal plastic for rugged, lasting wear. © Whichever size Nimravus model you choose, you're going to get a lightweight, modern cutting tool—and a new favorite knife.



MODEL 140 NIMRAVUS—BLADE MATERIAL: 154CM STAINLESS STEEL HARDENED TO 58-60HRC OR M2 HIGH-SPEED STEEL HARDENED TO 60-62HRC. LENGTH: 4.50" (114.3mm). THICKNESS: .115" (2.9mm). OVERALL: 9.45" (24.06cm). WEIGHT: 4.20oz (117.5gm). HANDLE: FULL-TANG, BLACK G-10 SCALES. SHEATH: KYDEX/THERMAL PLASTIC. WEIGHT: 4.00oz (117.0gm).

AVAILABLE BLADE CONFIGURATIONS — Model 140RT, Model 140ST, Model 140HS, Model 140HSR. See inside back cover for detailed listing of configurations, pricing and material specifications.

MODEL 145 NIMRAVUS CUB—BLADE MATERIAL: 154CM STAINLESS STEEL HARDENED TO 58-60HRC OR M2 HIGH-SPEED STEEL HARDENED TO 60-62HRC. LENGTH: 3.85" (9.77cm). THICKNESS: .115" (2.92mm). OVERALL: 7.82" (19.86cm). WEIGHT: 4.00oz (112.6gm). HANDLE: FULL-TANG, BLACK G-10 SCALES. SHEATH: KYDEX/THERMAL PLASTIC. WEIGHT: 2.50oz (70gm).

AVAILABLE BLADE CONFIGURATIONS — Model 145RT, Model 145ST, Model 145HSRT, Model 145HS, Model 145HSR. See inside back cover for detailed listing of configurations, pricing and material specifications.



An innovative thumb-toggle pressure/wedge lock-up with wing-back release.

The built-in indexing notches on the blade spine are available for a variety of carry options.



MODEL 145RT

MODEL 145ST

The Benchmade is not your typical fixed blade design. It's better. From modern blade shape to rectangular handle, whatever you're going to do.

ELISHAWITZ

MODEL 100 R&R FIXED BLADE

Run the rapids with the NEW! Model 100 River/Rescue clipped onto your PFD. The Model 100 with full-tang fixed blade design, features a modified sheepfoot blade shape for safer control on the water. And still there is plenty of edge to offer utility for more conventional use. Handle scales are sculpted G10 for a quick-grab, natural fitting grip, and the blade tang protrudes slightly from beneath the handle scales for a handy "blind" reference as to blade orientation. The Model 100 comes with a form fitted Kydex® sheath featuring a unique thumb-toggle lock which pressures/wedges against the knife handle, allowing for inverted carry if desired. A movable "clip-on" carry-clip on the sheath provides for quick/secure attachment to webbing or belts.

Sheath has a clip-on carry-clip for convenient, secure carry. And the thumb-toggle lock/release system is a nice-in-the-hand feature to boot.

MODEL 100—BLADE MATERIAL: GIN-1 STAINLESS STEEL HARDENED TO 58-60HRC. LENGTH: 8.23" (20.8cm). THICKNESS: .114" (2.90mm). OVERALL: 7.50" (19.05cm). WEIGHT: 4.60oz (128.6gm). HANDLE: FULL-TANG, BLACK G-10 SCALES. SHEATH: KYDEX/THERMAL PLASTIC. WEIGHT: 2.40oz (68gm).

AVAILABLE BLADE CONFIGURATIONS — Model 100, Model 100S. See back cover for detailed listing of configurations, pricing and material specifications.

MODEL 100

The 100S, Model 100S is a nice addition to any one who needs something a little lighter and "close fit" than the 100.

BENCHMADE

MODELS 145, 720 & 814 REALTREE KNIVES

For the outdoorsman who wants to stay outdoors... at least in spirit. We have taken our standard Models 145, 720 and 814, and applied the RealTree® Hardwoods® pattern to the handle scales. The application process is much the same that is used throughout the industry for a durable lasting finish. These models are limited to one specific blade configuration per each (see specs below). So if you want to blend in outdoors—check out the Benchmade Hardwoods. (Refer to the regular model, catalog listings and/or price list for product specifications).

RealTree® Hardwoods® are registered trademarks of RealTree, Inc.



MODEL 145RT

MODEL 720RT

MODEL 814RT

Now you can get some of the most beautiful RealTree® Hardwoods® patterns in your pocket. Or, for that matter, in your hand.

E L I S H E W I T Z

The NEW! Model 160 TK-1 is ideal for those times when carrying a knife anywhere else isn't possible. By using the beaded chain and wearing it around your collar you can get to it very efficiently. A quick tug on the handle frees the knife from its sheath.



MODEL 160S8T

MODEL 160 TK-1 TETHER KNIFE

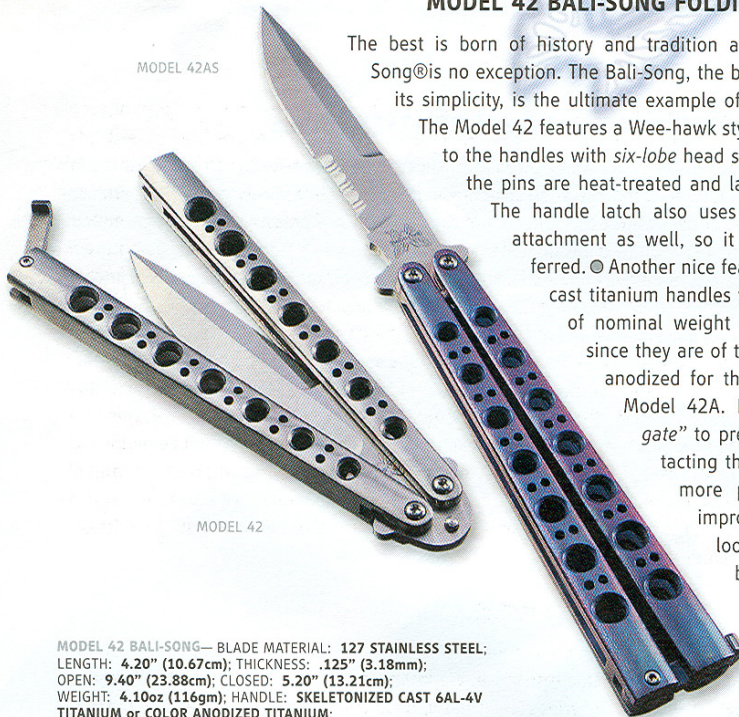
Why? For those situations when it would be handier to wear a knife where you can get to it above the waist. The NEW! Model 160 TK-1 is ideal to wear across the chest or slung around the collar and under your arm, either way, you can readily access the TK-1. A skeletonized design and minimal size are balanced by the convenient utility that can be had from the 2.00" blade, complete with treaded thumb perch for added safety. The handle portion is coated with thermal plastic for optimum traction and it is offered in black, green and gray colors. All the TK-1 knives come with a pressure fit black Kydex® sheath and sizable 64-inch beaded chain. The length of chain allows you to wear the tether knife across the chest/under the arm, or shortened to hang around the collar for mid-chest position.

MODEL 160 ELISHEWITZ—BLADE MATERIAL: GIN-1 STAINLESS STEEL HARDENED TO 58-60HRC; LENGTH: 2.00" (5.50cm); THICKNESS: .125" (3.18mm); OVERALL: 5.75" (14.50cm); WEIGHT: 1.50oz (42gm); HANDLE: FULL-TANG, THERMAL PLASTIC COATING; SHEATH: KYDEX/THERMAL PLASTIC; WEIGHT: 1.00oz (28gm)

AVAILABLE BLADE CONFIGURATIONS — Model 160, Model 160S, Model 160BT, Model 160S8T, Model 160GR, Model 160SGR, Model 160GY, Model 160SGY. See inside back cover for detailed listing of configurations, pricing and material specifications.

B E N C H M A D E

MODEL 42 BALI-SONG FOLDING KNIFE



MODEL 42AS

MODEL 42

The best is born of history and tradition and the Benchmade Bali-Song® is no exception. The Bali-Song, the butterfly knife awesome in its simplicity, is the ultimate example of form following function.

The Model 42 features a Wee-hawk style blade which is secured to the handles with six-lobe head screw style pivot-pins, and the pins are heat-treated and larger than previous ones.

The handle latch also uses a screw head pivot-pin attachment as well, so it may be removed if preferred. Another nice feature are the skeletonized cast titanium handles which are very tough and of nominal weight for better balance. And, since they are of titanium they can be color anodized for that "extra" touch like the Model 42A. Handles feature a "latch gate" to prevent the latch from contacting the blade, and they have a more pronounced contour for improved grip. So if you're looking for the ultimate in basic form and simple function—this is it.

MODEL 42 BALI-SONG—BLADE MATERIAL: 127 STAINLESS STEEL; LENGTH: 4.20" (10.67cm); THICKNESS: .125" (3.18mm); OPEN: 9.40" (23.88cm); CLOSED: 5.20" (13.21cm); WEIGHT: 4.10oz (116gm); HANDLE: SKELETONIZED CAST 6AL-4V TITANIUM or COLOR ANODIZED TITANIUM; LOCK MECHANISM: INTEGRATED TITANIUM LATCH

AVAILABLE BLADE CONFIGURATIONS — Model 42, Model 42S, Model 42A, Model 42AS. See inside back cover for pricing and material specifications.

THE BENCHMARK DIFFERENCE



What do you get when you choose Benchmark? Rocket science. Ok, well almost. It all starts with an Engineering Department hell bent on getting it right—before a machine ever starts to turn. Whether it's working with one of our Custom Design Team members or, developing one of Benchmark's own designs, our engineers are continually checking and rechecking for perfection. With a Benchmark, each piece is its own individual manufacturing process which has to assemble with the rest of the components as a "go together" finished knife. From the latest computer aided design software and modeling technologies to just plain know-how gained from years of experience, it's a test of wills. And, the customer always wins. ● The Benchmark arsenal also contains ultra-modern machining centers capable of spot-on prototyping designs prior to production release. Highly skilled machinists are capable of hitting tolerances as little as .0005 of an inch if needed. ● It may seem like a lot of effort for just a knife. It is. Which is exactly why Benchmark knives aren't "just a knife"... they are engineered cutting tools built to exacting standards with a fierce determination of purpose. Form and function. Yours.



INGREDIENTS

What's it made of? What is that black stuff on the handle? Which blade steel is best? These are just a few of the many questions we are asked when people see our knives, and they basically come down to one common point... Benchmark uses a variety of modern materials specially selected for their superior performance characteristics—regardless of their manufacturing difficulty. ● We strongly believe that if you're going to put so much effort into designing a custom quality knife, then it only makes sense to build it of the materials which compliment its form and enhance its function. It's exactly this kind of thinking that has led to Benchmark having been the first knife manufacturer to utilize many of these materials, especially to this level. And in some instances it's more than just using a superior material in a product— it's what we do to it to bring out the extra edge which makes a Benchmark that much better in performance. Bottom line— we would much rather overbuild our knives than risk the alternative. Your welcome. ● Following is a Benchmark materials list with a brief description of the component material characteristics and some of the special processes we use.

HANDLES

CARBON FIBER *NEW!* this year we have used black, plain weave patterned carbon fiber on several models. A modern, very "secretive" make-up of alternating woven layers of carbon strands and epoxy which provides exceptional strength to weight ratios. And it looks pretty hot too. **STABILIZED WOOD** *NEW!* this year Benchmark implemented stabilized wood into some new model handles. Select hardwood veneers are vacuum impregnated with special dyes and resins. Sheets are then layered and pressured under tremendous heat and pressure. This process creates a fashionable, stabilized real wood medium for a durable and attractive composite. **6061 T-6 ALUMINUM** Originally developed as a premium aircraft grade aluminum which is aged to a T-6 temper for improved toughness. We precisely machine to spec, bead blast for texture and then anodize with hard oxide coating for enhanced grip and "wearability." **G-10** Developed as a circuit board material capable of withstanding extreme conditions without distortion or negative effect. Impervious to moisture or liquid for ideal outdoor toughness. A highly compressed epoxy and woven glass composite providing nearly indestructible strength and is of nominal weight. We laser cut and machine finish to final spec. Benchmark uses black, and last year became the first manufacturer to utilize multi-color layered G-10 for a unique visual result. **ZYTEL®** A lightweight glass filled nylon, engineered for strength and durability while still offering moldable versatility. It's widely used in the automotive industry in engine related components. For our purpose, the injection molded handles offer great lightweight, durable performance at an inherently economical value to you.

LINERS

6AL-4V TITANIUM A slightly lighter weight, modern metal offering incredible strength and resiliency. Key properties include non-magnetic and corrosion resistance. We laser cut to form and machine finish to final spec. **410 STAINLESS STEEL** An ideal 400 Series steel offering good corrosion resistance and workability. We laser cut material to form, machine finish to spec and heat-treat for optimum performance strength.

BLADES

154CM STAINLESS STEEL USA made by Crucible Steel. Developed for use in military jet engine turbine blades during the war. Due to its high carbon/chromium content it offers exceptional wear resistance. We use it in more of our knives than any other steel. For blade use, it offers super-fine grain structure which bodes well for excellent lasting edge sharpness. We temper it to a Benchmark "custom" toughness which has proven to offer you higher than average blade strength.

ATS-34 STAINLESS STEEL A high-chromium/molybdenum alloy steel produced by Hitachi® with virtually identical properties to 154CM. Benchmark used it exclusively for a number of years but, is now transitioning over to 154CM due to availability. Both 154CM and ATS-34 offer the same great performance in our knives.

GIN-1 NEW! Benchmark has used this steel in the past and is now offering it again in several models. It offers nearly the same qualities as the 154CM or ATS-34 but is slightly more corrosion resistant which is always nice to have.

M2 HIGH-SPEED STEEL A very tough tool grade steel used for cutting steel and offering high abrasion or wear resistance. Offers high-impact strength with incredible edge holding properties. Non-stainless by nature, but we heat-treat and apply our proprietary BT2® coating which provides a high-level of corrosion resistance.

COMMON BLADE STEELS

STEEL	CARBON	CHROMIUM	COBALT	COPPER	MAGANESE	MOLYBDENUM	NICKEL	PHOSPHOROUS	SILICON	SULPH	TUNGSTEN	VANADIUM	HRC
154CM	1.05	14.00	-	-	0.50	4.00	-	-	0.30	-	-	-	59-61
ATS-34	1.05	14.00	-	-	0.40	4.00	-	0.03	0.35	0.02	-	-	59-61
GIN-1	0.90	15.50	-	-	0.60	0.30	-	0.02	0.37	0.03	-	-	58-60
M-2	0.95-1.05	3.75-4.50	-	-	0.15-0.40	4.75-6.50	0.30	-	0.20-0.45	-	5.00-6.75	2.25-2.75	60-65
D-2	1.40-1.60	11.00-13.00	-	-	0.60	0.70-1.20	0.30	-	0.60	-	-	1.10	57-61
425 MOD.	0.40-0.54	13.50-15.00	-	-	0.50	0.60-1.00	-	0.035	0.80	0.03	-	0.10	56-60
440A	0.65-0.75	16.00-18.00	-	-	1.00	0.75	-	0.04	1.00	0.03	-	-	55-57
440C	0.95-1.20	16.00-18.00	-	-	1.00	0.75	-	0.04	1.00	0.03	-	-	58-60
AUS-8	0.70-0.75	13.00-14.50	-	-	0.50	0.10-0.30	0.49	0.04	1.00	0.03	-	0.10-0.26	58-59
AUS-10	0.95-1.10	13.00-14.50	-	-	0.50	0.10-0.31	0.49	0.04	1.00	0.03	-	0.10-0.27	59-60
ATS-55	1.00	14.00	0.40	0.20	0.50	0.60	-	-	0.40	-	-	-	60-62
BG-42	1.15	14.50	-	-	0.50	4.00	-	-	0.30	-	-	1.20	61-63
CPM(T)440V	2.15	17.00	-	-	0.40	0.40	-	-	0.40	-	-	5.50	55-57
CPM 3V	0.80	7.50	-	-	-	1.30	-	-	-	-	-	2.75	58-60
SNDVK120C	-	14.00-14.50	-	-	0.35	-	-	-	0.35	-	-	-	54-56

To help you better understand the science of steel, we offer an overview of some of the different elements used to create the steels that we use. Steel is made of iron and carbon in different combinations. When it is heated to certain temperatures and then cooled down at specific rates, it changes the properties of the metal. If you are using the steel for a specific use, such as making blades for knives, you can add different elements to the steel to change the properties and get just what you want out of the metal.

CARBON Carbon must be present in all forms of steel, but the more you add to the mix, the harder the steel becomes. Knife makers generally use between .50 and 1.50-percent carbon in their blades. Any more than that and the steel can become brittle. **MANGANESE** Present in most commercially made steels, Manganese helps to reduce the shock of quenching the blades, which means they are less likely to crack while being made. **CHROMIUM** Chromium helps to increase the hardness, increase the steel toughness and increase the wear resistance. Additionally, it aids in resisting staining and corrosion. 14-percent or more in the mixture qualifies the steel as "stainless" steel, however all steels can rust, just not as easily as those without the high Chromium mix. **MOLYBEDEUM** For steels with a higher carbon content, Molybedeum imparts additional hardness and abrasive resistance to the steel. We take all of these factors into consideration when building your knife. Different uses require different strengths in each blade, and with the Benchmark selection, you are certain to find one that fits your needs.

BLADE COATINGS & CHARACTERISTICS

BC1™ COATING (Boron Carbide) NEW! this year. An extremely hard, thin ceramic coating applied in a vacuum chamber. Its extreme hardness and excellent adhesion provide wear resistance and lubricity while creating a distinctive look in the process. **BT2® COATING** Our own proprietary blade coating is a black Teflon® based polymer offering corrosion protection which exceeds the ASTM-117 specification for saltwater corrosion resistance. And due to its high lubricity, it helps make the knives operate more smoothly. **COMBOEDGE™** Refers to our partially serrated plain blade configuration. Benchmark's serration pattern offers ideal cutting ability for fibrous materials such as webbing, straps, netting or rope. **HEAT-TREAT** We specially heat-treat our blade steels to a "custom toughness" for Benchmark superior performance. Refer to our website at www.benchmark.com for more in-depth details and the complete Benchmark line-up.

A C C E S S O R I E S

"THE BLUE BOX" TOOL KIT

Benchmade uses "six-lobe" headed screws exclusively throughout the assembly of our knives. This unique screw style offers a more "controllable" means of achieving tightness. Occasionally you may want to adjust blade tension, remove the carry-clip or simply check for any loosened screws, so now we offer **The Blue Box** for those purposes. Kit includes bit sizes 6, 7, 8, 10, 15, one phillips head bit and bit holder/extension all self-contained in a molded plastic case which doubles as the handle. Features removable plastic carry-clip on case. (See price list for pricing information.)



All pieces are held securely in place for easy access; compact no-rattle carry.

SOFT SHEATHS

For those individuals who prefer to carry their knives in a sheath we offer a simple but effective design which is available in two sizes. The larger one is the same sheath that comes standard with the Model 9050 AF0. The second is slightly downsized for smaller knives. Both sheaths are made of 1680 denier poly-ballistic nylon with liners and they are edged with nylon for a clean, no-snag finish. They feature Velcro® closures. (See price list for ordering info.)



Heavyweight webbing is secured to back for either horizontal or vertical carry.

LIFESHARP SERVICE

There's never a dull moment with a Benchmade... That's right! We will gladly resharpen your Benchmade knife to a factory razor sharp edge (service does not apply to any serrated portion of the blade). If you prefer us to sharpen your blade, or if you may have neglected to maintain your edge for a while, simply ship your knife to us. We'll not only sharpen it, but we will also inspect the knife for any warranted repairs and "tune" the knife for optimum performance. Simply ship the knife to the Benchmade address, postage paid and insured. Please enclose your return shipping address with \$5.00 to cover handling and return shipping charges.



MILITEC-1®

NEW! We are so impressed with this product that we feature it in our catalog. Now you have the opportunity to take advantage of its superior conditioning qualities too. MILITEC-1 is a "chemically-reacted synthetic-based metal conditioner that protects metal with a constant synthetic-based impregnated molecular structure." Simply put, it delivers constant lubrication; reduces friction and wear; inhibits corrosion; and causes no unwanted material buildup. Traditional lubricants only temporarily coat the metal surfaces which overtime breaks down losing its effectiveness. MILITEC-1 goes beyond by impregnating the metal surface on the molecular level where it won't wipe away. Works great on knives... Yes, even other brands. (See price list for ordering info.)



MILITEC-1 is available in a variety of sizes. The stainless steel applicator needle is ideal for those tough to get to situations.

HRC
59-61
59-61
58-60
60-65
57-61
56-60
55-57
58-60
58-59
59-60
60-62
61-63
55-57
58-60
54-56

ts
en
he
er

eel
an
ese
ing
ase
ix-
out
arts
ion
ade

vac-
cre-
lack
wa-
OM-
ffers
spe-
er to

Show your true colors— if you're a Benchmade fan you will definitely want to checkout these great items emblazoned with the brand of choice. We took special care in selecting items to ensure your satisfaction in getting quality products. After all, like to wearing them, too! You can order directly from Benchmade (please specify sizes), or see your Benchmade dealer. Checkout our website at www.benchmade.com for the most current and complete listing of offerings.



A

A. PRO CAP- NEW! Use your head... show 'em who's boss! This stone wash, unstructured cap is ideal to contain those brain waves escaping from your head. Cap features Benchmade butterfly logo embroidered in black and silver on the front facing along with "HELD TO A HIGHER STANDARD" stitched in silver over the buckle/strap closure. Adjustable, one size fits most all.

ITEM: PRO CAP BLU Retail Price- \$15



B

B. NYLON JACKET- This two-toned blue, vented back jacket is great as a layered outer shell or just to wear by itself. Water repellent, wind resistant, double layer nylon body with mesh lining. The Benchmade logo is embroidered on the left chest in black and silver stitching. Full-zipper front with flapped pockets. Sizes are M - 2XL.

ITEM: BLUE JACKET Retail Price- \$60



C

C. POLAR FLEECE VEST- NEW! Perfect for those days when it's not too cold and it's not too hot— it's just right. That's exactly when this quality charcoal grey, fleece vest earns its colors. Speaking of colors, the Benchmade logo is embroidered on the left chest in blue and silver stitching. Full-zipper front/zipper pockets. Edges trimmed in black. Sizes are M - 2XL.

ITEM: GREY VEST Retail Price- \$60



D

D. BLACK JACKET- NEW! Well sort of... Due to popular demand we brought it back... Features a lined, flat black nylon shell to keep warm on those brisk mornings out and about. The Benchmade logo is embroidered on the left chest in metallic blue and silver stitching. Sizes are M - 2XL.

ITEM: BLACK JACKET Retail Price- \$75

E. CERAMIC LOGO MUG- Now even that day old "tar" that only slightly resembles coffee will taste better. Ok, maybe not, but you'll sure look good carrying your beverage around in this 15oz. black Benchmade mug. Features blue, wrap-around Benchmade logo. (Sorry, mug not pictured here. View on our website.)

ITEM: CERAMIC MUG BLK Retail Price- \$10

ITEM NUMBER BLAD DESC

MODEL 80

803 Plain

803S Comb

Specifications— 3.90
Weight: 4.10 oz.; 154
Modified locking-liner.

MODEL 80

804 Plain

804S Comb

804BT Plain

804SBT Comb

804HS M2

804HSSR M2

Specifications— 3.90
Weight: 4.10 oz.; 154
(60-62); Double, 6AL-

MODEL 81

813 Plain

813S Comb

Specifications— 3.16
Weight: 3.10 oz.; 154
Modified locking-liner.

MODEL 81

814 Plain

814S Comb

814BT Plain

814SBT Comb

814HS M2

814HSSR M2

814SBTRT Comb

Specifications— 3.22
Weight: 3.00 oz.; 154
(60-62 HRC); Double,

MODEL 82

821 Plain

821S Comb

Specifications— 3.5
Weight: 2.70 oz.; 154
back mechanism; Black

MODEL 82

824 Plain

824S Comb

824SBT Comb

Specifications— 2.92
Weight: 1.80 oz.; 154
with lock-back mech

MODEL 83

831 Plain

831S Comb

Specifications— 3.40
Weight: 2.70 oz.; 154
mechanism; Black 2XL

MODEL 83

834 Plain

834S Comb

834SBT Comb

Specifications— 3.50
Weight: 2.70 oz.; Clip
opener hole with lock

MODEL 85

850 Plain

850S Comb

Specifications— 2.80
Weight: 2.60 oz.; 154
with rainbow anodized

MODELS 85

855-05 Plain

855-06 Comb

855-07 Plain

855-08 Comb

856 Plain

856S Comb

Specifications— 2.80
Weight: 2.58 oz.; 154
with multicolor anodized
steel carry-clip.

2001 RETAIL PRICE LIST

ITEM NUMBER BLADE & HANDLE STYLE DESCRIPTION SUGGESTED RETAIL

MODEL 803 TSEK

803	Plain edge/satin finish blade, G-10 scales	\$105
803S	ComboEdge/satin finish blade, G-10 scales	\$105

Specifications— 3.90" Blade, Thickness: .125"; Overall length: 9.20"; Closed: 5.30"; Weight: 4.10 oz.; GIN-1 stainless steel blade (58-60HRC); Double, 410 stainless steel liners; Modified locking-liner; G-10 scales; Removable, black steel carry-clip.

MODEL 804 AFCK-II

804	Plain edge/satin finish blade, G-10 scales	\$120
804S	ComboEdge/satin finish blade, G-10 scales	\$120
804BT	Plain edge/BT2 coated blade, G-10 scales	\$130
804SBT	ComboEdge/BT2 coated blade, G-10 scales	\$130
804HS	M2 steel/plain edge/BT2 coated blade, G-10 scales	\$140
804HSS	M2 steel/ComboEdge/BT2 coated blade, G-10 scales	\$140

Specifications— 3.90" Blade, Thickness: .125"; Overall length: 9.20"; Closed: 5.30"; Weight: 4.10 oz.; 154CM stainless steel blade (59-61 HRC), or M2 high-speed steel blade (60-62); Double, 6AL-4V Titanium liners; G-10 scales; Removable, black steel carry-clip.

MODEL 813 MINI-TSEK

813	Plain edge/satin finish blade, G-10 scales	\$85
813S	ComboEdge/satin finish blade, G-10 scales	\$85

Specifications— 3.16" Blade, Thickness: .100"; Overall length: 7.56"; Closed: 4.40"; Weight: 3.10 oz.; GIN-1 stainless steel blade (58-60HRC); Double, 410 stainless steel liners; Modified locking-liner; G-10 scales; Removable, black steel carry-clip.

MODEL 814 MINI-AFCK-II

814	Plain edge/satin finish blade, G-10 scales	\$100
814S	ComboEdge/satin finish blade, G-10 scales	\$100
814BT	Plain edge/BT2 coated blade, G-10 scales	\$110
814SBT	ComboEdge/BT2 coated blade, G-10 scales	\$110
814HS	M2 steel/plain edge/BT2 coated blade, G-10 scales	\$120
814HSS	M2 steel/ComboEdge/BT2 coated blade, G-10 scales	\$120
814SBTRT	ComboEdge/BT2 coated blade, Realtree Hardwoods scales	\$120

Specifications— 3.25" Blade, Thickness: .100"; Overall length: 7.65"; Closed: 4.40"; Weight: 3.00 oz.; 154CM stainless steel blade (59-61 HRC), or M2 high-speed steel blade (60-62 HRC); Double, 410 stainless steel liners; G-10 scales; Removable, black steel carry-clip.

MODEL 821 MINI-ASCENT-II UTILITY

821	Plain edge/satin finish blade, black Zytel handle	\$50
821S	ComboEdge/satin finish blade, black Zytel handle	\$50

Specifications— 3.50" Blade, Thickness: .105"; Overall length: 6.75"; Closed: 4.00"; Weight: 2.70 oz.; GIN-1 stainless steel blade (59-61 HRC); Thumb-stud opener with lock-back mechanism; Black Zytel handle; Removable, black steel carry-clip.

MODEL 824 MINI-ASCENT-II

824	Plain edge/satin finish blade, black Zytel handle	\$55
824S	ComboEdge/satin finish blade, black Zytel handle	\$55
824SBT	ComboEdge/BT2 coated blade, black Zytel handle	\$65

Specifications— 2.90" Blade, Thickness: .105"; Overall length: 6.75"; Closed: 4.00"; Weight: 1.80 oz.; 154CM stainless steel blade (59-61 HRC); Ambidextrous oval-hole opener with lock-back mechanism; Black Zytel handle; Removable, black steel carry-clip.

MODEL 831 ASCENT-II UTILITY

831	Plain edge/satin finish blade, black Zytel handle	\$55
831S	ComboEdge/satin finish blade, black Zytel handle	\$55

Specifications— 3.40" Blade, Thickness: .118"; Overall length: 8.25"; Closed: 4.85"; Weight: 2.70 oz.; GIN-1 stainless steel blade (58-60HRC); Thumb-stud opener with lock-back mechanism; Black Zytel handle; Movable, black steel carry-clip.

MODEL 834 ASCENT-II

834	Plain edge/satin finish blade, black Zytel handle	\$65
834S	ComboEdge/satin finish blade, black Zytel handle	\$65
834SBT	ComboEdge/BT2 coated blade, black Zytel handle	\$75

Specifications— 3.50" Blade, Thickness: .115"; Overall length: 8.25"; Closed: 4.875"; Weight: 2.70 oz.; Clip-point ATS-34 stainless steel blade (59-61 HRC); Ambidextrous oval-opener hole with lock-back mechanism; Black Zytel handle; Movable, black steel carry-clip.

MODEL 850 (PARDUE)

850	Plain edge/satin finish blade, Titanium liners, Micarta scales	\$230
850S	ComboEdge/satin finish blade, Titanium liners, Micarta scales	\$230

Specifications— 2.80" Blade, Thickness: .100"; Overall length: 6.70"; Closed: 3.90"; Weight: 2.60 oz.; 154CM stainless steel blade hardened to (59-61 HRC); Thumb-stud opener with rainbow anodized Titanium lock-liner and bolsters. Ivory Micarta scales.

MODELS 855 & 856 (PARDUE)

855-05	Plain edge/satin finish blade, Titan, liners, blu/bk handle	\$110
855-06	ComboEdge/satin finish blade, Titan, liners, blu/bk handle	\$110
855-07	Plain edge/BT2 coated blade, Titan, liners, gld/bk handle	\$120
855-08	ComboEdge/BT2 coated blade, Titan, liners, gld/bk handle	\$120
856	Plain edge/satin finish blade, Titan, liners, black G-10 scales	\$100
856S	ComboEdge/satin finish blade, Titan, liners, blk G-10 scales	\$100

Specifications— 2.80" Blade, Thickness: .100"; Overall length: 6.70"; Closed: 3.90"; Weight: 2.56 oz.; 154CM stainless steel blade hardened to (59-61 HRC); Thumb-stud opener with multicolor anodized aluminum or black G-10 handle, Titanium lock-liner; Removable steel carry-clip.

ITEM NUMBER ITEM DESCRIPTION SUGGESTED RETAIL

MODEL 886 BLUE STAR (ELISHEWITZ)

886	Plain edge/satin finish blade, Titan, liners, black G-10 scales	\$115
886S	ComboEdge/satin finish blade, Titan, liners, blk G-10 scales	\$115
886BT	Plain edge/BT2 coated blade, Titan, liners, black G-10 scales	\$125
886SBT	ComboEdge/BT2 coated blade, Titan, liners, blk G-10 scales	\$125

Specifications— 3.25" Blade, Thickness: .100"; Overall length: 7.60"; Closed: 4.30"; Weight: 2.50 oz.; Spear-point style 154CM stainless steel blade hardened to (59-61 HRC); Dual thumb-studs with anodized Titanium locking-liner; Removable black steel carry-clip.

MODEL 905 MINI-STRYKER (ELISHEWITZ)

905	Plain edge/satin finish blade, G-10 scales	\$105
905S	ComboEdge/satin finish blade, G-10 scales	\$105
905BT	Plain edge/BT2 coated blade, G-10 scales	\$115
905SBT	ComboEdge/BT2 coated blade, G-10 scales	\$115

Specifications— 2.90" Blade, Thickness: .100"; Overall length: 7.10"; Closed: 4.10"; Weight: 2.70 oz.; 154CM stainless steel blade (59-61 HRC); Ambidextrous opener disk with double, Titanium locking-liners; G-10 scales; Removable black steel carry-clip.

MODEL 910 STRYKER (ELISHEWITZ)

910	Plain edge/satin finish blade, G-10 scales	\$125
910S	ComboEdge/satin finish blade, G-10 scales	\$125
910BT	Plain edge/BT2 coated blade, G-10 scales	\$135
910SBT	ComboEdge/BT2 coated blade, G-10 scales	\$135
910HS	M2 steel/plain edge/BT2 coated blade, G-10 scales	\$145
910HSS	M2 steel/ComboEdge/BT2 coated blade, G-10 scales	\$145

Specifications— 3.70" Blade, Thickness: .120"; Overall length: 8.25"; Closed: 4.68"; Weight: 3.80 oz.; 154CM stainless steel blade (59-61 HRC) or M2 high-speed steel (60-62 HRC); Ambidextrous opener disk with double, Titanium locking-liners; G-10 scales; Carry-clip.

MODEL 914 RESCUE STRYKER (ELISHEWITZ)

914FS	Full-serration edge/satin finish blade, G-10 scales	\$115
914FSBT	ComboEdge/BT2 coated blade, G-10 scales	\$125

Specifications— 3.56" Blade, Thickness: .120"; Overall length: 8.25"; Closed: 4.68"; Weight: 3.96 oz.; GIN-1 stainless steel blade (59-61 HRC); Ambidextrous opener disk with double, Titanium locking-liners; G-10 scales; Removable black steel carry-clip.

MODELS 940 & 942 (OSBORNE)

940	Plain edge/satin finish blade, AXIS lock, Green anodized scales	\$170
940S	ComboEdge/satin finish blade, AXIS lock, Green anodized scales	\$170
940BT	Plain edge/BT2 coated blade, AXIS lock, Green anodized scales	\$180
940SBT	ComboEdge/BT2 coated blade, AXIS lock, Green anodized scales	\$180
942	Plain edge/satin finish blade, AXIS lock, Black anodized scales	\$170
942S	ComboEdge/satin finish blade, AXIS lock, Black anodized scales	\$170
942BT	Plain edge/BT2 coated blade, AXIS lock, Black anodized scales	\$180
942SBT	ComboEdge/BT2 coated blade, AXIS lock, Black anodized scales	\$180

Specifications— 3.40" Blade, Thickness: .115"; Overall length: 7.87"; Closed: 4.47"; Weight: 2.90 oz.; 154CM stainless steel blade (59-61 HRC); Ambidextrous dual thumb-stud opener with double, 410 stainless steel liners; Color anodized aluminum handle scales with color anodized titanium back-spacers; Removable black steel carry-clip.

THE BLUE BOX- TOOL KIT

981084	Six-Lobe Screw bit driver (bit sizes 6-8, 10, 15), plastic case	\$15
--------	-----------------------------------------------------------------	------

Specifications— Molded, blue plastic case 2.75" Length; 1.875" Width; Thickness: .625"; Weight: 1.60 oz.; Removable, plastic carry-clip.

SOFT SHEATHS

981086	Small size (1.625" Width x 5.00" Depth), black	\$10
981087	Large size (2.00" Width x 5.25" Depth), black	\$10

Specifications— Both made of black 1680 denier poly-ballistic nylon; soft liners; edges finished with nylon; heavy stitch throughout; Velcro® closure with heavyweight poly webbing on backside for option of horizontal or vertical carry.

MILITEC-1® METAL CONDITIONER

981368	Militec-1, 1 oz. squeeze bottle	\$5.95
981369	Militec-1, The Sniper Pak (25 1 oz. squeeze bottles)	\$19.95
981370	Militec-1, 4 oz. squeeze bottle	\$14.95
981371	Militec-1, Stainless steel applicator needle	\$10.00

Specifications— A chemically-reacted synthetic-based hydrocarbon derivative metal conditioner liquid that protects metal with a constant synthetic-based impregnated molecular bond.

The following are registered trademarks of Benchmade Knife Company, Inc., Oregon City, Oregon USA: Benchmade, Ball Song, Butterfly Logo, BT2, ComboEdge. • The following are trademarks of the Benchmade Knife Company, Inc., Oregon City, Oregon USA: Axis, Ascent, AXIS, Dark Star, LifeSharp, Nitrovisor, Park Avenue, Pinnacle, Reflex, Stryker, TAC (Technically Advanced Cutlery), Held To A Higher Standard. • Note: We reserve the right to make design and/or material modifications without prior notice. • Benchmade products are manufactured under one or more of the following patents: Safety Lock for Automatic Folding Knife— U.S. Patent No. 5,822,866; Blade Lock Mechanism for Folding Knife (Modified Locking Liner)— U.S. Patent No. 5,755,035; Parker Knife With Lock (AKK Lock)— U.S. Patent No. 5,777,841; Folding Knife Design, Stryker Model— U.S. Patent No. 5,408,706; Knife Blade Design, Stryker Model— U.S. Patent No. 5,409,070; Folding Knife With Forward Handle Design, Model 886, 855— U.S. Patent No. 5,397,017; Grooved Knife Handle Design, Model 350, 355— U.S. Patent No. 5,397,020; Folding Knife Design, Ascent Model— U.S. Patent No. 5,385,173; Knife Design (Design, Ascent Model)— U.S. Patent No. 5,384,871; Periscope Blade For A Knife Design, Parake Model 220 Knife— U.S. Patent No. 5,426,132; Knife Blade Design, Model 140(143)— U.S. Patent No. 5,425,389; Knife Handle Design, Model 705— U.S. Patent No. 5,438,789. Other patents pending.

We are proud to be a charter member of AKTI. Get involved and help to protect your knife freedoms— JOIN AKTI TODAY!

1.877.752.8770 or www.akti.org



SPECIALTY

F. POLO SHIRT- Hit the town in style with a Benchmade polo shirt. This 3-button, full-cut, heavyweight 7oz. pique is rich black in color and sports the Benchmade logo embroidered on the left chest in metallic blue and silver stitching. Sizes are M - 2XL.
ITEM: POLO SHIRT BLK Retail Price- \$35



G. MOCK TURTLENECK- Be the envy of all your friends with this black, long-sleeved shirt. Its a heavyweight to last just like our knives. Benchmade is boldly screen printed in metallic blue down the left sleeve and our butterfly logo is screen printed on the left chest in blue and silver. Sizes are M - 2XL.
ITEM: MOCK TURTLENECK Retail Price- \$25



VISIT THE NEW! BENCHMADE WEBSITE

Check it out today! It's packed full of all the latest products and Benchmade information, plus some exciting new features. You can see all of the knife mechanisms we offer and how they function. There are also some helpful hints on selecting the Benchmade knife that is right for you. And **NEW!** for the first time you can purchase Benchmade knives on-line. You now have access to the complete line at your finger-tips. It's easy! The site also offers a Benchmade Forum so you can participate in our on-line forum with engaging dialogue by the many Benchmade users around the world. Or, feel free to e-mail us directly with any questions or comments you may have. *See you there!*

www.benchmade.com

THE BENCHMADE WARRANTY

LIMITED LIFETIME WARRANTY- Benchmade Knife Company, Inc. warrants to the original owner that the knife will be free from defects in materials and workmanship. Benchmade will, without charge, repair or replace, at our (Benchmade's) option, any knife returned for Warranty work and found to be defective by Benchmade. The knife must be shipped by owner, prepaid and insured, together with a description of the problem and must be accompanied by the original bill of sale, your charge or credit receipt or any satisfactory proof of the original date of purchase. Any automatic knife returned for Warranty service from outside of Oregon must also include a copy of the owner's police or military identification, or be returned through the authorized Benchmade dealer from whom the knife was originally purchased. **NO EXCEPTIONS WILL BE MADE.**

WHAT IS COVERED- This Warranty covers replacement parts and labor. **WHAT IS NOT COVERED-** This warranty does not cover normal wear, resharpening of the blade, damage caused by neglect, misuse or the failure to perform normal or necessary maintenance, or shipping costs for returned knives. **DISASSEMBLY OF THE KNIFE BY ANYONE OTHER THAN BENCHMADE'S OWN WARRANTY DEPARTMENT WILL VOID WARRANTY. SORRY, NO EXCEPTIONS WILL BE MADE.**

Please read the complete Warranty information and proper knife care instructions provided with each packaged knife.

MODEL FEATURE CODES

These codes appear after the Benchmade model specific numbers. They identify particular feature variations within each model. (For example: Model 140SBT is a Model 140 knife which features partially serrated ComboEdge and BT2 Teflon coating on the blade).

(NO CODE)	Plain edge/no blade coating
S	ComboEdge, partially serrated/no blade coating
BT	Plain edge/BT2 black color Teflon coated blade
SBT	ComboEdge, partially serrated/BT2 black Teflon coated blade
BC1	Plain edge/BC1 charcoal color Boron Carbide coated blade
SBC1	ComboEdge/BC1 charcoal color Boron Carbide coated blade
FS	Fully-serrated edge/no blade coating
FSBT	Fully-serrated edge/BT2 black color Teflon coated blade
HS	M2 steel, plain edge/BT2 black color Teflon coated blade
HSSR	M2 steel, ComboEdge/BT2 black color Teflon coated blade
SBTRT	ComboEdge/BT2 black color Teflon coated blade Realtree Hardwoods camo-patterned handle
GR	Plain edge/no blade coating, green color handle
SGR	ComboEdge/no blade coating, green color handle
GY	Plain edge/no blade coating, grey color handle
SGY	ComboEdge/no blade coating, grey color handle
A	Plain edge/anodized color handle
AS	ComboEdge/anodized color handle

Color index
 catalog is printed annually
www.benchmade.com for
 suggested retail (US dollars), a
 product specs subject to po

MODEL 42 BALI

ITEM NUMBER	BLADE & HAND DESCRIPTION
42	4" Bali-Song/pla
42S	4" Bali-Song/Co
42A	4" Bali-Song/pla
42AS	4" Bali-Song/Co

Specifications— 4.20" Blade, Thick
 Wehawk style 12C27 stainless steel
 grated Titanium latch

MODEL 100 R&

100	River&Rescue F
100S	River&Rescue F

Specifications— 3.275" Blade, Th
 Full tang blade; GIN-1 stainless ste
 Sheath: Weight: 2.40 oz.; Materi

MODEL 140 NIA

140BT	Fixed blade/pla
140SBT	Fixed blade/Corr
140HS	M2 steel/fixed b
140HSSR	M2 steel/fixed b

Specifications— 4.50" Blade, Thick
 Full tang blade; 154CM stainless st
 (60-62 HRC), Sculpted G-10 handle

MODEL 145 NIA

145BT	Fixed blade/pla
145SBT	Fixed blade/Corr
145HS	M2 steel/fixed b
145HSSR	M2 steel/fixed b
145SBTRT	154CM/ComboE

Specifications— 3.65" Blade, Thick
 Full tang blade; 154CM stainless st
 (60-62 HRC), Sculpted G-10 handle

MODEL 160 TET

160	Fixed blade/pla
160S	Fixed blade/Com
160BT	Fixed blade/pla
160SBT	Fixed blade/Com
160GR	Fixed blade/pla
160SGR	Fixed blade/Com
160GY	Fixed blade/pla
160SGY	Fixed blade/Com

Specifications— 2.00" Blade, Thick
 Full tang blade; GIN-1 stainless steel
 Sheath: Weight: 1.00 oz.; Materi

MODEL 330 (PAR

330	Plain edge/satin fi
330S	ComboEdge/satin fi

Specifications— 2.30" Blade, Thick
 Weight: 1.30 oz.; 154CM stainless st
 liners with 2/3 length G-10 scales

MODEL 335 BIG

335	Plain edge/satin fi
335S	ComboEdge/satin fi

Specifications— 2.30" Blade, Thick
 Weight: 1.68 oz.; 154CM stainless ste
 less steel liners/scales; Money-clip

MODEL 350 (PAR

350	Plain edge/satin fi
350S	ComboEdge/satin fi
350BT	Plain edge/BT2 coat
350SBT	ComboEdge/BT2 coat

Specifications— 2.95" Blade, Thick
 Weight: 2.00 oz.; 154CM stainless steel
 stainless steel locking-liner and removab

MODEL 450 PARK

450BC1	Plain edge/BC1 coat
--------	---------------------

Specifications— 2.68" Blade, Thick
 Weight: 1.50 oz.; 154CM stainless steel
 coated; Grey anodized aluminum handles

Color indicates **NEW!** product offerings for 2001. This catalog is printed annually so please periodically check our website at www.benchmade.com for current information. Prices shown are suggested retail (US dollars), actual purchase prices may vary. All pricing and product specs subject to possible change without prior notice.

ITEM NUMBER	BLADE & HANDLE STYLE DESCRIPTION	SUGGESTED RETAIL
-------------	----------------------------------	------------------

MODEL 42 BALI-SONG

42	4" Bali-Song/plain edge Weehawk blade, Titanium handles	\$170
42S	4" Bali-Song/ComboEdge Weehawk blade, Titanium handles	\$170
42A	4" Bali-Song/plain edge Weehawk blade, anodized Titanium	\$180
42AS	4" Bali-Song/ComboEdge Weehawk blade, anodized Titanium	\$180

Specifications— 4.20" Blade, Thickness: .125"; Overall length: 9.40"; Weight: 4.10 oz.; Weehawk style 12C27 stainless steel blade, Skeletonized 6AL-4V Titanium handles with integrated Titanium latch

MODEL 100 R&R (ELISHEWITZ)

100	River&Rescue Fixed blade/plain edge/sheath	\$80
100S	River&Rescue Fixed blade/ComboEdge/sheath	\$80

Specifications— 3.275" Blade, Thickness: .114"; Overall length: 7.50"; Weight: 4.00 oz.; Full tang blade; GIN-1 stainless steel (S8-60 HRC), Sculpted G-10 handle; Sheath: Weight: 2.40 oz.; Material: Kydex/thermal plastic

MODEL 140 NIMRAVUS (ELISHEWITZ)

140BT	Fixed blade/plain edge/BT2 coating, sheath	\$155
140SBT	Fixed blade/ComboEdge/BT2 coating, sheath	\$155
140HS	M2 steel/fixed blade/plain edge/BT2 coating, sheath	\$165
140HSSR	M2 steel/fixed blade/ComboEdge/BT2 coating, sheath	\$165

Specifications— 4.50" Blade, Thickness: .115"; Overall length: 9.40"; Weight: 6.20 oz.; Full tang blade; 154CM stainless steel model (59-61 HRC), M2 high-speed steel model (60-62 HRC), Sculpted G-10 handle; Sheath: Weight: 6.00 oz.; Material: Kydex/molded clip.

MODEL 145 NIMRAVUS CUB (ELISHEWITZ)

145BT	Fixed blade/plain edge/BT2 coating, sheath	\$140
145SBT	Fixed blade/ComboEdge/BT2 coating, sheath	\$140
145HS	M2 steel/fixed blade/plain edge/BT2 coating, sheath	\$150
145HSSR	M2 steel/fixed blade/ComboEdge/BT2 coating, sheath	\$150
145SBTRT	154CM/ComboEdge/BT2 coating, Realtree Hardwoods, sheath	\$140

Specifications— 3.65" Blade, Thickness: .115"; Overall length: 7.82"; Weight: 4.00 oz.; Full tang blade; 154CM stainless steel model (59-61 HRC), M2 high-speed steel model (60-62 HRC), Sculpted G-10 handle; Sheath: Weight: 3.80 oz.; Material: Kydex/molded clip.

MODEL 160 TETHER KNIFE (ELISHEWITZ)

160	Fixed blade/plain edge/black handle, sheath	\$80
160S	Fixed blade/ComboEdge/black handle, sheath	\$80
160BT	Fixed blade/plain edge/BT2 coating/black handle, sheath	\$90
160SBT	Fixed blade/ComboEdge/BT2 coating/black handle, sheath	\$90
160GR	Fixed blade/plain edge/green handle, sheath	\$80
160SGR	Fixed blade/ComboEdge/green handle, sheath	\$80
160GY	Fixed blade/plain edge/grey handle, sheath	\$80
160SGY	Fixed blade/ComboEdge/grey handle, sheath	\$80

Specifications— 2.00" Blade, Thickness: .125"; Overall length: 5.75"; Weight: 1.50 oz.; Full tang blade; GIN-1 stainless steel(S8-60HRC), Thermal plastic coated handle; Sheath: Weight: 1.00 oz.; Material: Kydex with 64" length beaded chain.

MODEL 330 (PARDUE)

330	Plain edge/satin finish blade, partial G-10 handle scales	\$100
330S	ComboEdge/satin finish blade, partial G-10 handle scales	\$100

Specifications— 2.30" Blade, Thickness: .070"; Overall length: 5.70"; Closed: 3.40"; Weight: 1.30 oz.; 154CM stainless steel blade hardened to (59-61 HRC), Double Titanium liners with 2/3 length G-10 scales.

MODEL 335 BIG SPENDER (PARDUE)

335	Plain edge/satin finish blade, stainless steel handle scales	\$70
335S	ComboEdge/satin finish blade, stainless steel handle scales	\$70

Specifications— 2.30" Blade, Thickness: .070"; Overall length: 5.70"; Closed: 3.40"; Weight: 1.68 oz.; 154CM stainless steel blade hardened to (59-61 HRC), Double 410 stainless steel liners/scales; Money-clip.

MODEL 350 (PARDUE)

350	Plain edge/satin finish blade, black Zytel handle	\$90
350S	ComboEdge/satin finish blade, black Zytel handle	\$90
350BT	Plain edge/BT2 coated blade, black Zytel handle	\$100
350SBT	ComboEdge/BT2 coated blade, black Zytel handle	\$100

Specifications— 2.95" Blade, Thickness: .088"; Overall length: 7.10"; Closed: 4.15"; Weight: 2.00 oz.; 154CM stainless steel blade hardened to (59-61 HRC), Zytel handles with stainless steel locking-liner and removable black steel carry-clip.

MODEL 450 PARK AVENUE (TERZUOLA)

450BC1	Plain edge/BC1 coated blade, anodized aluminum handle	\$120
--------	-------------------------------------------------------	-------

Specifications— 2.68" Blade, Thickness: .090"; Overall length: 6.00"; Closed: 3.33"; Weight: 1.50 oz.; 154CM stainless steel blade hardened to (59-61 HRC) Boron Carbide coated; Grey anodized aluminum handles; Stainless steel liner; Silver lapel hook with chain.

ITEM NUMBER	BLADE & HANDLE STYLE DESCRIPTION	SUGGESTED RETAIL
-------------	----------------------------------	------------------

MODEL 690 (ELISHEWITZ)

690	Plain edge/satin finish blade, Carbon Fiber/wood handle	\$170
690S	ComboEdge/satin finish blade, Carbon Fiber/wood handle	\$170
690BC1	Plain edge/BC1 coated blade, Carbon Fiber/wood handle	\$180
690SBC1	ComboEdge/BC1 coated blade, Carbon Fiber/wood handle	\$180

Specifications— 3.25" Blade, Thickness: .133"; Overall length: 7.50"; Closed: 4.12"; Weight: 3.00 oz.; 154CM stainless steel blade hardened to (59-61 HRC), Carbon Fiber/stabilized wood handles with anodized titanium locking-liner; Custom removable steel carry-clip.

MODEL 705 (MCHENRY & WILLIAMS)

705	Plain edge/satin finish blade, AXIS lock, G-10 scales	\$150
705S	ComboEdge/satin finish blade, AXIS lock, G-10 scales	\$150
705BT	Plain edge/BT2 coated blade, AXIS lock, G-10 scales	\$160
705SBT	ComboEdge/BT2 coated blade, AXIS lock, G-10 scales	\$160

Specifications— 2.95" Blade, Thickness: .100"; Overall length: 6.75"; Closed: 3.80"; Weight: 2.70 oz.; 154CM stainless steel blade hardened to (59-61 HRC), G-10 handle scales; AXIS lock with dual thumb-stud opener; Reversible, black steel carry-clip.

MODEL 710 (MCHENRY & WILLIAMS)

710	Plain edge/satin finish blade, AXIS lock, G-10 scales	\$170
710S	ComboEdge/satin finish blade, AXIS lock, G-10 scales	\$170
710BT	Plain edge/BT2 coated blade, AXIS lock, G-10 scales	\$180
710SBT	ComboEdge/BT2 coated blade, AXIS lock, G-10 scales	\$180
710HS	M2 steel/plain edge/BT2 coated blade, AXIS lock, G-10 scs	\$190
710HSSR	M2 steel/ComboEdge/BT2 coated blade, AXIS lock, G-10 scs	\$190

Specifications— 3.90" Blade, Thickness: .115"; Overall length: 8.80"; Closed: 4.90"; Weight: 4.50 oz.; 154CM stainless steel blade hardened to (59-61 HRC), M2 high-speed steel model (60-62HRC), G-10 handle scales; AXIS lock with dual thumb-stud openers; Reversible, black steel carry-clip.

MODELS 720 & 721 (PARDUE)

720	Plain edge/satin finish Bowie blade, AXIS lock, alum. handle	\$170
720S	ComboEdge/satin finish Bowie blade, AXIS lock, alum. handle	\$170
720BT	Plain edge/BT2 coated Bowie blade, AXIS lock, alum. handle	\$180
720SBT	ComboEdge/BT2 coated Bowie blade, AXIS lock, alum. handle	\$180
720SBTRT	ComboEdge/BT2 coated Bowie blade, Realtree Hardwoods handle	\$180
721	Plain edge/satin finish Bowie blade, AXIS lock, G-10 handle	\$170
721S	ComboEdge/satin finish Bowie blade, AXIS lock, G-10 handle	\$170
721BT	Plain edge/BT2 coated Bowie blade, AXIS lock, G-10 handle	\$180
721SBT	ComboEdge/BT2 coated Bowie blade, AXIS lock, G-10 handle	\$180

Specifications— 3.25" Blade, Thickness: .115"; Overall length: 7.62"; Closed: 4.37"; Weight: 4.30 oz.; aluminum, or 3.82 oz. G-10; 154CM stainless steel Bowie blade hardened to (59-61 HRC), Black anodized handle; AXIS lock with dual thumb-stud opener; Movable, black steel carry-clip.

MODEL 722 (PARDUE)

722	Plain edge/satin finish Tanto blade, AXIS lock, G-10 handle	\$170
722S	ComboEdge/satin finish Tanto blade, AXIS lock, G-10 handle	\$170
722BT	Plain edge/BT2 coated Tanto blade, AXIS lock, G-10 handle	\$180
722SBT	ComboEdge/BT2 coated Tanto blade, AXIS lock, G-10 handle	\$180

Specifications— 3.25" Blade, Thickness: .115"; Overall length: 7.62"; Closed: 4.37"; Weight: 4.00 oz.; 154CM stainless steel Tanto blade hardened to (59-61 HRC), Black G-10 handle; AXIS lock with dual thumb-stud opener; Movable, black steel carry-clip.

MODEL 730 & 735 ARES (ELISHEWITZ)

730	Plain edge/satin finish blade, AXIS lock, Burg/blk G-10 scales	\$170
730S	ComboEdge/satin finish blade, AXIS lock, Burgundy/blk G-10	\$170
730BT	Plain edge/BT2 coated blade, AXIS lock, Burg/blk G-10 scales	\$180
730SBT	ComboEdge/BT2 coated blade, AXIS lock, Burgundy/blk G-10	\$180
735	Plain edge/satin finish blade, AXIS lock, Green/blk G-10 scales	\$170
735S	ComboEdge/satin finish blade, AXIS lock, Green/black G-10	\$170
735BT	Plain edge/BT2 coated blade, AXIS lock, Green/blk G-10 scales	\$180
735SBT	ComboEdge/BT2 coated blade, AXIS lock, Green/black G-10	\$180

Specifications— 3.60" Blade, Thickness: .114"; Overall length: 8.20"; Closed: 4.70"; Weight: 4.40 oz.; 154CM stainless steel blade hardened to (59-61 HRC), Colored G-10 handle scales; AXIS lock with dual thumb-stud opener; Movable, black steel carry-clip.

MODEL 750 PINNACLE

750	Plain edge/satin finish blade, Mono-Lock, Titanium handle	\$150
750S	ComboEdge/satin finish blade, Mono-Lock, Titanium handle	\$150
750BT	Plain edge/BT2 coated blade, Mono-Lock, Titanium handle	\$160
750SBT	ComboEdge/BT2 coated blade, Mono-Lock, Titanium handle	\$160

Specifications— 3.60" Blade, Thickness: .115"; Overall length: 8.35"; Closed: 4.75"; Weight: 4.40 oz.; 154CM stainless steel blade hardened to (59-61 HRC), Mono-Lock with Titanium handle; Removable, black steel carry-clip.

MODEL 770 (OSBORNE)

770	Plain edge/satin finish blade, AXIS lock, Carbon Fiber handle	\$170
770S	ComboEdge/satin finish blade, AXIS lock, Carbon Fiber handle	\$170
770BC1	Plain edge/BC1 coated blade, AXIS lock, Carbon Fiber handle	\$180
770SBC1	ComboEdge/BC1 coated blade, AXIS lock, Carbon Fiber handle	\$180

Specifications— 2.80" Blade, Thickness: .114"; Overall length: 6.50"; Closed: 3.75"; Weight: 1.80 oz.; 154CM stainless steel blade hardened to (59-61 HRC), Black Carbon Fiber handles; AXIS lock with dual thumb-stud opener; Custom removable steel carry-clip.



BENCHMADE KNIFE COMPANY, INC
300 Beaver Creek Road
Oregon City, Oregon 97045 USA

PHONE
1.800.800.7427
503.655.6004

FAX
503.655.6223
503.655.7922

E•MAIL
info@benchmade.com

WEBSITE
www.benchmade.com

©2001 Benchmade Knife Co, Inc • Printed in USA

BENCHMADE®

300 BEAVERCREEK ROAD
OREGON CITY, OR 97045

BULK RATE
US POSTAGE
PAID
PERMIT NO. 25
OREGON CITY, OR

